

Friends

at Broomfield Hospital

HANDBOOK

FREE



Registered charity no. 260377

"We believe we are privileged to be allowed into your home to look after you and all your needs, enabling you to retain your independence for as long as you wish."



Live-in Care Specialist



*Wherever you are
on life's journey...
we are here to
support you.*

- Care packages to suit you – **24 hour live-in, hourly and night care**
- Continuity of carer
- Carers who arrive at the specified time
- Carers who stay for the allocated time
- Professional, friendly and fully trained staff
- A unique personal service centred around you
- Care delivered with dignity and respect
- Highest standards of care
- Respite and specialist care available including learning disabilities and dementia
- Regular reviews and re-assessments

To find out how we can assist you or someone you care about, to receive your **FREE** brochure or arrange a **FREE** no obligation assessment, please call our friendly staff on:

01371 811873



www.caring4u.co.uk Email: info@caring4u.co.uk

25 The Bardfield Centre, Great Bardfield, Braintree, Essex CM7 4SL
Fax: 08702 245799

Personal elderly alert Promoting independent living!

as heard on BBC Radio & Heart FM

We all lead busy lives, and we all want to make sure that our loved ones have constant contact to make sure that they are alright.

A survey by the campaign to end loneliness found that 42% of older people reported that if they need help, they do not know where to turn.

Do you worry someone you love is okay but living alone?

Comfort Care calls was designed to provide a solution. It gives you peace of mind by making a daily call to your loved one and sending you an immediate text message if assistance is required or if the phone call(s) aren't answered during the day.

Try our service FREE for two weeks. If you wish to continue, it's only £19.99 per month. Nothing else to pay, and you can stop & start the service to suit your requirements.

www.comfortcarecalls.co.uk

Call Tamsin now on **01799 610 000** to arrange your **FREE** trial!



Comfort Care Calls 4U

A daily call to your loved one, peace of mind for you

Contents

- | | |
|--|--|
| 03 Chairman's Welcome | 29 Our Free Library Trolley Service |
| 05 Welcome from Sheila
Salmon Trust Chairman | 31 Videoflourescopy Chair |
| 07 Mid Essex Hospitals Charities
Support Officer | 33 Bladder Scanner |
| 09 Our Shops | 34 Internal Zones Map |
| 13 A word from our Treasurer | 37 Multi Faith Centre |
| 15 Donations for 2013 | 39 Friends at Christmas |
| 19 New equipment for the
eye clinic | 43 Friends2 Shop |
| 21 Dementia Project | 45 Can you help us? |
| 23 How We Help | 47 Our Wonderful Volunteers |
| 25 Remembering a Loved One | 49 History of Broomfield Hospital |
| 27 Donation Form | 53 A Friends Get Together |
| | 55 Verifit Paediatric Equipment |
| | 57 Hospital Information |
| | 61 Community Action |



Scan this code to view our magazine online or visit:
www.chelmsford.smilepublishing.com

Make your voice heard



With your voice,
we can help shape
your local NHS and
social care services.

Let us know your views and experiences, whether
it's about GPs and hospitals, mental health or
disability services, or care for the young and frail.

www.healthwatchesessex.org.uk • 01376 572829



/healthwatchesessex



@HWEssex

healthwatch
Essex

Healthwatch Essex is a company limited by guarantee and registered in England No. 03000591011.

**Bouygues Energies & Services
FM Is the Facilities Management
provider for Broomfield Hospital
in Chelmsford.**

We employ engineers, electricians,
plumbers and helpdesk staff at
the hospital. For more information
on careers within the company
visit: www.bouygues-es.co.uk



Bouygues
Energies &
Services FM



Our energies for a Better Life

Chairman's Welcome

Good healthcare in hospital is something we all want for our loved ones and ourselves. When that care can be backed up and strengthened by volunteers dedicated to helping patients and their families, then it can be second to none.

Broomfield Hospital's staff always aim to give a high level of expertise and empathy and their good work is given an extra dimension by the Friends at Broomfield Hospital, a group of people who fundraise to provide extra equipment and facilities at the hospital to help patients and their families.

I am proud to be the Chairman of the Friends and I am delighted that the money raised by our volunteers is making such a difference across many wards and departments at Broomfield Hospital.

The vast amount of medical equipment, the extra comforts for patients, visitors and staff and the ongoing support provided by the Friends is of such enormous value.

Over the years the equipment purchased has often been cutting edge and has helped many services develop when budgets were severely curtailed. We are able to help when needed and that is what we are here for, to support Broomfield Hospital, for the benefit of patients, visitors and staff.



Our volunteers run and staff our two shops at the hospital, take the trolleys around the wards, including the library trolley and present a friendly face to patients, staff and visitors.

The time and effort given on a daily basis is as vital now as it was 60 years ago when the group was first set up as the hospitals League of Friends. So, I would like to thank all of our volunteers, the staff at Broomfield Hospital and all those who support the Friends, for working together to make such a positive impact.

For more information about our work please visit our website **www.fabh.org**

Alison Douglas
Chairman - Friends at Broomfield Hospital

**Your peace of mind
is important to us**

ASSURED

RE-INVIGORATING

TECHNOLOGICAL



Specialist Cleaning

G R O U P

**INTENSIVE
SOLUTIONS**

POSITIVE

QUALITY

REMARKABLE



0800 458 6452

www.ckgroupservices.com

Creating Cleaner, Safer Environments

Welcome

Welcome from the Chairman of Mid Essex Hospitals



It is a big privilege for me to be given the opportunity to contribute to the Friends magazine.

I was appointed as the Trust Chairman at Mid Essex Hospitals back in 2010 and it soon became apparent to me what an enormous contribution the volunteers from the Friends make to Broomfield Hospital. On numerous occasions I have had the pleasure of being able to thank them for the commitment that they give to the Hospital.

The volunteers give so generously of their time, and support the Trust in so many ways. The Hospital shops are a focal point for many patients, staff and visitors. It is manned entirely by volunteers who work in a very professional manner to provide a first class service. Those patients who are

unable to leave the wards are not forgotten as they can benefit from the shop trolley or library service run by the volunteers.

The Friends provide financial support and practical help to the Hospital. Most recently, this has included making generous donations to many services including ophthalmology, audiology and the stroke service. These pieces of equipment will make a big difference to our patients and we are very grateful for the Friends help. The Friends also provide funding and support for the dementia project, patient experience team and the chaplaincy service working alongside our staff to improve the experience for our patients, carers, and visitors.

Once again, on behalf of the Trust, I would like to reiterate how much we appreciate the help and support the Friends give us and look forward to continuing our good working relationship for years to come. This is a wonderful example of local people helping their local health service.

Professor Sheila Salmon
Trust Chairman



INTERNATIONAL FINANCIAL DATA SERVICES



International Financial Data Services is recognised as the world's leading provider of investor record keeping services and technology solutions. The company is one of the fastest growing financial servicing organisations in the UK.

Our services are provided to a wide range of global investment managers, wealth managers, financial advisers and distributors of financial and investment products. IFDS has successfully grown to service 60% of UK fund investments in both the retail and institutional sectors within 15 years. We provide services for 61 organisations in the UK with over 9.6 million investor accounts. As a global company, IFDS supports over 30 million investor accounts for over 350 organisations. We stand behind some of the biggest brands in the financial services industry.

Telephone: +44 (0)870 887 2222

IFDS House, St Nicholas Lane, Basildon, Essex, SS15 5FS, UK

www.ifdsgroup.com



JOIN A PROGRAMME

Don't let your disability be a barrier to a full and happy life, take a positive step and join an ecdp programme today.

- Skills Match • Peer Mentoring
- West Essex Peer Navigator Programme
- ecdp Works • Access Specialists Programme

Get involved with one of ecdp's programmes today

SKILLS MATCH

Everyone has a skill. What's yours? Skills Match is a programme run by ecdp that supports disabled or older people to reconnect with their community by sharing a skill. Pass on your skills, improve your confidence and reconnect with your community today. Contact rvipond@ecdp.co.uk ; 0124534212

ACCESS TO WORK

Would you like some support claiming or using Access to Work to support you in your job? Our Access Specialists are here to help. An Access Specialist is an experienced user of Access to Work who can advise you on how to claim it and use it. Contact Cindy: cpeacock@ecdp.co.uk ; 0124534319

VOLUNTEER WITH US

Could you support someone with a disability to achieve their life goals? Could you represent ecdp and help recruit other volunteers? Whether you've got a little time or a lot, you could make a difference and we'd love to hear from you. Contact: insight@ecdp.co.uk , 0124534310

To find out more about everything else we do: www.ecdp.org.uk



ROBIN STEER

"Seeing people achieve their goals, when they thought they couldn't, gives a warm feeling you can't get anywhere else..."



Follow us
on Twitter:
[@ecdp](https://twitter.com/ecdp)
and Like us
on Facebook

Mid Essex Hospitals Charities Support Officer

The Friends of Broomfield Hospital, known simply as "The Friends" provides a wealth of extra amenities for the benefit of patients, visitors and staff and purchases medical equipment over and above what is normally provided by government funds.

The Friends also enhance the patient experience through their volunteering services and have made significant contributions to a number of major projects such as the "Dementia" Project and the Patients Handbook. Other new equipment provided by the Friends includes a new television for the patient waiting area, an ECG machine and adapted cutlery for the "mealtime mission" initiative.

In the early days of the National Health Service, it was clear that all patient needs

could not be provided by the Welfare State and what used to be called the League of Friends was formed to provide what was missing. The modern League of Friends began in 1949 with a new National Association of Friends. The Minister for Health at the time, Aneurin Bevan welcomed the personal, voluntary efforts of caring individuals to support the work of the health service launched in the same year.

The extraordinary and important work of the Friends is just as important today and Mid Essex Hospitals Trust is immensely grateful to our major supporter, the Friends at Broomfield Hospital for their commitment, generosity and continued support.

Yvonne Carter - Charities Support Officer



A SMART SWEEP

Be smart, be safe. A cleaner chimney is a safer chimney

UK fire statistics show that every year over 30,000 houses have chimney fires. This is due largely to infrequent sweeping, which results in a build up of flammable tar within the appliance or flue. So it is advisable to arrange a chimney sweep every year. **It's never too early to get your chimney swept, but by leaving it, a chimney fire will be too late.**



Log Burners/AGA, Rayburns Gas Fires,
Open Fires, All Chimneys Liners Swept.

Call David now - 07944 698683

Landline - 01245 355540

david.mcgrath3@sky.com

www.asmartswEEP.co.uk

Licence to Sweep!



How are YOUR finances stacking up?

One in three people entitled to help with their rent
and Council Tax don't claim it.

With our new online calculator and application form, you can find out how much help you could receive in minutes!

Visit the Housing & Benefits section at **www.chelmsford.gov.uk**

or call us on: 01245 606400

To speak to one of our friendly advisors



Chelmsford
City Council

Our Shops

Two shops are run on the Broomfield Hospital site by volunteers from the Friends.

The bright and eye-catching Friends2 Shop is located in the busy new atrium at the main entrance to the hospital and the other shop, Friends1, is in an established location near the entrance to the South Wing.

Both shops give superb service with a smile, brightening up each day for customers. Volunteers with the Friends all believe in going the extra mile and there is many a tale of them giving help above and beyond the call of duty.

The goods on sale include sandwiches, newspapers and magazines, soft drinks, greeting cards and confectionary. Hot soup has also been added recently to the list.



Lyons Court Residential Care Home

Located in North Springfield, our dedicated team is committed to providing the highest standards of residential and respite care in a warm and welcoming environment.



For more information please speak to a member of our team on: 01245 451254
Canvey Walk, North Springfield,
Chelmsford CM1 6LB

Sanctuary Care Limited is a subsidiary of Sanctuary Housing Association, an exempt charity



Birthlight baby nurture



Baby and Toddler swimming
Baby Massage and Gentle Movement
Classes in Chelmsford

Liz Raffell
babynurture.co.uk
liz@babynurture.co.uk
Tel: 07835 029182

MHA



We are an independent housing association offering retirement living in a peaceful and secure environment

Maldon Housing Association is a small local almshouse charity governed by a voluntary board of trustees who come from a wide range of professional backgrounds.

The day-to-day running of the Association is delegated to housing support and administrative staff.

The Association provides retirement accommodation at an affordable monthly cost, for people aged 60 or over who are able to live independently, offering a peaceful and secure environment in which to make their home.

SHELTERED HOUSING FOR OLDER PEOPLE

Phone 01621 840247

Email admin@maldonha.co.uk • www.maldonha.co.uk
Twitter @Maldonha

A professional Will Service in your home

5 facts everyone should know...

- 1 Your family can end up losing a large amount of their inheritance if you haven't planned ahead.
- 2 Your children could be taken into care if you don't specify who you would like to take care of them. They won't automatically be placed with a member of your family.
- 3 If you are living together it's important to know that unless you have a valid Will in place your life partner does not have the automatic right of a spouse.
- 4 If you have remarried, the children of your first marriage could be left with nothing if you die before your new partner.
- 5 Unless you've got a legal document in place - a Lasting Power of attorney, your family will have to apply for authority from a Court to make decisions on your behalf if you are incapacitated for any reason - whether that's from an accident or illness. This can take months and can be very expensive.

Having a valid Will in place allows you to provide for and protect your loved ones. It makes the administration of your estate easier to deal with and enables you to minimise your tax liabilities.

Find out more on
www.sovereignestateplanning.co.uk
or call Sue Mallett on
01245 460 383

SOVEREIGN
ESTATE PLANNING



Up to 15% off for you, your family & friends.

Terms & conditions apply
Call for details.

Our shops

Continued



Sheila Salmon, Chairman of Mid Essex Hospitals Trust is pictured cutting the ribbon at the re-opening of shop 1 run by the Friends. Also pictured are volunteers Jenny Gillingham, Peggy Cook and Barbara Coupe.

Shop 1 run by volunteers at the heart of Broomfield Hospital has been transformed



with a major re-vamp, bringing an even better service to patients, visitors and staff. The refurbishment of the shop, will bring a boost to the money raised in the shop, which the Friends donate to the hospital for medical equipment and other facilities.

Jenny Gillingham and Barbara Coupe, long-standing volunteers with the Friends and joint managers of the shop are delighted with its new look and improved set up.

"We have more shop space and a better layout for fittings. Everything looks brighter and better after being painted and decorated" said Jenny. "We are very proud of the shop and know that our customers feel even more welcome with the improved surroundings".

The shop, at the South entrance to the hospital, sells a wide range of goods including sandwiches, fresh fruit, yoghurts, hot drinks, newspapers and magazines, greeting cards, confectionary and some toiletries. It is one of the two shops run on the Broomfield Hospital site by the Friends group.

It is open throughout the week, manned by volunteers and the shop is also a focal point for volunteers from the Friends who take stocked-up trolleys around the wards so patients can buy items they need".

Hop **ON BOARD** *today!*

**WE'VE IMPROVED YOUR LOCAL
SERVICE 42 FREQUENCY TO
MAKE IT EASIER TO HOP ON THE
BUS TO THE HOSPITAL.**

**SERVICE
42**



**EVERY
10
MINUTES**

With new links between the city centre and Broomfield hospital, and a better service connecting you with Chelmsford train station, they'll be a **SERVICE 42** along when you need one.

Travelling from north Essex? Then
why not try our **SERVICE 70**
every 20 minutes from Colchester,
Braintree and Chelmsford.

For more details about tickets and
times go online **firstgroup.com/essex**
For Customer Services **08456 020 121**.

For timetable enquiries
call Traveline on **0871 200 22 33**.



For fast and frequent
access,
SCAN ME!

GET ON BOARD WITH **First** 

A word from our Treasurer



Broomfield Hospital has had the benefit of a Friends group for the past 60 years and Allan Hodson, treasurer for Friends at Broomfield Hospital, says that over that time around £1 million has been donated by the volunteers.

Allan, who can be seen on a regular basis wheeling the retail trolley around the wards said : "In the early days the

donations were of course much less than they are today, but they still made a big difference."

A former banker, Allan became a volunteer with the Friends at Broomfield Hospital when he retired.

He said: "About six months after I retired I found I could not accept the lack of contact with the public. One day I was in the hospital shop and saw an invitation to join the Friends group. I decided to volunteer for the trolley rounds, as this would give me some exercise.

"My role as treasurer is to keep the books and pay all the administration bills, plus draw the cheques to purchase equipment for the hospital which has been agreed by the committee, to bank all donations and profit from the shops and trolley rounds plus investing the funds to obtain maximum interest without risk.

"I enjoy being a volunteer on the trolley round as it gives me a chance to help the patients to buy items they need, often at a time when no relatives or friends are available. By having a few words with the patients I can perhaps bring a little pleasure into their day."

Allan Hodson

Willowmead Care Home



Willowmead Care Home is a 60 bedded Residential and Residential Dementia Care home and is situated in a very rural location with extensive countryside views. The village is approximately 1.5/2 miles away, the nearest bus stop is about 1/1.5 miles away and the train station is 2 miles away. The care that we offer is of a consistently high standard, ensuring that you retain your individuality, dignity and respect at all

times. Residents can enjoy a large garden to the rear and side of the home which has been enhanced this year with the addition of a sensory garden. The garden is wheelchair accessible and you can go out and sit in one of the various seating areas or simply just enjoy the fresh air. There is ample parking available for visitors at the front of the home.



The home aims to provide a good quality of life for all who live here, enabling each resident to live with peace of mind knowing an experienced member of staff is always nearby. At Willowmead you will get to know all the staff as friends. We will identify a particular person who will be able to help you with personal things you need, such as bathing, shopping, writing letters and helping you to mix with other residents. The term we use to describe this person is a 'Key Worker'.

Accommodation:

You can make the room your own by bringing pieces of furniture and other belongings with you. You can have a key to your room. There is also a bedside locker with a lockable drawer for you to keep small valuables in. Staff and visitors will not enter your room unless invited by you. Your room is your personal space. You may use it as you choose. Domestic staff will negotiate with you a convenient time to clean your room. However, it has to be recognised that some people have a legal right to inspect any part of a residential care home. Our home also has some double rooms for married couples or if preferred rooms next to each other can be allocated.

Meals:

Residents have a choice from the daily menu and if a resident is not happy with the options then an alternative can be provided. Likes and dislikes about food can be raised at residents' meetings and discussed with you on admission. We have very experienced cooks who can provide special diets. Every effort will be made to meet your medical and cultural needs. We also try to be as flexible as possible for all meals. Arrangements can be made if you want to go out and are unable to return in time for a meal. You can choose to miss a meal or request a snack at another time.

Activities:

The activities organiser arranges regular outings and activities in which you can take part such as theatre and public house visits. We have a Knitting Circle, a flower arranging circle and a church visit provides regular services. We also arrange regular entertainment and fundraising events. Your suggestions are always welcome.

Services:

We provide individual personal care that you need, including a laundry service and social activities and are able to arrange hairdressing facilities, chiropody, dental care, eye care and hearing tests.

Willowmead Care Home
Wickham Bishops Road
Hatfield Peverel, Essex CM3 2JL

Email: managerw@goldcarehomes.com
Web: www.goldcarehomes.com
Manager: Kim Hirst

Tel: 01245 381787
Fax: 01245 382356

Donations in 2013

Mid Essex Hospital Services
NHS Trust



Dementia Project



Verifit Paediatric Equipment



Bladder Scanner – Day Ward



Digital piano for Chaplaincy Service



New equipment for the eye clinic



Speech and Language team

Fundraising in 2013



Open Garden



GO British final cheque



CHELMSFORD'S PREMIER FLOOR STORE!

10%
DISCOUNT
QUOTE
'THE VOLUNTEER'

CARPETS • VINYL • LAMINATE • SOLID WOOD

UP TO 50% OFF

SALE ON ALL FLOORING

CALL NOW
FOR A FREE
ESTIMATE AND
SEE HOW MUCH
YOU CAN
SAVE
TODAY!

FITTING CAN BE ARRANGED BY OUR TEAM OF EXPERT FITTERS

SOLID WOOD from £22.99m²

LAMINATE from £4.99m²

CARPETS from £4.99m²

VINYL from £5.99m²

SHOWROOM: 76-80 Baddow Rd,
Chelmsford CM2 7PJ
info@citycarpetsltd.co.uk



WE UPLIFT YOUR
OLD FLOORING & MOVE
YOUR FURNITURE!

OPENING TIMES
MON - SAT 9am - 5.30pm
SUN 10am - 3pm

CALL 01245 354599 OR 07920 002604 (24 hours)

POhWER

advocacy, making your voice heard

POhWER Essex

POhWER has been working
in Essex since 2003.

Our services in Essex

- NHS complaints advocacy
- NHS complaints advocacy toolkit

Get involved in POhWER Essex

- Volunteering
- Fundraising
- Membership of POhWER

Contact us

Telephone

0300 456 2370 (charged at local rate)

Minicom

0300 456 2364

Text

Send the word
'pohwer' with
your name and
number to 81025

Email

pohwer@pohwer.net

Skype

[pohwer.advocacy](https://www.skype.com/en/contacts/pohwer/advocacy)

8am to 6pm

Monday to Friday

Fax 0300 456 2365

Post PO Box 14043, Birmingham, B6 9BL



Donations in 2013 and 2012

EQUIPMENT DONATIONS - 2013

Toiletries – Stroke Ward	£41
Bladder Scanner – Day Ward	£3,558
Build small private rooms – Let's Face It Clinic	£5,000
Fluoroscopy Swallow Chair – Day Ward	£7,689
Verifit Paediatric Equipment – Day Ward	£1,576
Cornea Microscope – Eye Clinic	£17,500
Patient Information Packs – All Wards	£3,500
Toiletry Bags – All patients in need	£3,500
Christmas tree, decorations and patients gifts	£1,800
Chemotherapy Unit	£5,000
	£49,174

EQUIPMENT DONATIONS - 2012

Laser Equipment – Eye Clinic	£15,000
Monitors – Childrens Ward	£6,900
Coloured Crockery – Mealtime Mission	£6,000
Build Separate Rooms – Colposcopy Unit	£5,000
Overnight beds for parents - Children's Ward	£3,000
Monitors – Children's Ward	£3,000
Christmas tree, decorations and patients gifts	£1,320
Monitor – GUM Clinic bus station	£465
Coloured Plates for Wards B15 & B16	£243
Toiletries for patients – Stroke Ward	£40
ECG Monitor – Lister Ward	£4,750
Video care kit – Phoenix Ward	£260
	£47,774

Gemstone Pools Ltd.

Gemstone pools is a purpose built pool which offers various activities from lessons, pool parties and fitness classes and is also the home of Aquagem

**Rough Hill Farm Complex, The Tye
East Hanningfield, Essex CM2 8BY**



AQUAGEM

Aquagem is a professional swimming school specialising in classes for small babies up to toddlers. All instructors are highly trained in using the Birthlight method, which allows children to develop motor skills and confidence through play which then naturally develops into swimming skills.



Please contact Gemma Sinclair
gemsinclair@hotmail.com
www.aquagem-swimming.co.uk
07961 823581



Please...

return all equipment

(crutches, wheelchairs, etc)

when you have finished

with them

Thank you



Little Rangers Nursery & The Rangers Kids Club

07720 860114 – 01245 790166
info@littlerangersnursery.co.uk

The 'Home from Home' Nursery

Little Rangers Nursery offers Ofsted Registered Full Day & Sessional nursery places for children from 6 months to 5 years old.

Our nursery is based on allowing children the freedom to learn through play whilst feeling safe, happy & confident.

With different rooms to stimulate their minds
Messy Room - Soft Play - Sensory Room - Role Play - Quite Area
Baby Room - Toddler Room - Sleep Room

The Rangers Kids Club

Offering a free play environment for school age children.
Snack, drinks & a light tea included

With up to date activities, equipment & toys that children can freely access: iPads & Tablets - Art & Crafts - TV & Gaming - Soft Play - Internet - Board Games - Reading/Homework Area - Dolls, Cars & lots of Toys

Open:
7:00am - 6:00pm
Monday - Friday
Nursery Full Day
from £25.00

Nursery Sessions
from £8.50

Breakfast Club
£3.00

After School Club
£6.50

Holiday Club
Full Day - £15.00

**The Street
Hatfield Peverel
Essex
CM3 2EA**

www.littlerangersnursery.co.uk

New equipment for the eye clinic thanks to the Friends at Broomfield



For many of our elderly patients this was just not possible and often meant they were unable to have treatment, leaving them blind and in a lot of eye pain. Thanks to the generous support from the Friends, we can now carry out these complex procedures here at the hospital, which means a better outcome for

Volunteers from the Friends at Broomfield were invited to the eye clinic to see the difference their recent donation is making to the care and treatment provided to patients.

The Friends helped fund an advanced Specular Microscope recently and several other corneal instruments before, which enable Consultant Ophthalmologist, Mr Dimitris Pimenides to accurately assess the front of the eye (cornea) of routine or transplanted patients.

Mr Pimenides explained why the new equipment is so important, saying "previously, local patients would have to travel out of the area for both this procedure and corneal transplantation.

many more of our patients."

Being able to provide this specialist treatment meant that the corneal clinic has become a regional centre, and now sees patients from Harlow and Colchester and sometimes as far afield as Bury St Edmunds, covering a population of 1 million patients. Over 100 corneal transplant procedures have now been performed locally.

Mr Pimenides continued "It is extremely important that we provide the specialist care our patients need in a setting local to them, and I can't begin to express my gratitude to the Friends for their support and for making it possible to provide the specialist treatment our patients need."

Can we help you?

You could be eligible for our assistance if you have served, are currently serving in the Armed Forces or are a dependant of someone who has served.

If you think the Legion could help you or someone you know please contact us on:
08457 725 725 or e-mail:
eastanglia@britishlegion.org.uk

Registered Charity No: 219279

POPPY SUPPORT
 For Service people past and present and their families

Mattresses, Bed Frames, Divans and more...

Mattressman.co.uk

24HR
 FREE NEXT DAY DELIVERY*

INTERNET PRICES IN STORE!

* Orders above £45 qualify for **Free Next Working Day Delivery** made before 4pm Monday to Thursday. Call us on: **0844 318 44 44**

At: 70 Springfield Road, Town Centre Chelmsford CM2 6JY (inside Iceland)

ARE YOU CONCERNED?

Do you know an adult who is being treated badly, taken advantage of, or injured?
If so, call the ASK SaL Helpline
08452 66 66 63

Who is a vulnerable adult?
 Someone in need of help because of a disability, illness or age and is unable to take care of themselves or stop someone else from harming or exploiting them.

ask saL

Keeping adults safe across Essex
www.asksal.org.uk

Dementia Project

A project to help people with dementia who are admitted to hospital has been given support in a very practical way by Friends at Broomfield Hospital.

Staff at Broomfield Hospital have been making great progress in a drive to improve the experiences of people with dementia who come into their care. Members of the Friends decided that they wanted to make a significant contribution towards this project, to help patients with dementia feel more at ease when they have to go into hospital, by providing them with essential toiletries. The Friends allocated £3,000 for the initiative and researched and sourced the most suitable items to put in toiletry bags including toothpaste, toothbrushes, soap, flannel, deodorant, shampoo, shaving kit and combs.

After collating all the items the Friends then held a working party to pack the toiletries into the bags, which have now been presented to staff at the hospital to give to patients with dementia.

Clive Gibson, Clinical Nurse Specialist for Dementia said : " It had been apparent for some time that many people with dementia arrive in hospital, particularly from

care homes, with no toiletries. It is very much appreciated that the Friends have kindly provided both male and female toiletry bags which include all the essential items to maintain comfort and dignity. "On behalf of the Elderly Assessment Team and Dementia Group I would like to express our sincere gratitude to the members of Friends at Broomfield Hospital for the toiletry bags.

It is clear that a great deal of time, thought and effort has gone into preparing them, not to mention the cost. I have no doubt that they will significantly improve the experience for people with dementia and also provide greater dignity and comfort."

Alison Douglas, chairman of Friends at Broomfield Hospital said : " I think we can all understand that being admitted to hospital can be a frightening and confusing experience for people with dementia. By having some basic toiletries they will be able to feel more at ease and it will help them to retain their self esteem. We are very pleased to have been able to support the dementia project as part of our overall aim of helping to improve the comfort and care of patients at Broomfield Hospital."



HAYES COUNTRY PARK

FULL 12 MONTH RESIDENTIAL LICENSE

This is a perfect opportunity for you to turn a dream into reality, and enjoy all that Hayes Country Park has to offer in luxury leisure park living.

A well established waterside park, in attractive country side surroundings. With superb on site facilities, including a swimming pool and a waterside bar. Overlooking the river Crouch famous for its sailing, canoeing, fishing and country walks, or just sitting and watching!!

The choice is yours.

All enveloped in this stunning location just five minutes from South Woodham Ferrers. Boasting all essential amenities including direct train route into London, and just a short distance from the historic town of Chelmsford, famous for inventing the radio. The seaside towns of Southend - On - Sea and the picturesque Thorpe Bay, are both just a short drive away.

sales@leisureparks.co.uk

Call us on 01245 320054

Speak to Michelle or Howard

Hayes Country Park, Burnham Road, Battlesbridge Wickford, Essex SS11 7QT



- ADVERTISEMENT FEATURE -

HAYES COUNTRY PARK

After a three year long battle, Hayes Country Park in Wickford have been granted a full 12 month residential licence. Residents can now remain in their homes for the full 12 months; The Park will now be able to apply for a regular refuse collection, and a bus stop to be placed along Burnham Road, to help residents get to local amenities. There are future plans to make sure Hayes Country Park remains the finest park in the county, and one of the best in the country too.

Park Manager Howard said: "We made a promise to our residents that we would do whatever it takes to get the full 12 month Residential Licence, and I would like to sincerely thank all the residents who trusted in our belief of achieving this for them, we are now absolutely delighted. We really could not be happier".

The staff at the Park look forward to seeing new visitors and those who have been before that had concerns over the licence.

The park really is a credit to the company and those currently living there.

There are several show homes to view, and ready for immediate occupation. There has never been a better opportunity to fulfil your dreams of luxury living in the Essex countryside, Hayes Country Park, really are now turning dreams into reality.

For more details about Hayes Country Park Essex, call Howard on **01245 320054**

Or visit the web site: **www.leisureparksuk.co.uk**.

How We Help - On the Wards

The trolley services run by Friends at Broomfield Hospital volunteers are invaluable for patients on the wards. Newspapers, toiletries, confectionary and other items are sold from the trolleys which are taken around the wards by volunteers every day of the week.

Dick and Sandra Fegan are among the dedicated people who provide this vital service and have enjoyed volunteering for more than two years, fitting it in around their other interests, which include football and sightseeing in the UK and abroad.

They became involved with volunteering after their son in law spent time at Broomfield Hospital as a patient. Dick and Sandra who can be seen on the trolley rounds at the hospital three times a week said "It certainly keeps us fit and we really enjoy chatting to the patients. It hopefully brightens up their day and it certainly brightens ours! For us it's a change to give something back. We find our volunteering extremely fulfilling".

Retired NHS employees, Marion Garner and Reg Gwilliams have found their involvement with the Friends at Broomfield Hospital equally rewarding. Marion began volunteering for the Friends back in 2001 on the trolley rounds five days a week. More recently her partner Reg Gwilliams has been helping out at weekends and they enjoy working together.

They both had long careers in the NHS, Marion for 26 years and Reg for 34 years, dealing with maintenance for hospitals



Peter and Dave - Trolley Volunteers

across mid Essex. Now they have retired they find volunteering work a very worthwhile way of spending some of their spare time. They have made friends through their volunteering work and their other interests which include classic cars, walking and bowls.

To Volunteer for the Friends at Broomfield Hospital and for more information call 01245 445285 or visit our Join Us page.

www.fabh.org

FABH Address:

The Friends at Broomfield Hospital Shop1,
Broomfield Hospital, Court Rd, Chelmsford,
Essex CM1 7ET

Telephone : 01245 443285

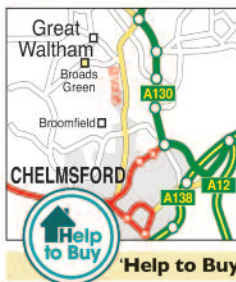


BROADS GREEN, **GREAT WALTHAM**, CHELMSFORD CM3 1DX



Walnut Tree Cottages

Two superb 5 bedroom houses located close to Broomfield Hospital and within a 10 minute drive of Chelmsford town centre and railway station



Situated in a rural and attractive location on the outskirts of Great Waltham in the village of Broads Green, these two 5 bedroom family houses offer 2 bathrooms, en-suite, dining room, study and garage.

Surrounding far reaching views across farmland, peaceful country walks, the local pub and village life await you. For details or an appointment **to view** telephone **07939 281519** or our Head Office.

Price **£599,950** · **Part Exchange** considered. **Moody Homes**
'Help to Buy' scheme available. Head Office 01277 354222 **www.moodyhomes.co.uk**



All About U Care Services

Services we offer

We offer in the home a range of services both short and long term

- Post-op respite care
- Day to day support with daily tasks
- Overnight care
- Rehabilitation after hospital discharge
- Personal care and companionship
- Assistance with household and general chores
- And many other options as required

All services are individually assessed to each person's specific requirements

Contact Us

Call: 07795 891173 • Email: info@aaucare services.co.uk • Web: www.aaucareservices.co.uk



Please help us prevent infections by using the hand disinfectant provided around the hospital

Thank you

Remembering a Loved One

**Why are legacies so important to charities?
Because with your gift the Friends at
Broomfield Hospital can do so much more.**

You don't have to be rich and famous to leave money to a charity when you die. Gifts left in Wills by people like you enables many of the charities we know and support today to survive.

So what better way to be remembered than by leaving a gift to the Friends at Broomfield Hospital in your Will.

Thanks to the generosity of people like you, the Friends have been able to donate even more money to make the time spent in hospital a little more bearable and helps doctors and nurses with the work they do by providing them with new and up-to-the-minute medical equipment. Your legacy gift will enable us to do even more in the future.

Legacy donations, big or small, help us to keep providing those all important extras and of course you can take care of your own family and friends before you think about making a donation to the Friends at Broomfield Hospital in your Will.

In essence it's the same as how you decide how much to donate ordinarily.

You would make sure you had taken care of yourself and your loved ones and then you'd choose to donate what's left over.

There are a few slightly different ways you can leave money to us in your Will:

- You can choose to leave a percentage of your estate known as residuary legacy
- You can leave us a set amount which is known as a pecuniary legacy (but bear in mind that inflation means that over time the real value of pecuniary gifts may change over time)
- Or you may choose to leave an item such as jewellery or property; this is known as specific legacy.

Your solicitor will be able to give you more advice about the different types of gift and we would encourage you to discuss any plans to leave a legacy to the Friends of Broomfield Hospital with your solicitor.

If you need any more details, simply contact Barbara Coupe on 01245 443285

For more information about 'give as you earn' donations and 'Just Giving' please refer to fabh.org

Registered charity number 260377

MARK TOLSON SCAFFOLDING

Mark Tolson Scaffolding are family-run scaffolding company, covering Hoddesdon and the surrounding areas in Hertfordshire since 1992. We specialise in erecting scaffolding for residential and commercial clients. Whether you need scaffolding for your project, temporary roofs, extensions and solar panels or scaffolding needs, we have what you need at prices to suit your budget.

Contact us for free quotes and advice:

T: 01992 511 439

M: 07507 564 181

E: enquiries@marktolsonsscaffolding.co.uk

The Inn Sandwich



3 Wheatear • Perry Road • Witham • Essex CM8 3YY

Try our delicious handmade Sandwiches
French Sticks and Rolls

Fresh cakes • Salads • Tiger Rolls
Cheese Top Rolls • Sausage Rolls • Pasties
Cheese & Bacon Turnovers

Together with a whole range of other products
for you to select from

One of our refrigerated vans will
call on you every day. To have a
van call completely free of charge

PLEASE CONTACT:

Tel: 01376 503569

Email: info@innsandwich.com

JOHN MICHAEL INTERIORS

Kitchens

Bedrooms

Home

Office

Full fitting service
or supply only

Replacement
doors & worktops

All units
manufactured for
you personally



All major brands
and appliances

Free planning &
estimating

Friendly service
& advice

30 years
experience

Mobile
07947 744 653

www.johnmichaelinteriors.com

Easy steps to make a donation

I would like to make a donation of £

Please make your donation payable to the Friends at Broomfield Hospital (or FaBH)

Name

Address

Postcode

GIFT AID DECLARATION

Under the Government's Gift Aid scheme, the Friends at Broomfield Hospital can recover the Income tax you pay (£10 to you becomes £12.82 to us), but you need to sign the declaration below:

I am a tax-payer and I wish the charity to reclaim tax on my donation:

Signed

Dated

Please note : I confirm I have paid or will pay an amount of Income Tax and/or Capital Gains Tax for the current tax year (6 April to 5 April) that is at least equal to the amount of tax that the Friends will reclaim on my gifts for the currently tax year. I understand the charity will reclaim 25p of tax on every £1 that I have given.

Please notify the charity if you:

- # Want to cancel this declaration
- # Change your name or home address
- # No longer pay sufficient tax on your income and/or capital gains

If you pay Income Tax at the higher or additional rate and want to receive the additional tax relief due to you, you must include all your Gift Aid donations on your Self Assessment tax return or ask HM Revenue and Customs to adjust your tax code.



Becoming a volunteer—please tick in the box to register your interest

In the Shop

☐

Trolley Service

☐

Library Service

☐

Your commitment as a Friends volunteer could make a real difference, please complete your name & address in the section above and return it to the Friends Shop1, Broomfield Hospital, Chelmsford, Essex CM1 7WE

Name

Address

.....Post code Telephone

Imagine...is this your perfect retirement?

- ✦ A spacious, modern apartment kept spotless by our weekly housekeeping service?
- ✦ Three fresh meals cooked for you every single day? ✦ No worries about the security and maintenance?
- ✦ All this and more from an affordable rental price! ✦ And no more household bills. GUARANTEED.

Don't just *imagine* it. Live it. Call 01376 335518



The Hawthorns
RETIRE WITH STYLE

Tortoiseshell Way, Braintree, Essex, CM7 1TD

www.hawthornsretirement.co.uk



ZEN
NOODLE BAR

01245 353899

86-87 DUKE STREET

WWW.ZENHELMSFORD.CO.UK



Our Free Library Trolley Service

As well as the Ward Trolley round we also have our free Library Trolley Service where our volunteers visit the wards and departments throughout the hospital bringing a friendly face and a chat to patients. The service runs on Tuesday and Thursday mornings and on the trolley is a wide selection of books for patients to choose from.

Roger and Marion Gardiner are two of our current library volunteers, having been introduced to volunteering through a close relative.

Roger has been retired for about four years after 25 years as an Engineer Surveyor/Risk Assessor for a large insurance company, although he does still do some consultancy work for a small engineering company in Billericay. Marion has had various part time roles over the years but ceased working a couple of years ago. They both found they had some spare time and volunteering has been the answer, it has given them the perfect opportunity to put something back into the community.

"A large part of taking the library trolley to the wards is a little light conversation with certain patients who perhaps don't receive many visitors and this is certainly no hardship for me, I enjoy getting into



conversations with people" says Marion. Volunteering suits my nature and I am very much a people person. Roger's love of reading and being able to help choose a suitable book for a patient's reading taste makes this an ideal volunteering role for him. "As yet no-one has told me that the item I chose for them was rubbish, but perhaps that is because people are just being polite" says Roger.

If you would like to join our friendly team of Trolley Library Volunteers or donate some good quality paper back books, please do contact us on:

01245 443285

THE KINGS ARMS

01245 440258

295 Main Road, Chelmsford,
Essex CM1 7AU



- Sunday Carvery between 12 - 3
Homemade locally sourced produce all prepared and carved in front of you
- Lunches and dinners Mon - Fri 12 - 7.30
Two menus available and a specials board
- We have free WiFi, a pool table and a darts board
- Saturdays are Curry day! Two or three curries available with rice or chips
- Live bands/singers every Friday Night
- Functions and meetings catered for at any time
- NHS Card holders get a 10% discount on meals

www.kingsarmsbroomfield.co.uk



***Quality Dental Care for
all the family***

ANTHONY CLOUGH

BDS HONS LDS RCS ENG

New Patients Welcome

Telephone: 0844 8750039

“Sharro Dental Surgery”

Moulsham Street, Chelmsford

Videoflourescopy Chair



Volunteers from the Friends at Broomfield Hospital have been able to see how their latest donation is improving patient care by testing a new Videofluoroscopy chair, purchased by the hospital's Speech and Language team.

The specialist chair is used when a patient has difficulty swallowing and needs an x-ray to accurately diagnose the problem. The team can then start the correct therapy to make swallowing easier and safer. This test is useful for a wide range of patients, including those who have had a stroke or following surgery and means many patients won't need to be nil-by-mouth for extended periods of time.

Karen Blackmore, Speech and Language Therapist at Broomfield Hospital: "Good nutrition is essential to aid in the recovery of patients, as well as to maintain independence and dignity, so it is important that patients with difficulty swallowing are

Volunteers from the Friends at Broomfield are shown the new chair by the Speech and Language team while Yvonne Carter, Charities Support Officer, tests it for comfort

treated quickly and appropriately. The new videofluoroscopy chair is portable and adjustable, which makes it easy for the staff to transport patients and accurately position them before the x-ray. As I'm sure the Friends will agree, it's also extremely comfortable which is far better for our patients, as the test can take up to half an hour. We'd all like to thank the Friends for making it possible for us to purchase this chair and greatly improve the service we can offer our patients."

The chair is the latest piece of equipment to be bought by the Friends who are dedicated to helping improve life for patients, staff and visitors at Broomfield Hospital. For more details about the group visit the website fabh.org



Greenfield Creations

Helping people preserve and protect the environment

The cardboard coffin... Made from biodegradable cardboard.

Visit the new website to discover our new range of extended cardboard and wooden designs.

Take a look at our coffin of the week with a 360 degree rotational view.



Why not personalise a coffin with your own ideas, images and personal touches and we will have your design back to you within 24 hours.

We recommend a maximum load of 25 stone (1636kg)

Tread lightly on the Earth, even when leaving it...

Chapel Road,
Ridgewell,
Essex,
CO9 4RU

Tel: 01440 788866

www.greenfieldcreationscoffins.co.uk

RESIDENTIAL CARE HOME FOR OLDER PEOPLE

FOREST HOME



Our 24 hour caring facilities offer a wide range of comforts to ensure a relaxed and homely feel:

- Respite and day care
- Situated in beautiful garden surroundings with immediate access to all local amenities including the local GP
- Visitors are welcome at any time
- Ensuite facilities
- Good home cooked meals – special diets catered for
- Visiting library, Hairdresser, Chiropodist, Church service and entertainment events

58 Swan Street, Sible Hedingham, Essex CO9 3HT • Call 01787 460361
Email: foresthome58@btinternet.com • www.forestcarehome.com

Bladder Scanner



Members of Friends at Broomfield Hospital are pictured handing over the scanner to staff in the urology department at Broomfield Hospital.

Patients at Broomfield Hospital needing bladder scans will have a faster and more efficient service, following the presentation of new equipment to the urology department by Friends at Broomfield Hospital.

The group have officially handed over a Cubescan 700 bladder scanner for the department for use in the outpatient clinic and on the wards. The Friends have contributed £3,558 towards the new touch-screen colour hand-held scanner, which is more than half the equipment's total cost of £6,000.

Alison Douglas, Chairman of Friends at Broomfield Hospital said: "Scans can now be done in the outpatient clinic on the same day and, as the scanner is so light

and portable, it can easily be moved around the ward and operated at the bedside, wherever it's needed most urgently. This means the medical team can not only make a correct diagnosis early but can also be confident to reassure and discuss appropriate treatment with patients. It also frees up the radiography department and allows them to concentrate on providing more involved scans that may be required. The scanner is our latest donation of specialist equipment to the hospital and we are delighted that it will help improve the service for urology patients."

For more details about the Friends at Broomfield hospital group call **01245 443 255**

Internal Zones Map

Use this map to help plan your journey

This map is also located at Information Points in the hospital and can be viewed on the Self Check-in kiosks







Retire here & have a high quality lifestyle on your doorstep

An over 55s Retirement Village in Halstead with Cinema, Cafe, Hairdressers, Care facilities on site at Colne View & an adjacent Bowls Club

Last 4 Cottages priced from £225,000

2 & 3 Bedrooms available

Sales Office -

01787 273737

www.prioryhall.co.uk

Show home Open

Satnav ref - **CO9 2ET**

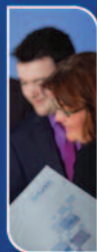


PRIORY HALL
HALSTEAD ESSEX

**75% of Phase 1
NOW SOLD OR
RESERVED**



**Chartered Accountants
Tax Specialists | Business Advisers**



Chelmsford Office t: 01245 254200

e: enquiries@bird-luckin.co.uk

birdLuckin

www.bird-luckin.co.uk



- Trees • Pruning • Hedge Trimming
- Trees & Roots Removed • Topping
- Rotovating • Fencing • Garden Design
- Play Areas • Decking • **Block Paving**
- Tar & Shingle • Turfing • Patios

Property Maintenance

- Roofing • Chimney Repairs • Gutters
- Building Work • Painting • Plumbing

**Free written
quotes and advice**

01245 422712

07711 606561

www.highwoodlandscapes.co.uk



Multi Faith Centre

How Do You Contact Us?

Chaplains are usually on site Mon - Friday 8.30am -16.30pm and Sun 9.00am -12.00 noon. We are on-call outside of these hours, to make a non-urgent appointment to see a chaplain phone x5244. There is voicemail if we're out.

Where is the Faith Centre?

The Faith Centre and chaplaincy offices are situated at location A209. It is open 24 hours for anyone to come for quiet space and prayer. An Islamic Ablutions room is available 24 hours and screens and prayer mats are in the Faith Room. Other religious resources are available on request. The Spiritual Care and Chaplaincy Department is pleased to provide a calendar of high holy days and celebrations from different faith communities. If you or your faith community wish to hold a service on one of these significant days, please contact

the Chaplaincy Department in order to reserve the Faith Centre.

Regular services in the Faith Centre are as follows:

Monday - Thursday 7.30am:

Hindu Meditation

Tuesdays 12.15pm -12.45pm: Holy Communion (Church of England or Free Church)

2nd **Friday** of each month 12.15 -12.45pm: Roman Catholic Mass

Wednesdays 8.00am: Christian Meditation

Fridays 7:00am: Hindu Meditation

Fridays 1.15 -1.45pm: Jum'ah prayers (Ablutions room available)

Other **weekdays** 12.15pm:

Short service of Christian prayers and reflections

Sundays: No services in Faith Centre

Holy Communion (Roman Catholic, Church of England and Free Church) or prayers are brought to the bedside by our Eucharistic Ministers.



B&L SKIPS

- Building waste disposal
- Commercial waste disposal
- Construction waste
- Garden waste removal
- House clearance
- Maxi skips
- Mini skips
- Rubbish clearance
- Skip bags
- Site clearance
- Waste management



Tel: 01245 401117 • Mob: 07447 504102
8 Meadows Close, Ingrave, Brentwood, Essex CM13 3RF



Medical and Industrial Installations and Maintenance of:

- Gas Distribution Systems • Manifolds
 - Gas Scavenging Systems
- Electrical Installations • Vacuum Systems
- Alarm Systems • Gas Detection Systems
- Patient Environment Installations
 - Medical & Surgical Air Systems

K & H Medical Ltd are one of the leading installers of medical and laboratory gases in the UK and are now celebrating 29 years as a market leader in this industry.

K & H Medical Ltd
20-21 Twyford Business Park, London Road
Bishop's Stortford, Herts CM23 3YT
Tel: 01279 757835 Fax: 01279 757837
Email: admin@khmedical.co.uk
www.khmedical.co.uk



Approved Contractor
Approved Contractor

CALLING ALL VOLUNTEERS!

Your Air Ambulance Needs YOU!

We urgently require volunteers to help keep the County's life-saving **Air Ambulance** flying.
Whatever time you can spare, we need you more than ever!



Think you could help?
Please call 0845 2417 690
EssexAirAmbulance.uk.com

support your
life-saving **charity**

ESSEX
air ambulance
Registered Charity 1108989

Friends at Christmas

Christmas can be a wonderful time, but it can also be very challenging if you are unlucky enough to be in hospital as a patient and away from family and loved ones.

The Friends continue to actively support the Hospital throughout the Christmas period, to make sure that patients and their visitors can still have festive surroundings and enjoy some celebrations together.

For many years the Friends have supported the wards by giving a donation to ensure that staff can provide extra treats for patients to mark the occasion.

The Friends also pay for a large, decorated Christmas tree to be installed at the entrance of the Hospital at the top of Court Road, to provide a beautiful twinkling beacon which greets all staff, patients and visitors as they arrive at Broomfield.



CROSS ROADS CARE

Braintree District
& Chelmsford



Are you a carer in need of a little help and support, would you like a little time for yourself, are you afraid to leave the person you are looking after on their own. If so then we are here to help.

We provide regular short breaks for carers who would like a little time to themselves to do their shopping, attend appointments, visit friends or simply have a rest from their caring role, the choice is theirs. We have a team of qualified care support workers who will come into your home and take care of the person with care needs helping you to have a life outside your caring role.

For more information please Telephone: **01376 529985**

Email: braintreexroads@btconnect.com

or visit: www.braintreecrossroadscare.org.uk



Davies & Son S
GROUNDWORK CONTRACTORS



Driveways & Groundwork ~ Buildings & Walls ~ Patios & Paths ~ Fencing & Turfing

Whether you want to transform the appearance of the front of your property or completely re-design the back garden, we aim to exceed your expectations. In just a few days, our skilled project team can dramatically change the look and value of your property.

For a free site survey and fully inclusive quotation call:

01245 382138 | 07774 727475 | 01371 829046

www.cdaviespaving.co.uk | C Davies & Sons, 21 Writtle Road, Chelmsford, CM1 3BS



Smile | Recycle

Thinking of the
environment

Please pass this magazine
on, or recycle it!



Friends at Christmas

Continued



When the Christmas trees inside the hospital are dedicated by the Hospital's Chaplain and the Chairman of the Trust, the Friends provide mulled wine (non alcoholic) and mince pies which are enjoyed by patients, staff and visitors as they sing carols along with the singers and musicians who kindly support the Hospital on that day by joining in the festive fun.

The Friends also provide the prizes for the highly competitive Ward Christmas decoration competition, which has been running for many years now. This competition is undertaken with much



enthusiasm, creativity and competitiveness by the members of the staff in each department. Some of the efforts are truly spectacular and really make a huge difference to the hospital environment.

All members of the Friends make a great effort to do whatever they can to support the hospital at this very special time.



POWELL SYSTEMS

Best wishes to all
staff, patients
and volunteers



Powell System Engineering is a Building Services Controls Company specialising in the Building Energy Management Systems using a product called Trend. The company works for key blue chip companies, the government, hospitals, schools and many large contractors. PSE takes advantage of new technology to assist clients in becoming more environmentally and energy efficient.

01689 879000

www.powell-systems.co.uk

Unit 2, Fitzroy Business Park
Sandy Lane, Sidcup, Kent DA14 5NL

Change the direction of your future

**Learn the skills you need to
get the job you really want.**

Our Diplomas and Courses will
give you work-ready skills, in
just a few weeks.

Make a real difference to your
lifestyle and prospects with
Pitman Training - recognised
and respected by employers
nationwide.



**Call us now for a FREE, friendly
career consultation**

01245 349 299

or visit

[pitman-training.com
/chelmsford](http://pitman-training.com/chelmsford)



Get the Pitman Advantage™



E.J. TAYLOR & SONS LIMITED

Building & Civil Engineering Contractors

www.ejtaylor.co.uk

*Send their best wishes
to all patients and staff*

e2v, the Chelmsford based global technology company, is pleased to support The League of Friends in providing information for patients, staff and visitors at Broomfield Hospital.

e2v.com

e2v

Friends2 Shop Aids for Daily Living



sock aids, dressing sticks, long handled shoe horns etc. to assist dressing.

One of the best selling items is the 2-in-1 reacher and dressing aid. A range of Thera-Band (resistive exercise bands) and gel exercise balls are also available to buy to aid rehabilitation. Last, but not least, items to assist with personal care such as male and female urinals are also always on the shelves.

These are just a selection of the mobility aids and products for comfort, safety and independent living which are available in the shop. Please do visit the Friends2 shop to see the full range.

A wide range of aids for daily living are now stocked in the Friends2 shop which is situated at the end of the atrium next to A111.

Various mobility aids are for sale, from adjustable sticks (some very colourful) to rollators suitable for indoor and outdoor use.

Also available are trolleys for transporting meals and drinks safely from room to room. Various feeding cups, large handled cutlery and plates to assist with drinking and eating are also stocked, as well as



Frankie and Michael


COPING
 with
BREAST CANCER
Registered Charity No. 1022588

www.copingwithbreastcancer.org
DON'T WORRY ALONE:
 Telephone our 24 hour support helpline:
0845 6017152

VOLUNTEERS NEEDED
 For our 24 hour helpline and/or supporting clients who are going through the trauma of breast cancer. If you are interested in becoming a volunteer, and you are at least 12 months post treatment please telephone the helpline for an information pack. Training will be given and out of pocket expenses reimbursed.



A-OK 
CARE MONITOR

Keeping tabs
 on Mary ... from
 anywhere in the
 World.

Helping families and communities care for
 their 'loved ones' at home with the use of
 intelligent monitoring.

Receive text or call alerts based on:

-  Regular movement
-  Room temperature
-  Day/night wandering
-  Power failure
-  Home Security
-  Pendant SOS
-  Carer Verification

For sales & friendly advice
0800 9 10 10 20
www.a-okmonitoring.com

*People from all walks
 of life can Foster..*





SFS is a long established
 charity recruiting individuals
 and families to look after
 children in care. Do you
 want to make a difference in
 a child's life, call us now....

www.fostering.com
enquiries@fostering.com
01268 574265 

G. Collins & Sons
Funeral Directors Ltd
An Independent Family Company
Established since 1893 *Fifth Generation*

Covering Braintree, Witham
 & All Surrounding Areas


Directors: Brother and Sister
 Mr. James A. Collins & Mrs Gemma Burdon



Tel: **01376 583750** (24 hr. Service)
 Email: enquiries@gcollinsandsons.net



Can you help us?

Mid Essex Hospital Services 
NHS Trust

If you would like to support our work but do not have the time to volunteer, you can become an associate member for only £10 a year.

Please include your contact details. You will be sent a badge and a newsletter to keep you in touch with all the news.

Please send a cheque made out to:

Friends At Broomfield Hospital

and send to:

Shop 1 Broomfield Hospital, Chelmsford, Essex CM1 7WE.

Or if you do have a few hours to spare and would like to volunteer with our

SHOP or WARD TROLLEY

Please call us on **01245 443285**

Friends at Broomfield Hospital

SPH PLUMBING 0808 1781 655



- Free Quotes
- No Call Out Charge
- Friendly Service

40 YEARS EXPERIENCE

- Plumbing Installations, Repairs and Maintenance
- Gas Central Heating Systems, Supply, Fit and Maintain
- Bathroom and Shower Design and Installation
- Accessible Bathrooms Designed and Installed for the elderly and disabled
- Boiler Service Contracts

Head office Tel: 01376 529 890
Chelmsford office: 01245 496 000
Email: geoff@sphheating.co.uk

Provide

**Are you worried about your own health or that of a family member?
Want to do something about it?**

Our Health Improvement team run a range of **free** programmes to support you and your family to make lifestyle changes:

- Maintain a healthy weight
- Feel fitter
- Increase your activity levels
- Stop Smoking
- Falls Prevention

01621 727354

or you can find us in the Atrium at
Broomfield Hospital

E-mail: provide.healthimprovement@nhs.net
www.provide.org.uk

Delivering NHS and Local Authority Community Services

Provide is the trading name of Central Essex Community Services a Community Interest Company
Registered in England Wales no.07320006 Provide Corporate Offices: St Peter's Hospital,
32a Spital Road, Malden, Essex CM9 6EG



ELMTREE Garden Services

ALL TYPES OF TREES
LOPPED, TOPPED & SHAPED
FRUIT TREES PRUNED & SPRAYED

TOPPED & TRIMMING
CONIFER TREES A SPECIALITY

**TREES REMOVED AND ALL
ROOTS DESTROYED**

GARDEN PLANNING - FENCES
LAWNS TAKEN UP & RE-LAID
BORDERS - ROTOVATING

- **ALL RUBBISH CLEARED** •

Over 65% of our work comes through recommendation

Call now for a **FREE QUOTATION** and expert advice
01621 892530 or 07885 460528

Doors **Craft** Windows
Conservatories



Providing Window Solutions

Craft Windows is a family owned business based at Meadowcroft Garden Centre, Woodham Road, South Woodham Ferrers, Essex and has more than 26 years experience in the supplying and fitting of double glazing. In that time it has built up an excellent reputation in reliability, care and service. The company is a member of Fensa and the Glass & Glazing Federation (GGF) which guarantee the products used are of a high standard. We also offer an insurance Backed Guarantee.

- **Garages**
- **Roof Line Products**
- **Conservatories**
- **Composite Doors**
- **Windows**

Meadowcroft Nursery
Woodham Road
Battlesbridge
Essex SS11 7QU

Tel: 01245 322742
Fax: 01245 322844
craftwindowstld.co.uk



Our Wonderful Volunteers

A special award has been given to the Friends at Broomfield Hospital to recognise the value of all the work carried out by the organisation's dedicated volunteers.

At a ceremony held at Hylands House by Mid Essex Hospitals Trust, to highlight and reward the good work carried out at

Broomfield Hospital, the Trust's Chairman, Professor Sheila Salmon, gave her special award to the Friends group for their efforts to improve facilities and care for patients, visitors and staff at the hospital. Jenny Gillingham and Barbara Coupe attended the ceremony to accept the certificate on behalf of the Friends.



Jenny and Barbara - Hylands presentation



Cinderella's

Health and Beauty Treatments

Welcome to Cinderella's Beauty Salon

We are an established beauty salon in the picturesque village of Wickham Bishops Essex, offering some of the most advanced beauty treatments available along with the traditional favourites.

We pride ourselves in offering a welcoming, friendly atmosphere and we have taken extra care to ensure that our treatment rooms provide you with a relaxing and peaceful environment.

Our treatments are designed to ease the stress of everyday life. So whether you only have 15 minutes or have time for a luxurious 2 hour treatment you can be assured that you will be pampered from beginning to end. Our aim is simple – look good and feel great. We offer treatments for men, women, little ladies and little teens. Our dedicated therapists are here to help you every step of the way so that you receive the very best from your treatments.

Our commitment to continuous training ensures that our therapists have the ability to advise you on all treatments available. They also have full understanding of our well renowned product range.

A unique experience awaits you, where time becomes meaningless and your personal well-being everything.

Opening Times

MONDAY.....10am - 8pm
TUESDAY.....9am - 5pm
WEDNESDAY.....9am - 5pm
THURSDAY.....10am - 8pm
FRIDAY.....9am - 5pm
SATURDAY.....9am - 5pm
SUNDAY.....CLOSED

Contact Details

10 The Street, Wickham Bishops
Essex CM8 3NN

01621 893331

info@cinderellasbeauty.co.uk

www.cinderellasbeauty.co.uk

FANCY A NEW FRONT DOOR?

GIVE US A CALL ON

01245 440410

*A huge range of
Composite Doors
Windows
Conservatories
and French Doors*

**CHELMSFORD
DOOR & WINDOW
Company**

115 Patching Hall Lane, Chelmsford
Essex CM1 4BY

Donor Card

**I would like to help someone
to live after my death.**

Let your relatives know your wishes,
and keep this card with you at all times

**Don't
delay do it
today**

History of Broomfield Hospital

Broomfield Hospital, built as a sanatorium for TB patients, was one of the last of its kind to be completed before the outbreak of the Second World War. It was built on the site of a roomy Edwardian mansion, Broomfield Court, and around 88 acres of land originally called Little Dumplings. The house built in 1904 for Latermar and Louisa Radcliffe is graced with magnificent oak and chestnut panelling, which can still be seen today in the entrance staircase. Constance Nash, Louisa Radcliffe's daughter, sold the house and grounds in 1935 to Essex County Council and the house itself became the hospital's Nurses Home.

Building work for the new hospital began in June 1937 and after delays caused by wartime difficulties, the hospital's first patients were admitted in 1940. There were

312 male patients and bed occupancy was anything from 6 months to about four years per patient. The hospital was soon working to full capacity and was the only centre for thoracic surgery for pulmonary tuberculosis in Essex. Towards the end of the war 50 per cent of patients were ex-service men.

Broomfield Hospital was originally known as Essex General Hospital, and in the early days its south facing "butterfly" wings caught the sun for the benefit of the TB patients. Even during the winter months beds were wheeled out onto the balconies. Fresh air, bed rest and good food were all part of the treatment and much of the food was grown on the Hospital Farm. Often the view from the balconies was a field of cabbages – not quite the right aroma conducive to sharpening the appetite!

Boredom was a real hazard for TB patients who faced long stays in hospital. Much of the time was spent playing cards and writing articles for the hospital magazine. One highlight of the week was to be wheeled on trolleys (four to a trolley) to the Concert Hall for a film show. This event was a sight to behold as each trolley load competed to be there first. The dexterity of the porters controlling the passage of



Kavanagh's CATERING SERVICES

We cater for weddings, funerals, dinner parties, anniversaries, christenings & corporate events

Kavanagh's catering is an independent catering company with over 8 years experience in private and corporate entertaining.

Our emphasis is on using as much local produce and home grown seasonal fruit and vegetables for excellent flavour wherever possible. All our dishes, cakes and desserts are home-made using free-range eggs and we never buy in commercially manufactured products.

We offer delicious menu suggestions for you to choose from or we can personalise a menu tailored to your taste and budget. We work closely with you to ensure your event is a success on every level. We can provide staff, crockery and cutlery and can deliver to your chosen venue or stay and serve. We have experience in working in all types of kitchens and kitchen tents for marquee events.



07964 346623

www.kavanaghscatering.co.uk

Email: enquiries@kavanaghscatering.co.uk

Stay independent

Enjoy life in your own home

Livability Lifestyle Choices East Anglia can help you live the life you choose.

POST OPERATIVE

if you just need extra help for a short time

GETTING ORGANISED

help with letters, appointments and bills

GOING OUT

we can help with hobbies, outings or shopping trips

HOLIDAYS

we can help you plan, book and even accompany you on holiday



From one hour a week to 24 hour care - we can tailor our support to meet your needs

You make the choices - we make it happen

For more information call 01277 355646 or 020 7452 2087 or visit www.livability.org.uk/lifestylechoices

Registered charity no: 116330 Registered in England no: 5967057
Livability is a company limited by guarantee

livability
Choice in aged care

HARVEY SMITH+CO = Friendly expertise and advice

CHARTERED CERTIFIED ACCOUNTANTS

Delivering responsive, cost-effective accounting solutions and business advisory services to the business community.

- Self Employed Accounts
- Partnership Accounts
- Limited Company Accounts
- Self Assessment Returns
- VAT & Bookkeeping Services
- Tax Planning
- Payroll
- Monthly CIS Returns

Fixed Fee Quotes & Flexible Payment Terms

Please contact us to discuss your requirements

Call: 01621 783688 Fax: 01621 782497

Email: info@harveysmith.co.uk

Visit: www.harveysmith.co.uk

Harvey Smith & Co Ltd: 2 High Street, Burnham-on-Crouch, Essex. CM0 8AA.

V.A.T. No 937 1185 16 Co Reg No 6287507

The Rose & Crown

10%

off of all food at
the Rose and
Crown.

In recognition of the hard work, and contributions made to the community by the NHS staff, we at the Rose and Crown, Great Waltham would like to offer staff only a 10% discount off of all food. Please present your NHS ID card when ordering your food. We look forward to seeing you soon.

The Rose and Crown
Minnow's End
Great Waltham
CM3 1AG

Tel: 01245 360359 E-Mail: richard@roseandcrowngreatwaltham.co.uk

History of Broomfield Hospital

Continued



these chariots was only surpassed by the agility of the pedestrian traffic they met on the way!

As TB declined, the hospital developed. The North East Metropolitan Regional Hospital Board took over when the National Health Service was founded in 1948. All patients were male until 1959 when it saw the first intake of 50 ladies and six newborn babies with their mothers. By the 1960s Broomfield had become a general hospital with just one chest ward.

Since then many new services and wards have been added to Broomfield Hospital and by 1984 these included an Accident &

Emergency Department, Pharmacy, Rehabilitation Department, Operating Theatres, Intensive Therapy Unit and new specialised wards. The original concert hall was converted to house a Medical Academic Centre. In 1987 Princess Royal opened a new ward block. Work then started

on upgrading the east wing of the hospital and the west wing was demolished the following year.

Extensive development works continued throughout the 1990's and saw an increase in clinical space at Broomfield Hospital of more than 50%. On the 18th October 1996, John Major, Prime Minister, undertook the Topping Out Ceremony and the new "East Wing" was officially opened in 1998 by the then Trust Chairman, Sir Jeffery Bowman, former Nurse Tutor Margaret Craig and former consultant anaesthetist Dr David Walmsley.

More recently, a new hospital wing was completed and opened in November 2010.

Totham Lodge
HOME FOR THE ELDERLY
Registered by The Care Quality Commission



- A private care home for over 40 yrs.
- Owned by current family since 1996.
- Rooms with views, set in 35 acres of private grounds.
- Traditional home cooking freshly prepared.
- 24 hr care, permanent/respite + dementia provided by fully trained staff.



For all enquiries, bed vacancies/recruitment etc please contact us:
Totham Lodge Home For The Elderly
Broad Street Green Road, Great Totham, Maldon, Essex CM9 8NU
Telephone: 01621 891209. Fax 01621 893582
www.tothamlodge.co.uk



DAMOR CARE



Recognising the need for quality care

Damorcare is a domiciliary care provider. We believe in the safeguarding of our service users whilst promoting independence and inclusion. As a company our priority is to improve the lives and care service of the people we support by promoting choice and offering a personalized service that caters for every individual's needs. We recognize the need for quality and consistency in care. We are also part of the BME (Black Minority Ethnic) community group in Essex and support all cultures.

Damorcare strives towards quality of care, achieving realistic goals and Innovation. This includes the following:

- Spiritual, emotional and physical needs
- Support in a friendly, caring and open manner, creating an environment of trust, positivity and inclusion
- High quality of care through individual care plans
- Encourage and maintain full, ongoing consultation with each service user including individuals input with the preparation of individual care plans and assessed needs
- Respect the privacy and dignity of service users at all times
- Provide individual support
- Comply with relevant care standards and legislation

07825662283
145 Rochester House, New London Road,
Chelmsford, Essex CM2 0QT
Mobile: 07825662283 | Mobile: 0771779888
Email: damorltd@gmail.com
admin@damorcare.co.uk



Abacus Investments
Where Simplicity Counts
We can buy your property for cash.

Do you want to sell your property no chain no hassle?
Looking to rent a property in the local area?
Want to invest part or full in property?

Save money on home/business utilities.
A possibility of earning extra income.

Call us anytime 01702 410 923
www.abacusinvestmentsuk.com

M & P Builders Ltd



Family Run Business
General Builders
All Work Guaranteed

01371 878053 • 0800 1182050

We are a family firm of builders who have been working and living in the Great Dunmow and surrounding area for a period of around 40 years.

www.mandpbuilderltd.co.uk

JT Contractors Ltd

Tarmac & Block Paving Specialists
Driveway Specialists

FOR ALL YOUR BUILDING NEEDS
Domestic & Commercial
All Work Guaranteed
FREE ESTIMATIONS & ADVICE

TIPTREE
01621 834668
MOB 07796 075348

Proud members of
Checkatrade.com
Where reputation matters

Abbey Liftcare

Are glad to be associated with Broomfield Hospital
Ability House, Brooker Road
Waltham Abbey EN9 1JH

01992 655960
www.abbeyliftcare.co.uk

A Friends Get Together



SECBUILD LTD

BUILDING CONTRACTOR NHBC

- * FREE ESTIMATES ON *
- * NEW BUILDINGS * EXTENSIONS *
- * CONVERSIONS * ALTERATIONS *
- * INSURANCE AND GRANTWORK UNDERTAKEN *
- * BUILT TO QUALITY & ON TIME *

TEL/FAX: 01621 743627

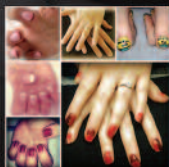
MOBILE: 07860 201164

62B NIPSELLS CHASE, MAYLAND, CHELMSFORD, ESSEX CM3 6EJ
NHBC Registered

Brewers

FOR DECORATING MATERIALS

1 Grafton Place Dukes Park Ind Estate
Chelmsford CM2 6TG Tel 01245 450687

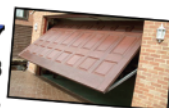


Beautiful Natural Bio Gel Nails

39 Beadle Way, Great Leighs, Chelmsford CM3 1RT

Tel: 07557 506399

ROLLAWAY GARAGE DOORS



Your local specialists in Roller,
Sectional and Up & Over Garage Doors
Over 30 years experience of personal, friendly service

- FREE, No Obligation Surveys & Estimates
- Fully Guaranteed, High Security Doors
- Fully Automatic or Manual Operation
- Made to Measure in your Choice of Colour
- Very High Quality at Competitive Prices

EXPERTS IN
AUTOMATED
EXISTING
GARAGE DOORS
AND GATES

CALL TODAY 01245 202866
www.rollawaygaragedoors.co.uk

ESSEX DOMESTIC

01245 258837

37 Mildmay Road, Chelmsford
Essex CM2 0DR

Are you looking for a new washing machine? Need some repair work done to your dishwasher? Then make sure you come to Essex Domestic Spares today! We offer a personal, friendly and helpful service at all times, ensuring you receive the products and customer care that you require.



essexdomspares@aol.com

washingmachinesessex.co.uk

THE LEMON TREE

The Lemon Tree Cafe
Breakfast croissants & tea cakes
Home-made quiche, lasagne & soup
Home-made cakes, a wide selection of teas & coffee
Milkshakes & Hot chocolate
Sandwiches, baguettes, bagels, ciabattas, wraps & jacket potatoes with a wide selection of fillings
Weekly Specials
Come and see us for home-made lunches & snacks
Contact Kellie on
07835 230200 • 01245 699187
Open 8am - 5pm Mon - Sat | 34F Moulsham St, Chelmsford, Essex



SHOPPING FOOD & FUN

A Centre for all Seasons

Come and see what **treasures**
you can find at the **prettiest**
Craft Centre in all of Essex!

Blake End, Nr Braintree, Essex, CM77 6RA

www.blakehousecraftcentre.co.uk



East Anglian Denture Services

All Types Of Denture Repairs
Additions To Existing Dentures
Fast, Friendly & Discreet • Duplicate Dentures
Appointment Collect Or Postal
Gum Shields & Night Guards
Anti-Snoring Appliances



01245 382 665 • 07875 527 130

precision-prosthetics.co.uk

17 Remembrance Avenue, Hatfield Peverel CM3 2JD

Verifit Paediatric Equipment



Children needing checks for hearing problems are to have a better service in the community thanks to a special new portable scanner being taken out on the road by staff from Broomfield Hospital's paediatric audiology department. The equipment, a Verifit Scanner, has been funded by the Friends at Broomfield Hospital group and the former Chelmsford Deaf Club.

The new scanner means patients and their families will no longer have to come to the hospital, as staff can now see them in the community.

Sharon Comben, Audiology Manager at Broomfield Hospital said :

"We can take the Verifit Scanner out into the community, to either clinics or schools where we can test between 15 and 20 children at a time.

"This is much faster for us and means patients no longer need to book an appointment at the hospital. We can also visit babies and children at their home, which is far more comforting for them and their families.

"As a result, our patients are being treated quicker and we are providing a much better family friendly experience for them."

Members of Friends at Broomfield Hospital, volunteers were invited to visit the audiology department and were impressed with the difference the new scanner is making to youngsters and their families.

For more details about Friends at Broomfield Hospital visit www.fabh.org
Pictured: Members of Friends at Broomfield Hospital being shown the new equipment by Sharon Comben and Joseph Munyonga Paediatric Lead audiologist.



WITHAM Mobility

NEWLY OPENED

FOR ALL YOUR MOBILITY NEEDS INCLUDING:

- Sales & service of mobility scooters & wheelchairs
- New & used scooters at competitive prices
- Scooter & wheelchair hire, daily or weekly
- Rise & recline armchairs & beds
- All other mobility needs including "Cosyfeet" shoes & slippers

FREE DELIVERY WITHIN 10 MILES
Tel: 01376 618747
 33 The Newlands, Witham, Essex CM8 2AP



Would like to send their best wishes to all patients & staff

www.cricketbatwillow.com

Trust the domestic cleaning experts at MOLLY MAID

That's what tens of thousands of people around the world do!

- Uniformed and professionally trained staff
- 100% guaranteed and fully insured
- Regular or occasional cleans
- Free in-home estimate
- All materials supplied
- No contracts

Tel: 01245 494003
 emma-brooks@mollymaid.co.uk
 www.mollymaid.co.uk/chelmsford

MORE AFFORDABLE THAN YOU THINK!

MOLLY MAID

Six Bells Boreham

Traditional Good Quality Pub Food

Daily Specials • Childrens Menu • Baby Changing Facilities
 Childrens Play Area • New Garden Benches • Guest Ales
 Gluten Free Menu Available • Warm, Friendly Atmosphere

Tel: 01245 467232 Open 7 days a week
 Monday - Friday 12.00-3.00 • 18.00-23.00
 Saturday 12.00 - 23.00
 Sunday 12.00 - 22.00
 Food Served Monday - Friday 12.00-14.30 • 18.00-21.30
 Saturday 12.00 - 21.30 Sunday 12.00 - 20.30



GIANT BOOT SALE

EVERY SUNDAY & BANK HOLIDAY MONDAYS

7am - 2pm BUSIEST IN ESSEX!
BOREHAM GENERALS FARM

Entrance on roundabout where A12 meets A130
 Boreham turn-off Junction 19

Admission 50p, OAPs and Children FREE!
 No counterfeit goods allowed.
 Cars £12, Large Vans £15

Sellers arrive 6.30am to 10.00am
01371 876006 or 07779 948946

D&B SCAFFOLDING LIMITED

D&B Scaffolding offer a complete scaffolding service for commercial, industrial and domestic projects. It is a service that is competitively priced, fast, safe and reliable. If you are planning work that requires scaffolding then please contact us. We can visit your site and give you a competitive quote for your requirements.

D&B Scaffolding provide the best service to our customers through the experience and commitment of our staff.

Email: office@dbsscaffolding.co.uk
 Tel: 01245 362683 • Fax: 01245 362798

- Montpelier House • Blasford Hill • Little Waltham •
- Chelmsford • Essex • CM3 3PG •

constructa flex Kwikor H&S IPAF

CDL Denture Repairs...

...While You Wait

- New dentures by appointment
- Specialists in Crown & Bridge
- All Ceramic Crown & Bridges
- Cast Chrome Denture Repairs
- Dentures Cleaned and Polished
- Bleaching Systems
- Gum Shields
- Denture Relined
- Anti-Snoring Devices

Opening Hours:
 Mon-Thurs 8.00am-5.00pm
 Fri 8.00am-4pm

Chelmsford 01245 257 576 • 65 Victoria Road, Chelmsford, CM1 1PA
01245 287 535
www.denturerepairschelmsford.co.uk




Wishing patients a very speedy recovery from all at

PILLARHOUSE
 SELECTIVE SOLDERING SYSTEMS
www.pillarhouseinternational.com

Hospital Information

MAIN SWITCHBOARD TELEPHONE NUMBER
01245 326000

For more information, simply visit :
www.meht.nhs.uk

VISITING

Broomfield Hospital welcomes visitors and understands the important part they play in patient's recovery. Family and friends are able to visit patients every day. The hospital's visiting hours vary from ward to ward, so please contact the main switchboard on 01245 362000 for information.

Visitors are respectfully requested to limit visits to two people at any one time where possible, and that they stay for short periods of time using the chairs provided by the patient's bed. This helps prevent the ward area becoming too noisy and overcrowded for those patients who need rest. If children wish to visit, please check with the nurse in charge for advice about this.

To reduce the risk of infection spreading, alcohol gel is available at the entrance to the wards and outside each bay and side room. All visitors are asked to use this on entering and leaving the ward.

BY CAR

Car parking is available for visitors and patients. However it is in great demand and so between the hours of 9am and 2pm please leave in plenty of time as it is sometimes difficult to park. Alternatively, if

possible please consider alternative ways of getting to the hospital.

Sat Nav Location:

Hospital Post Code: CMI 7ET

CAR PARK CHARGES

15mins—3hrs £3.00

3—9hrs £4.00

5—24hrs £6.00

Weekly parking tickets are available at a reduced rate. Please visit the car park office to buy a long-stay ticket.

A pay and display car park is in operation and ticket machines are cash only and do not give change. There is a change machine by the Cashiers Office in the Atrium.

BY BUS

Please see below the buses and route numbers that provide a service to Broomfield Hospital:

70/70X

70: COLCHESTER - CHELMSFORD

Via Marks Tey, Coggeshall, Braintree, Gt Leighs

70X: COLCHESTER - CHELMSFORD

Via Braintree

Service 70 provides direct links to Little Waltham, Braintree, Coggeshall, Marks Tey and Colchester. Operates up to every 30 minutes.

42/42A1542

42: HOWE STREET - BROOMFIELD HOSPITAL - GALLEYWOOD. Via Town Centre, Tile Kiln

Best wishes to Hospital Radio and all staff, patients and volunteers from:

Petro Designs Limited

Unit 20, West Station Yard, Maldon

Tel: 01621 840055

office@petro-designs.co.uk

Architectural Consultants &
Chartered Building Surveyors

FAREWAY

CHELMSFORD TAXI SERVICE

01245 Call 24hrs a day
355555

For further information
on all our services please visit:
www.farewaytaxis.co.uk

We pride ourselves on our
professional, friendly
and **reliable** taxi service.



Are you divorcing or separating?
Are you worried about costly legal bills?
Did you know Legal Aid is still available
for mediation so it could be free?

Call us to see how we can help



Call 01245 49 22 00 www.essexmediation.co.uk

WaltersMedical

Specialist Critical Care

Walters Medical addresses everything it believes is important in a medical supply company; a dedicated range of quality products, at realistic prices, great customer service and a can do attitude.

Tel: 0845 6800 377
www.waltersmedical.co.uk

Weltech House, The Ridgeway, Welwyn Garden City, Herts AL7 2AA



BRYAN THE BEARING MAN

For all your Bearings, Belts and Industrial Product needs.

DEPOTS IN BASILDON AND CHELMSFORD
Please call or email us with your requirements.

TEL: 01268 28 66 33

Email: sales@bryanthebearingman.com

BROOKS

PAINTER & DECORATOR

INTERIOR & EXTERIOR
PROPERTY MAINTENANCE
RENOVATION WORK UNDERTAKEN
FREE ESTIMATES



CALL JEFF ON

DAYS 07774013504 EVES 01621 815078

EMAIL jeffbrosks36@yahoo.co.uk



THE GRIFFIN
64 MAIN ROAD
DANBURY
CHELMSFORD
ESSEX CM3 4DH
01245 699024



Download the **NEW** and **FREE**
'The Griffin Danbury App' from the App store

and you will instantly be informed when our great and exciting new offers and voucher codes are up for grabs. Instant information on new menus/events/promotions or just book a table. Download **TODAY** and be the first
www.griffindanbury.co.uk



*"And when it rains on your parade,
look up rather than down."*

*"Without the rain,
there would be no rainbow."*

Hospital Information

Continued

42A: STANSTED AIRPORT - BROOMFIELD HOSPITAL - GALLEYWOOD
Via Gt Dunmow, Town Centre, Tile Kiln
542: GREAT DUNMOW - BROOMFIELD HOSPITAL - CHELMSFORD
Services 42142A link Galleywood, Tile Kiln, Chelmsford Town Centre, Broomfield Road, Great Waltham, Dunmow and Stansted Airport every 15 minutes Monday to Saturday.

40

40: CHELMSFORD - GREAT BADDOW (BAE SYSTEMS)
Via Town Centre, Meadgate Estate, Readers Corner
Service 40 serves the Hospital every 30 minutes.

47

47: CHELMSFORD - BROOMFIELD HOSPITAL
Via Springfield Park, Chelmer Village, Sainsburys Store, North Springfield
Service 47 from Chelmer Village serves the Hospital every 30 minutes.

CASH POINTS, POST BOX AND PAY PHONES

Cash dispensers and post boxes are located inside entrances C and F. Pay phones are at various locations around the site.

HOSPEDIA

Hospedia is a service available to patients throughout the hospital offering free radio and a variety of TV packages which include free outcome calls to 01, 02 and 03 numbers for the duration of any

package bought. Also included in the package are free games and Internet access.

Card machines are located around the hospital, as well as Hospedia Representatives visiting wards daily to assist with any problems or to help purchase credit. They can also advise you on the best package for your stay. You can also pay by Debit or Credit card. Hospedia staff are on site Monday to Friday between 9am - 6.30pm and Saturdays between 9am - 2pm.

For more information, please visit www.hospedia.co.uk

CAFE

Pudding Wood Café
Just off main Hospital Street near X-Ray at destination number D140.

Opening hours:
7am — 3pm Monday to Friday

VENDING MACHINES

Zone A	A Breast clinic level 1 A&E department level 2 Emergency Assessment Unit level 2 Maternity waiting area level 4 Neonatal Unit waiting area level 4
Zone B	Level 2 Corridor
Zone C	Level 2 Corridor
Zone E	Level 1 between wards 1.1 and 1.2

AQUARIUS

-systems.co.uk

Proud to have designed and installed the Fire Detection System, Personal Attack System, Disabled Refuge Alarm System and Induction Loop Systems throughout **The Crystal Centre, Edward House, The Linden Centre and Christopher Unit at Broomfield Hospital**

Tel: 0800 0713 125 - Fax: 0800 0713 126
www.aquarius-systems.co.uk

Unit G2, Avonside Enterprise Park,
 New Broughton Road, Wiltshire SN12 8BT



Shirley Smith & Co.
 Accountants & Tax Advisers



A small friendly, local firm of accountants specialising in

- Preparation of personal tax returns
- Accounts preparation - sole traders, partnerships and limited companies
- Preparation of property rental income accounts
- Payroll and VAT returns

19 Blackwood Chine, South Woodham Ferrers, Essex CM3 5FZ.

T: 01245 322006 F: 01245 329731

E: info@shirleysmithco.co.uk W: www.shirleysmithco.co.uk

CHELMSFORD GOLF CLUB

Widford Road, Chelmsford CM2 9AP

01245 256483

www.chelmsfordgc.co.uk

office@chelmsfordgc.co.uk



Pleased to support Broomfield Hospital and the local community.



- 18 holes
- Practice area
- Chipping green
- Putting green
- Clubhouse
- Changing rooms/showers
- Buggy rentals
- Trolley rentals
- Professional
- Pro shop
- Bar and Restaurant



solargreen
 energy for life

Designers and Solar installers for 15 years

Energy from daylight is our planet's largest and most readily available source of energy. Solar energy can combat carbon emissions and provides a clean source of energy for life. Solar Green strives to make this happen. Solar Green is a UK leader in the engineering of Solar Energy systems for generating renewable and zero carbon energy to provide heat, electricity and hot water from Solar Photovoltaic and Solar Thermal technology.

Tel: 01245 400550 Email: info@solar-green.co.uk
www.solar-green.co.uk



H.E HILL + SON

1-3 THE STREET, HEYBRIDGE
 CM9 4NB.

- FURNITURE
- CARPETS
- ELECTRICAL GOODS

01621 853 364

D&R Entertainment

Playing you the best in
70's, 80's, 90's & up to date music

For more information and bookings please call

07538 011 945
07786 626 263



Balgores Low

Leading estate and letting agents

We are here to make your move as stress free and easy as possible, with our offices being staffed with professionally trained experts who are focused on delivering the highest level of customer care at all times.

Tel: 01245 492424 • www.balgoreslow.com
 Balgores Low, 2 Tindal Square, Chelmsford CMI 1EH
 Email: lettings@balgoreslow.com

FORDS OF ALTHORNE

Essex based coach & bus hire

Tel: 01621 740326 Email: info@fordscoaches.co.uk

Our vehicles travel the whole of the United Kingdom and the continent for many different companies, groups, schools and private customers. We also operate our own extensive Day Excursion program and Theatre trips. We pride ourselves on a reputation built up over many years, during which many thousands of satisfied customers have travelled with us again and again. Recommendation is our reward.

Community Action

Age Concern Information Line.....	0800 00 99 66
Child Death Helpline.....	0800 282986
ChildLine.....	0800 1111
Consumer Credit Counselling Service.....	0800 138 1111
Cruse Bereavement Care.....	0870 167 1677
DIAL U.K.....	01302 310123
Disabled Living Foundation Helpline.....	0845 130 9177
Drinkline.....	0800 917 8282
GamCare (for gamblers and those affected by problem gambling).....	0845 6000 133
Gingerbread Advice Line for Lone Parents.....	0800 018 4318
National Council for One Parent Families Lone Parent Helpline.....	0800 018 5026
National Debtline.....	0808 808 4000
National Drugs Helpline.....	0800 77 66 00
National Missing Persons Helpline.....	0500 700700
NHS Direct.....	0845 46 47
NSPCC Child Protection.....	0808 800 5000
Parentline Plus (practical help & information for parenting).....	0808 800 2222
Refuge Domestic Violence Helpline.....	0808 2000247
Relate.....	0845 4561310
Release (drugs and legal advice for users, families & friends).....	0207 7299904
Salvation Army Family Tracing Service.....	020 7367 4747
Samaritans.....	08457 90 90 90
Shelterline (help with housing problems).....	0808 800 4444
Victim Supportline.....	0845 30 30 900

Best wishes to staff, patients and volunteers.
You have a...

Heart of Gold



Best wishes to all patients and staff from all at

THURROCK FORK LIFT TRUCKS

Telephone: 01245 323256

43 King Edwards Road, South Woodham Ferrers, Chelmsford, Essex CM3 5PQ



Balloons & Party Direct

Beautiful balloon decorations for all occasions

01245 350600

251 Broomfield Road, Chelmsford

Essex CM1 4DP

www.balloonsandparty.co.uk

Christy Cooling Services

Air Conditioning & Refrigeration

Temple Wood Estate, Stock Road,

Chelmsford, Essex CM2 8LP

TEL: 01277 841500

Best wishes and get well soon from all at

ANDERSON & CO

Tarmac & Asphalt Contractor

Tel: 01245 445244

Mobile: 07714 287296

Best wishes to all staff, patients & volunteers from

CHICKS CATERING SERVICES

Professional catering for all occasions

Weddings - Dinners - Buffet

Telephone **Louise Collinson** on **01245 265570**

Best wishes from

Boucherne

Private Residence for the Elderly

Visitors always welcome

Tel: 01621 855429 • Email: boucherne@btinternet.com

www.boucherne.co.uk

LKG Daughters Plumbing & Heating Ltd

Tween Bends, Great Baddow CM2 7SY

01245 478111 and 07710 358347

Local Family Business Est. 1997

Gas Safe Engineers • City & Guilds Qualified

From a tap to a full bathroom installation

Best wishes to all staff, patients and volunteers

FREEMIX CONCRETE

Tel: 0845 894 32 36

Halls Farm, High Cross Lane, Little Canfield, Essex CM6 1TQ

www.freemixconcrete.co.uk

Email: sales@freemixconcrete.co.uk



01277 356 656

www.fastvanhire.co.uk

Chitral, Wyatts Green Road, Swallows Cross,
Doddinghurst, Essex CM15 0SS

CCS WINDSCREENS

AUTO FILM TINTING

SUN ROOF SPECIALISTS

Tel: 0800 770880

Navigation Road, Chelmsford

BAIRDS MALT LTD

Are very pleased to be supporting the
volunteers at Broomfield Hospital and
wish them the very best for 2014

Best wishes to staff, patients & volunteers from all at

DIAL A CARER

SERVICE

SPECIALIST CARE IN YOUR HOME

Tel: 01268 711044 • www.dialacarer.com



Best wishes to all staff, patients and volunteers from

GRAY AND SONS

Signals Lane, Galleywood, Chelmsford, Essex CM2 8RE

Tel: 01245 475181

www.grayandsons.co.uk

John Cooper & Sons

AN INDEPENDENT FAMILY BUSINESS SINCE 1962

AGA COOKER SUPPLIERS

74 Baddow Road, CHELMSFORD, Essex CM2 7PJ

Tel: 01245 261 909 • www.johncooperandsons.co.uk

Dream Doors

UK's premier kitchen facelift company

Visit our New Street Showroom or

Call 01245 358990

Best wishes to staff, patients

and volunteers,

from Anthony Brooks

Painter

Mob: 07799473135

Best wishes from

WIBBLERS BREWERY

Joyces Farm Building, Southminster Road,

Mayland CM3 6EB

01621 772044

Best wishes to all staff, patients and volunteers from

Mowden Hall Designs

Landscaping Specialist

20 Sauls Avenue, Witham, Essex CM8 1JP

01376 520746 or 07595 868944

www.mowdenhalldesigns.co.uk

Best wishes to all staff, patients & volunteers from all at

BELLAMY SURVEYING & CONSULTANCY SERVICES LTD

For all surveying & project management

Tel: 01245 478333 Mob: 07734 686776

Email: kevin@thebellamygroup.co.uk

GEOFFREYS TAXIS

Tel/Fax: 01621 855451

Mob: 07889 336563

Email: geoffrey.dell@outlook.com

Callaway

Insurance Group

www.callaways-web.co.uk

Business Insurance Specialists

01245 265 838

KNIGHT'S TAXIS

1A Guithavon Street, Witham

Tel: 01376 518383

Credit/debit cards accepted

ADCOCK

www.adcock.co.uk Email: **chelmsford@adcock.co.uk**

Telephone: **01245-398780**

Adcock Refrigeration & Air Conditioning Ltd, 5 Suffolk Drive,
Dukes Park Industrial Estate, Chelmsford, Essex CM2 6UN

Best wishes to all staff, patients and volunteers from

Clearcut Plaques & Engraving

Unit 2a-2b, Beehive Lane Works, Beehive Lane
Chelmsford, Essex CM2 9JY

Tel: 01245 352016

www.clearcutengraving.co.uk

Best wishes to staff, patients and volunteers.
You have a...

Heart of Gold



D.S.ENGINEERING (Witham) LTD

CNC TURNING & MILLING
SHEET METAL FABRICATION

Tel 01376 510294 Fax 01376 510183 info@dse-ltd.co.uk
7 Crittall Road, Witham, Essex CM8 3DR

Best wishes and get well soon from

M P Richardson Ltd

- Brick laying • Paving • General Building
- Patios and Driveways

Tel: 01376 503045

Elm Cottage Maldon Rd, Witham, CM8 1HN

MWRS

Ken Greenaway
Mobile Vehicle Servicing and Repairs

07860 515355

73 Fifth Avenue, Chelmsford, Essex CM1 4HB

BACP Accredited Counsellor

~ Christine Ketley ~

All types of problems welcome

Specialist in coming to terms with bereavement, illness or disability

British Association for Counselling & Psychotherapy

t: 01245 361299

a: Cornerways, South Street, Great Waltham, Chelmsford CM3 1DG

Best wishes from

MERLEWOOD GUEST HOUSE

299 Broomfield Road, Chelmsford, Essex

01245 258780



Unit 1 New Farm, The Street, Stow Maries,
Chelmsford CM3 6RS

Telephone 01621 856650 www.supreme-installations.co.uk

Best wishes to all staff, patients and volunteers from

Arvon Drain Cleaning

Local family company, competitive fixed rates

WWW.ARVONDRAINS.COM

01245 249499

THE STORES EST 1974

Antique Pine & Country Furniture in Great Waltham

Open Thursday to Saturday 10am-5pm and Sunday 11am-4pm

Telephone: 01245360277

NIGEL BRAND BUILDERS LTD

FOR ALL YOUR BUILDING NEEDS
BEST WISHES TO EVERYONE AT
BROOMFIELD & ST PETER'S

01376 552375 / 07714 695295

NICHOLAS WILLIAM LAMBORN

Mortgage Brokerage and Consultancy


We are delighted to support the volunteers
at Broomfield Hospital

nick@nicklamborn.freereserve.co.uk

Best wishes to all staff, patients and volunteers
Chelmsford Alexander Studio
Tel: 01245 608268 • 01245 268764
Email: sandra@chelmsfordalexander.co.uk
www.chelmsfordalexander.moonfruit.com

A J F
Landscape Gardens
5 Howard Close, Braintree, Essex CM7 3DT
TEL: 01376 528780 MOB: 07770 873374

Javalin Network Services Ltd
5 Grafton Place, Chelmsford CM2 6TG
Tel: 01245 463377
www.javalin.co.uk


Best Wishes to staff, patients and volunteers from Yelo Taxi
Unit 1 Goldcrest Industrial Estate, Driberg Way, Essex CM7 1NB
01376 33 44 55

KNIGHT MEATS LTD
are happy to support
The Volunteers at
Broomfield Hospital

PMS ELECTRICAL & DATA LTD
27 Skitts Hill, Braintree
Essex CM7 1AU
Tel: 01376 551181

Best wishes and get well soon from all at

Kershaw Doors
Tel: 07778 938920
*Little Stoneage Farm, Chatham Green,
Little Waltham CM3 3LB*

BECKWITH & SON (ENG) LTD
Sheet Metal Components
& Storage Equipment
Tel: 01245 224775
Fax: 01245 224364

Best wishes to staff, patients and volunteers from
BEAVER LODGE PRINTS LTD
For all your picture framing needs
01245 361066 • www.beaverlodgeprints.co.uk
*Lynderswood Farm, Lynderwood Lane
Braintree Essex CM77 8JT*

Best Wishes To Patients & Staff From
G&G GALLO ENTERPRISES LTD
01376 343188 • gandggallo@hotmail.co.uk
430 - 440 Avenue West, Skyline Business Park,
Braintree, Essex CM77 3AA

A Message of Support...

The Duckling Nursery

Writtle Infants School, Lodge Road, Chelmsford CM1 3HZ
Mrs S Homer - 07771 645270

~

DOORS & DOORS

Little Stonage Farm, Chatham Green, Braintree Rd, Chelmsford
01245 361201 • www.bobsdoors.co.uk

~

Witham Lodge Spinal Clinic

Do you want to reduce your back pain without surgery, pills, injections?
01376 500251 • 07841 389866 • www.back-pain-witham.co.uk

~

Practical Car & Van Rental

Unit 16, Finch Drive, Springfield Ind. Estate, Braintree CM7 2SF
01376 554188

~

Studio One Hairdressers

1 Anson Close, South Woodham Ferrers, Chelmsford CM3 5YJ
01245 325159

Forwardsread Ltd

2 Ongar Road Trading Estate, Great Dunmow, Essex CM6 1EU
01371 875951 • www.forwardsread.co.uk

~

Best wishes from Debbie and Lesley at

A Plus Caring Service
01376 465064

~

BDR Micro Instruments Ltd

Church Street, Great Baddow, Chelmsford CM2 7HY
01245 476777 • dianek@bdr-micro.co.uk

~

Traditional Woodcraft Kitchens

17 Brunwin Road, Rayne, Braintree, Essex CM77 6BU
01376 329794 • www.traditionalwoodcraft.co.uk

~

Holly House

220 New London Road
www.hollyhouse.uk.net

These advertisers would like to send you their best wishes

DISCLAIMER

This publication was produced by The Volunteer, a division of Smile Publishing Ltd. (Company No. 03709145) at no cost to Friends at Broomfield Hospital and Mid Essex Hospital Services NHS Trust. Production costs were met in full by the advertising the publication contains. Friends at Broomfield Hospital and Mid Essex Hospital Services NHS Trust do not make any recommendations as to the fitness of the advertisers appearing in this publication to carry out their services and no recommendations should be deemed to have been made.

Artwork and/or plates originated for use in this publication remain the property of Smile Publishing Limited and must not be reproduced without the permission of the publishers.

Friends at Broomfield Hospital Handbook is published by Smile Publishing Limited,
Holly House, 220-224 New London Road, Chelmsford, Essex CM2 9AE.
Tel: 0845 080 8700 © The Volunteer 2014 Issue 7

3rd degree burns
Sunday 8.17am

Give blood

Please don't leave it to someone else



For your nearest venue type your postcode into
blood.co.uk or call 0845 7 711 711

SEA CADETS CHELMSFORD



**ROYAL
MARINES
CADETS**
PART OF THE SEA CADETS



Parade Nights: Monday & Thursday 19.15 - 21.30

Tel: 01245 261151

Email: chelmsfordseacadets@gmail.com

Web: www.sea-cadets.org/chelmsford

Empire Walk, Chelmsford, Essex CM2 0DE

Registered
Charity
Number
274336

Your M&S SIMPLY FOOD

Main entrance,
Broomfield Hospital

your M&S

Open:

Mon - Fri 8.00am - 8.00pm

Sat - Sun 10.00am - 8.00pm



NEED TRANSPORT TO BROOMFIELD HOSPITAL?



To book travel, phone up to 90 mins in advance.

01621 874410



Broomfield Hospital arrive 0710* 0810 1010 1210 1410 ---- 1810 2010

Broomfield Hospital depart 0715* 0815* 1015* 1215* 1415 1615* 1815* 2015*

* Needs to be prebooked

Route serves: Dengie, Asheldham, Mayland, Maylandsea, Althorne, Cold Norton, Stow Maries, Purleigh, St Peters Hospital, Maldon, Heybridge, Heybridge Basin, Hatfield Peverel Station, Boreham (Sainsburys store), The Lawns, Springfield Medical Centre, Broomfield Hospital.

All National and Essex Concessionary Bus Passes Travel FREE!

Typical fare Maldon - Broomfield £12 Return

Season Tickets Available

Full Details Available at :- www.arrowtaxi.co.uk



Proud to support Broomfield Hospital

At Lidl, we strive to improve our environmental impact and take our social responsibility very seriously. With this in mind, we must ensure that we all play our part in ensuring our activities lead us ...

"On The Way To A Better Tomorrow!"



Your local stores:

Lidl Chelmsford, Princes Road, Chelmsford, Essex, CM2 9DG
OPEN: Monday to Saturday 8am - 8pm & Sunday 11am - 5pm

Lidl Braintree, Rayne Road, Braintree, CM7 2QS
OPEN: Monday to Saturday 8am - 9pm & Sunday 11am - 5pm



www.lidl.co.uk