

Friends at Broomfield Hospital

Handbook

FREE





Need a reliable Taxi Firm in Chelmsford? Look no further...

Call: 01245 600 155

OR Text/Call 07920 262 826

Always there when you Need A Taxi...

What do you look for when you book a taxi?
A local taxi company in Chelmsford which is reliable, efficient, fast and cost effective?



Taxi Services

Taxi Services we offer from Chelmsford

Airport transfer to all major airports
Competative prices all year round
We operate 24/7 - 365
Account Contracts Welcome
Discounts available
We accept all major credit cards

Airport

Going abroad? Important Meeting? Count on us

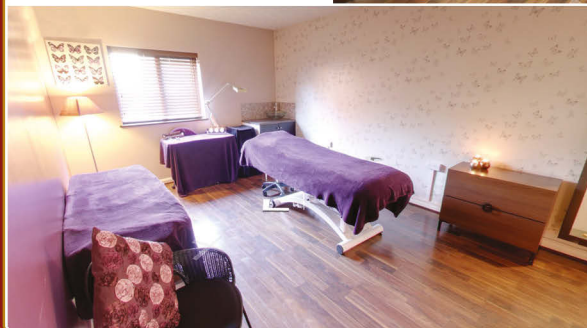
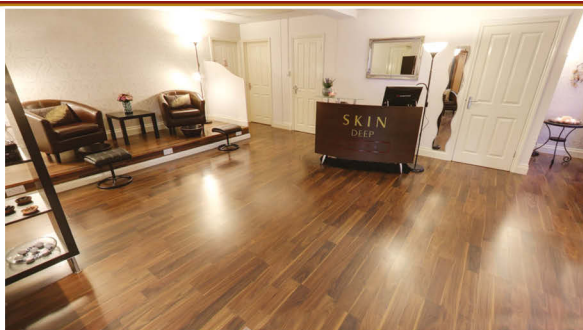
Stansted Airport from £32
Heathrow from £80
Gatwick North and South Terminals from £80
Luton Airport from £75
London City Airport from £52
Southend Airport from £38

SKIN DEEP MALDON
Holistic Therapies

*"Where Life Is Not
Stressful"*

01621 855252

www.skinddeepmaldon.co.uk



**SKIN
DEEP**

MALDON

16 Edwards Walk,
Maldon, Essex
CM9 5PS

CONTENTS

03	Chairman's Welcome	31	How You Can Help
05	Welcome from the Chairman Of Mid Essex Hospitals	33	Easy Steps to Make a Donation
07	Mid Essex Hospitals Charities Support Officer	35	Our Wonderful Volunteers
09	A Word From Our Treasurer	36	Sensory Gardens For Patients With Dementia
11	Presentations Of Equipment And Donations in 2016	39	Legacy Giving Remembering A Loved One
13	Donations	41	Our Free Library Trolley Service
15	Our Shops	43	The Dignity Project
19	Music Making On Care Of The Elderly Wards	45	Broomfield Hospital Site Plan
22	The Daily Sparkle	47	Friends At Christmas
25	Bladder Scanner Presentation	49	Multi Faith Centre
27	Ophthalmology Presentation	50	Members Annual Lunch
29	How We Help - On The Wards	53	Hospital Information
		62	History Of Broomfield Hospital
		73	Community Action

Registered charity no. 260377



Scan this code to view our magazine online or visit: www.chelmsford.smilepublishing.com



Bouygues Energies & Services FM is the Facilities Management provider for Broomfield Hospital in Chelmsford.

We employ engineers, electricians, plumbers and helpdesk staff at the hospital. For more information on careers within the company visit: www.bouygues-es.co.uk



**Bouygues
Energies &
Services FM**



Our energies for a **Better Life**










Mortgage
Advice Centre

CALL 01376 808200
info@mortgageadvicecentre.co.uk

We'll do all the hard work to find the right deal for you.

Mortgage Advice Centre is a Braintree based mortgage brokerage with access to a comprehensive panel of lenders from across the market.

Why should I use Mortgage Advice Centre?

-  Our advisors are fully qualified
-  We have a duty of care to you
-  Our advice is tailored to you and your situation
-  We're on your side - not the estate agent or lender's
-  We know which lenders can move swiftly if you need them to
-  We have access to lots of exclusive deals that you cannot get direct
-  It's not just about your mortgage. We will talk to you about protecting your mortgage and yourself should the worst happen

Mortgage Advice in Braintree:

- First Time Buyers
- Home Movers
- Buy to Let *
- Contractor mortgages
- Bridging loans *

Mortgage Protection :

- Life & Critical Illness cover
- Sickness and Unemployment cover
- Building and Contents cover
- Landlord Building and Contents cover

**YOUR HOME MAY BE REPOSSESSED IF YOU DO NOT
KEEP UP REPAYMENTS ON YOUR MORTGAGE**

Contact us today for a no obligation initial
consultation **01376 808 200**

Mortgage Advice Centre is a trade name of Just Mortgages Direct Ltd which is an appointed representative of Openwork Limited which is authorised and regulated by the Financial Conduct Authority.

* Some bridging loans and some buy to let mortgages are not regulated by the Financial Conduct Authority

2

Thank you to all the advertisers

CHAIRMAN'S WELCOME

Good healthcare in hospital is something we all want for our loved ones and ourselves. When that care can be backed up and strengthened by volunteers dedicated to helping patients and their families, then it can be second to none.

Broomfield Hospital's staff always aim to give a high level of expertise and empathy and their good work is given an extra dimension by the Friends at Broomfield Hospital, a group of people who fundraise to provide extra equipment and facilities at the hospital to help patients and their families.

I am proud to be the Chairman of the Friends and I am delighted that the money raised by our volunteers is making such a difference across many wards and departments at Broomfield Hospital.

The vast amount of medical equipment, the extra comforts for patients, visitors and staff and the ongoing support provided by the Friends is of such enormous value.

Over the years the equipment purchased has often been cutting edge and has helped many services develop when budgets were severely curtailed. We are able to help when needed and that is what we are here for, to support Broomfield Hospital, for the benefit of patients, visitors and staff.



Our volunteers run and staff our two shops at the hospital, take the trolleys around the wards, including the library trolley and present a friendly face to patients, staff and visitors.

The time and effort given on a daily basis is as vital now as it was 60 years ago when the group was first set up as the hospitals League of Friends. So, I would like to thank all of our volunteers, the staff at Broomfield Hospital and all those who support the Friends, for working together to make such a positive impact.

Thank you to the advertisers without whom this magazine would not be possible.

For more information about our work please visit our website www.fabh.org

Alison Douglas
Chairman - Friends at Broomfield Hospital



THE NEW DEANERY CARE HOME



Every life sings

You can relax because our **multi-award winning team** is here to take care of you in luxurious surroundings, 24 hours a day.

- High staffing levels
- Award winning for leadership, nutrition and hydration, housekeeping, and employment practices
- Rated by the Care Quality Commission as **'outstanding'** for leadership and **'good'** in all other aspects covering care, safety, effectiveness and responsiveness
- Peace of mind thanks to our **All-inclusive** packages

To find out more or to arrange a visit please call us on **01376 558 555** or visit our website **www.thenewdeanery.co.uk**

The New Deanery
Deanery Hill, Braintree,
Essex, CM7 5SR



WELCOME FROM THE CHAIRMAN OF MID ESSEX HOSPITALS

Mid Essex Hospital Services
NHS Trust



I would like to thank the Friends for extending the opportunity for me to contribute to this publication, in which I wish to share my deepest gratitude for their commitment to our hospital.

Their kindness, generosity and team spirit is a lynchpin of daily life at our hospital, for patients, staff and visitors. Their presence is ubiquitous: from the two Friends shops to the equipment which they have funded to improve the care that we provide. Since I was appointed as Trust chairman in 2010, I have seen the vast difference that their volunteers make to the organisation. Whether they are assisting in the shops, serving patients from the trolley, or running

the library service, they are at all times friendly, courteous and professional.

Our team here at Mid Essex Hospital Services NHS Trust are extremely grateful to the Friends for their financial support and practical help, allowing them to offer the very best clinical service. They have made numerous generous donations, including in recent times to the ophthalmology department and the dementia-friendly garden at Braxted Ward. In addition, they are always keen to support us with events, such as the Christmas ward decoration competition. Furthermore, the Friends support the patient experience team and the chaplaincy service, collaborating with our staff to enhance the experience of patients, relatives and visitors.

On behalf of all of the Trust, I would like to express our sincerest appreciation to the Friends for the assistance they offer us – they are truly an integral and highly valued asset to our hospital. We look forward to continuing our strong relationship with them in the future and are privileged to benefit from their compassion and dedication.

Professor Sheila Salmon
Trust Chairman
Mid Essex Hospital Services NHS Trust

How are YOUR finances stacking up?

One in three people entitled to help with their rent and Council Tax don't claim it.

With our new online calculator and application form, you can find out how much help you could receive in minutes!

Visit the Housing & Benefits section at www.chelmsford.gov.uk

or call us on: 01245 606400

To speak to one of our friendly advisors



Goodleigh
Dental Practice

NHS
& Private

OFFERING A FULL RANGE OF TREATMENTS COMPREHENSIVE MODERN FAMILY CLINIC

- General Dentistry • Cosmetic Dentistry
- Hygienist Services • Teeth Straightening
- 6 Month Smile • Invisalign • Teeth Whitening
- Dental Implants • Oral Surgery
- Periodontal & Endodontic Treatments

AND NOW INTRODUCING WRINKLE REDUCTION AND DERMAL FILLER TREATMENTS

*We have 4 ground floor surgeries for disabled access
and we also cater for nervous patients.*

OPEN
MON-FRI 08.30AM - 5.00PM
SAT 08.30AM - 1.00PM



Call us on 01245 257181

We are 2 mins from Train & Bus Station

41 Broomfield Road, Chelmsford, Essex, CM1 1SY

email: goodleighdental@btconnect.com

www.goodleighdental.co.uk



MID ESSEX HOSPITALS CHARITIES SUPPORT OFFICER

Mid Essex Hospital Services
NHS Trust



What a great pleasure it is to have this opportunity to say a massive **THANK YOU** to the Friends at Broomfield Hospital.

In my position as the Trust's Charities Support Officer, I know only too well that the success of fundraising relies entirely on those people who give up so much of their own time to help others. I continue to be amazed by the energy and commitment shown by all the volunteers. Each and every member is an inspiration to us all, from those who work in the shops, take around the daily trolley round and organise library service, to those members who sit on the committee. In this year's

magazine you will see examples of how the Friends have spread their generous donations over a broad range of services for maximum effect to enhance the patient experience. It has enabled our doctors and nurses to fund specialised medical equipment over and above what would normally be provided by the health service as well as supporting the patient experience team with the development of a brand new bedside booklet. Alongside these tremendous donations, the Friends provide our patients and visitors with a friendly and welcoming smile, which goes such a long way to make the time spent in hospital a little more bearable.

The Friends at Broomfield Hospital are most definitely an important and fundamental part of hospital life, and I look forward again to being of assistance to the committee with their plans for the future.

Yvonne Carter
Charities Support Officer



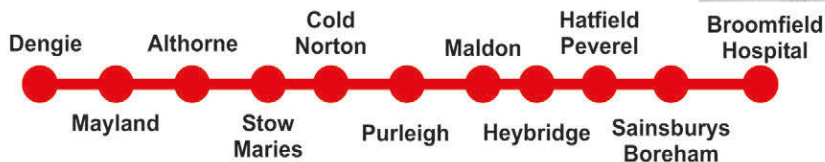
Friends at Broomfield Hospital

NEED TRANSPORT TO BROOMFIELD HOSPITAL?



To book travel, phone up to 90 mins in advance.

01621 874410



Broomfield Hospital arrive 0710* 0810 1010 1210 1410 ---- 1810 2010

Broomfield Hospital depart 0715* 0815* 1015* 1215* 1415 1615* 1815* 2015*

* Needs to prebooked

Route serves: Dengie, Asheldham, Mayland, Maylandsea, Althorne, Cold Norton, Stow Maries, Purleigh, St Peters Hospital, Maldon, Heybridge, Heybridge Basin, Hatfield Peverel Station, Boreham (Sainsburys store), The Lawns, Springfield Medical Centre, Broomfield Hospital.

All National and Essex Concessionary Bus Passes Travel FREE!

Typical fare Maldon - Broomfield £12 Return

Season Tickets Available

Full Details Available at :- www.arrowtaxi.co.uk



Sanctuary Care

'Keeping kindness at the heart of our care'

**Sanctuary Care
in Harwich and Chelmsford**

Residential *Dementia*

Call or visit us anytime

**Don Thomson House
Residential Care Home**

Harwich CO12 3TS

Tel: 01255 240 978

**Lyons Court
Residential Care Home**

Chelmsford CM1 6LB

Tel: 01245 451 254



www.sanctuary-care.co.uk

A WORD FROM OUR TREASURER



Broomfield Hospital has had the benefit of a Friends group for the past 60 years and Allan Hodson, treasurer for Friends at Broomfield Hospital, says that over that time around £1 million has been donated by the volunteers.

Allan, who can be seen on a regular basis wheeling the retail trolley around the wards said: "In the early days the donations were

of course much less than they are today, but they still made a big difference."

A former banker, Allan became a volunteer with the Friends at Broomfield Hospital when he retired.

He said: "About six months after I retired I found I could not accept the lack of contact with the public. One day I was in the hospital shop and saw an invitation to join the Friends group. I decided to volunteer for the trolley rounds, as this would give me some exercise.

"My role as treasurer is to keep the books and pay all the administration bills, plus draw the cheques to purchase equipment for the hospital which has been agreed by the committee, to bank all donations and profit from the shops and trolley rounds plus investing the funds to obtain maximum interest without risk.

"I enjoy being a volunteer on the trolley round as it gives me a chance to help the patients to buy items they need, often at a time when no relatives or friends are available. By having a few words with the patients I can perhaps bring a little pleasure into their day."

Allan Hodson
Treasurer

We are currently seeking experienced, caring HCA's and nurses to join our rapidly expanding team.

The Benefits:

✓ DBS refund *

✓ Holiday Pay *

✓ Loyalty Scheme

✓ Free uniform and training

✓ Refer a colleague bonus

✓ Work in a variety of settings

✓ Excellent pay, paid weekly

* Terms and Conditions apply. Please ask.

Want to join our team? You'll need:

- ✓ 6 months experience in the UK within the last 2 years
- ✓ x 2 professional references
- ✓ Undergo an enhanced DBS Check

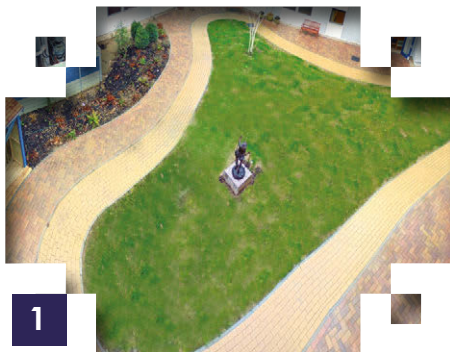
Register Today

☎ 01245 330335 | ✉ kpchelmsford@kareplus.co.uk

Kare Plus Chelmsford
Suite 1 & 2 Rochester House, 145 New London Road
Chelmsford CM2 0QT



PRESENTATION OF EQUIPMENT AND DONATIONS IN 2017



1



4



2



5



3

1. Dementia Garden
2. Dignity Clothing Project
3. Funding of Bereavement Room
4. Funding of Daily Sparkle
5. Ophthalmology Presentation

Tween Bends,
Great Baddow
CM2 7SY



LKG DAUGHTERS

PLUMBING & HEATING LTD
24 HR EMERGENCY SERVICE



- Boiler Renewals & Repairs
- Central Heating & Repairs
- Bathroom Suite Installations
- Pumps & Port Valves
- Taps, Ball Valves Etc.
- All Work Guaranteed

Local Family Business • Est. 1997 • Female & Male Engineers
"From a Tap to a Full Bathroom Installation"

01245 478111 07710 358347

www.lkgdaughtersplumbing.co.uk

Volunteer with us Speak to us today

Registered charity no 284670



**Farleigh
Hospice**

There are many ways you can volunteer
with Farleigh Hospice, including:

- Administrator
- Ambassador
- Gardener
- Catering Assistant
- Driver
- Complementary Therapist
- Health Care Assistant
- Photographer
- Receptionist
- Shop Assistant

MEET NEW FRIENDS

LEARN NEW SKILLS

BE PART OF A TEAM

GIVE SOMETHING BACK

www.farleighhospice.org/volunteering or call us on 01245 457324



Ayletts Residential Home for the Elderly

Main Road, Broomfield, Chelmsford, CM1 7LE

Call today

Telephone: 01245 441854

For most of our lives we enjoy the security, privacy, independence and comfort that comes from living in our own homes, but there may come a time when we need the help and care of others. This is when you can rely on the support of Croll Healthcare homes. We are a family company based in Essex and have been providing care for the elderly for over 20 years.

AYLETTS is a charming Georgian manor house, set in attractive gardens with views across the Chelmer valley. It is situated adjacent to Broomfield Hospital in the lively village of Broomfield near Chelmsford, Essex.

Ayletts opened in April 1996 following complete refurbishment to provide 25 spacious rooms, two of which are registered as double rooms, and all with private ensuite facilities.



Croll Group, Head Office, 1 Orsett Business Centre,
Stanford Road, Orsett, Essex RM16 3BX

www.crollgroup.co.uk

DONATIONS

Donations to Broomfield Hospital 2015

Mar	ECG machine	£4,500.00
	Labyrinth garden	£1,250.00
May	Children's ward ultrasound	£3,960.00
	Bereavement room and envelopes	£3,000.00
	Dementia garden	£2,000.00
Jul	Drinks for ward hot day	£54.00
	Toilet bags	£70.40
Oct	Plants for the dementia garden	£58.75
	Plants for the dementia garden	£1,293.26
	Bereavement area improvement project	£5,000.00
	Stroke unit visitors bed	£879.00
	Christmas tree and inpatient presents	£2,400.00
Dec	Ward decorations competition prizes	£200.00

Total £24,665.41

Donations to Broomfield Hospital 2016

Jan	Water supplied for mortuary visitors	£128.00
Mar	Dignity support clothing	£1,000.00
	A&E bladder scanner	£10,000.00
	Accuteme ultrasound for the Ophthalmology Clinic	£5,995.00
May	Daily Sparkle Newspaper	£1,000.00
	Gosfield Ward Pictures	£1,000.00
Jun	Shop refit expansion	£6,000.00
	Perometer	£10,000.00
Jul	Discharge lounge refurbishment	£10,448.80
	Music in the hospital ward scheme	£3,500.00
Aug	Toilet bags for Patients	£32.16
Sep	Garden 2 dementia areas	£10,000.00
Nov	Toilet bags for Patients	£69.31
Dec	Purchase of Christmas tree / Ward decorations competition	
	Prizes and Inpatient Christmas presents	£2334.10

Total £61,507.37

G. COLLINS & SONS

FUNERAL DIRECTORS LTD

*"Over 120 years, through five generations,
trust us to be there for you."*

BRAINTREE

01376 342266

30 RAYNE ROAD
CM7 2QH

GCSFD.UK

WHITE NOTLEY

01376 583750

4 THE STREET
CM8 1RH

**BISHOP
NICK**

**VISIT THE
BREWERY
SHOP**

**MINI-CASKS, POLYPINS,
GLASSWEAR, GIFTS AND
MORE AVAILABLE FROM
THE BREWERY SHOP**

**OPEN 10AM-4PM
MONDAY-FRIDAY
33 EAST STREET
BRAINTREE CM7 3JJ
T. 01376 349 605**

LINTON



**Pay monthly and
earn 4% interest on
all credit balances¹**



**Remotely monitor your
fuel level using your
smart phone or tablet**



**Competitively priced
supplier of domestic
heating oil**



**A supplier that treats
every customer as
an individual**

For Personal Service, Reliability and Value.

Call us today and experience the difference! 0345 600 6583

1. Interest rate subject to change. Credit subject to status. 2. Quote the code HP10. Applies to domestic kerosene only. Expires 31/8/17. Minimum delivery 500 litres. Not to be used in conjunction with any other offer.



**£10
OFF
YOUR FIRST
ORDER***

**Visit our NEW website
www.lintonfueloils.com**



Elmwood
Equestrian Centre

- **Tack Shop (Open Thursday till Sunday)**
- **Lessons (We Loan Ponies)**
- **Cafe**

Tel: 01621 783216

Elm Farm, Maldon Road, Burnham-On-Crouch, Essex, CM0 8NT

OUR SHOPS



Two shops are run on the Broomfield Hospital site by volunteers from the Friends.

Both shops give superb service with a smile, brightening up each day for customers. Volunteers with the Friends all believe in going the extra mile and there is many a tale of them giving help above and beyond the call of duty.

The bright and eye-catching **Friends2 Shop** is located in the busy new atrium at the main entrance to the hospital

and the other shop, Friends1, is in an established location near the entrance to the South Wing.

The goods on sale include sandwiches, newspapers and magazines, soft drinks, greeting cards and confectionary. Coffee, Tea and recently hot soup has also been added to the list, all at competitive prices.

It is open throughout the week, manned by volunteers and the shop is also a focal point for volunteers from the Friends who take stocked-up trolleys around the wards so patients can buy items they need.

Shop 1. Run by volunteers at the heart of Broomfield Hospital, is a hive of activity throughout the week. The shop has recently benefitted from a major re-vamp and has gone from strength to strength, making it a great asset to the hospital.

The shop brings in vital funds which in turn are donated by the Friends back to the hospital for medical equipment and other facilities for the benefit of patients and visitors. Barbara Coupe and Jenny Gillingham, long standing volunteers with the Friends and joint managers

—  —
THE LANES
—

**CHELMSFORD
CM3 3PY**

NOW OPEN

A Stunning Collection of
2, 3, 4 & 5 Bedroom Homes

Daily 10am - 5pm



0333 321 8915

THELANES@CROUDACEHOMES.CO.UK

Croudace
HOMES.CO.UK



Essex
Celebrant

Looking for the personal
touch to a ceremony?

Lost a loved one? Renewing your vows?

*Funerals *Weddings

*Baby namings *Renewal of Vows

*Civil partnerships

01245 381577

07826 339498

www.essexcelebrant.co.uk

info@essexcelebrant.co.uk



tmc

t r a n s f o r m e r
m a n u f a c t u r i n g
c o m p a n y l i m i t e d



Manufacturers of Transformers,
Distribution & Site Electrical
Equipment.

01621 843322

sales@tmctransformers.co.uk

www.tmctransformers.co.uk

OUR SHOPS

CONTINUED



of the shop, are dedicated to making it run smoothly and, with a team of enthusiastic volunteers, giving customers a sterling service.

The shop at the South entrance to the hospital also sells a wide range of goods including freshly made sandwiches delivered daily, fresh fruit, yoghurts, hot drinks, newspapers, magazines, greetings cards, confectionery, gifts and toiletries.

Barbara said : "Shop 1 is very popular, particularly at lunchtime when our sandwiches and soup sell very well. Our 3D greetings cards, which are very reasonably priced, are also much in demand. Because we are busy we could always do with more volunteers to join us."



A funeral plan gives you complete peace of mind for *you and your family...*

Like most things, funeral costs are rising all the time, but with our Pre-paid Funeral Plan options you pay for your funeral at today's prices. There is nothing more to pay, regardless of when the funeral takes place.



- ✓ For a stress-free future
- ✓ The best way to guard against inflation
- ✓ Pre-paid plans from your local independent co-operative
- ✓ Fully guaranteed - your money is safe!
- ✓ Spread the cost with low monthly instalment options

**£150
off***

Exclusive Member Offer...

Receive £150 off any new
Chelmsford Star Funeral Plan
purchased *Valid until 30th June 2018*

*Bring this advert with you. One offer per transaction. Cannot be used in conjunction with any other offer. No cash alternative.

Not a Member? Join today at...
www.chelmsfordstar.coop

Call to discuss further today on:

Braintree • 01376 551951
Chelmsford • 01245 353978
Danbury • 01245 221444
Gt. Baddow • 01245 268993
Gt. Dunmow • 01371 875542
Ingatestone • 01277 350988
Writtle • 01245 422622



CHELMSFORD STAR
CO-OPERATIVE
FUNERAL SERVICES

Over 80 years serving the community

www.chelmsfordstar.coop/funeral
Part of Chelmsford Star Co-operative Society Limited

MUSIC MAKING ON CARE OF THE ELDERLY WARDS



Since December 2016 Broomfield Hospital's Care of the Elderly wards have been receiving weekly visits from Pulse Arts CIC - professional musicians who specialise in making music in hospitals. On Danbury, Goldhanger, Baddow and Braxted wards they sensitively sing, play guitars and ukuleles, violin and soft percussion to calm and soothe patients.

There is scientific evidence that music can relieve pain and improve the wellbeing of patients, family members and staff.

Patients on these wards, some of whom have dementia, might not be interacting with others. But when the musicians arrive they often start to smile, talk, laugh and even sing and play themselves.

Staff have also been seen singing and dancing with patients; and some have shown off their musical talents by playing instruments.

"The impact the musicians have on the ward is huge, the atmosphere completely changes with big beaming smiles all around for patients and staff." Jonathan Wright – Patient Experience Manager

This pilot project is funded by Friends at Broomfield Hospital. For more information please visit www.pulsearts.co.uk





 64 BEDS

 RESIDENTIAL CARE

 NURSING CARE

 DEMENTIA CARE



LUXURY CARE HOME OPENING JANUARY 2018

Baycroft Great Baddow is our second luxury care home, providing expert 24-hour residential, nursing and dementia care.

We are creating homes that feel like home, where you can truly feel at ease. As much thought has been invested into the dining experience, the engaging social activities, the innovative technologies and the high quality facilities as the exemplary standards of care.

These elements combined create the comfortable and happy lifestyle you deserve.

We are dedicated to making a better every day for you and aligning our care and services to your needs.

MOLRAMS LANE, GREAT BADDOW, ESSEX CM2 7TL

 020 8821 5400

 info@baycroft.co.uk

 baycroft.co.uk


BAYCROFT
Care Homes & Senior Villages



KEEP ON WALKING TO THE FRIENDS AT BROOMFIELD SHOP

HOT DRINKS, SNACKS,
SWEETS, GIFTS, NEWSPAPERS
AND MUCH MORE, PLUS
ALL PROFITS SUPPORT
THE HOSPITAL



THE DAILY SPARKLE

INFORMATION & ENTERTAINMENT FOR THE ELDERLY



Mid Essex Hospital Services NHS Trust's Charity is launching a fundraising appeal for a second therapeutic garden for people with dementia.

Based in Baddow Ward, it will be designed to complement the care of people who have a diagnosis of dementia. Specialist choices will be made to create a peaceful environment from calming colour schemes to beautiful greenery and reminders of times gone by.

While £36,500 has already been raised for the project by the Trust's charity, the team

is seeking donations to meet its target and bring the garden to fruition. This follows the success of the forget-me-not garden - based in a courtyard in the Braxted Ward of Broomfield Hospital - which was opened in April after more than a year of hard work from keen volunteers. The project cost £70,000 in total, with contributions from The Friends at Broomfield Hospital (£15,000), V Festival (£10,000), and J W Steele & Sons Ltd (£3,000), with the remainder donated by the Trust's charity and other generous supporters.

The Trust's charity is also celebrating the

introduction of The Daily Sparkle to the wards – a newspaper which is designed to provide information and entertainment for the elderly and people with dementia. Featuring articles, quizzes and old news stories, its aim is to stimulate the mind and improve memory.

Funded by The Friends at Broomfield Hospital, the team at MEHT began distributing the title to patients in May after seeing how popular it was at Southend University Hospital NHS Trust.

Julie Green, Dementia Specialist, said: "The Daily Sparkle helps as a conversation starter – often it will make people with dementia feel much more confident. We have had some really positive feedback about it."

"The impact of the garden has been absolutely massive – access to an outside space is so important for everybody. The whole design is completely safe for patients so they don't have to have somebody with them when they go out. You just see them take a deep breath of fresh air and calm instantly. It has been one of the most positive things I have seen in dementia care."



"The first garden was about open space and freedom and it has a circular route. The second garden will be very different and will be divided into circular rooms. It will be calming and patients will be able to have the option of both gardens. I would love to show people what a difference it makes."

Barbara Coupe, Vice Chairman of The Friends at Broomfield Hospital, said:

"The forget-me-not garden is a place where elderly people can go outside in a calm environment with pictures up of things that they might recognise from the old days. We all thought it was a wonderful, worthwhile thing to do."

HOME CARE

*Providing excellent bespoke care and support
to people in their own homes*

**Friendly, reliable, highly skilled care workers,
providing home care services, including:**

- Personal Care
- Companionship
- Light Domestic Support
- Shopping Assistance
- GP & Hospital Care
- Dementia Care
- Home from Hospital Care

Services now operating within your local area!

For more information, contact Kare Plus Chelmsford / Colchester / Harlow

☎ **01245 330335**

✉ **chelmsfordhc@kareplus.co.uk**



BLADDER SCANNER PRESENTATION

Mid Essex Hospital Services
NHS Trust



Friends volunteers are shown how the bladder scanner kit works by Rayne Ward Sisters Eva and Jo.

Friends at Broomfield Hospital fund bladder scanner for hospital's vascular and urology ward.

Volunteers from the Friends at Broomfield Hospital visited the hospital's vascular and urology surgical ward to see how their fundraising is continuing to be put to excellent use.

They were welcomed onto the ward by Sisters Eva and Jo who were there to show

their appreciation to the Friends after they so generously funded the purchase of the new equipment. The Sisters also gave a demonstration of the new kit to the volunteers, giving them a chance to see how helpful it has been in the treatment of so many patients.

The Friends donated £5,500 to fund the new equipment and continue to support the Trust in so many ways and

with a huge number of projects.

The work of the Friends continues to provide a wealth of extra amenities for the benefit of patients, visitors and staff, and purchases medical equipment over and above what is normally provided by government funds.

Real ales, draught beer, cider and a good selection of spirits and good wine.
Home cooked pub grub with a roast served every Sunday.



Family area with garden and adult-only bar.

Live music, rock 'n' roll bingo, mediumship evenings, quiz nights, live Premiership football on Sky and BT Sport.

Business networking meetings, the last Monday of every month at 8pm. £10 per person, includes food.

For up-to-date information on event dates and times, or to view our menu, please visit our website
www.thebeehivepubgreatwaltham.co.uk

Follow us on Facebook, Twitter and Instagram
Barrack Lane, Great Waltham, Chelmsford CM3 1ES

01245 361724



The Beehive

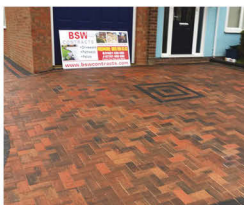
PUB & RESTAURANT

BSW

Your Local Company

CONTRACTS

Driveways - Pathways - Patios



- BLOCK PAVING
- PATIO SLABS
- TARMACADAM
- BRICKWORK
- TURFING
- FENCING
- GRAVELING
- DRAINAGE
- JET WASHING
- NATURAL STONE
- STEPS

**TRANSFORM YOUR PROPERTY
FOR LESS THAN YOU THINK!**

- ALL WORK GUARANTEED • NO DEPOSIT REQUIRED
- CALL US TODAY FOR A FREE QUOTE



01621 330 002 • 07701 090 060

0800 999 8383

4 Belvedere Place, Maldon CM9 6YJ

www.bswcontracts.com • info@bswcontracts.com



OPHTHALMOLOGY PRESENTATION

Mid Essex Hospital Services
NHS Trust



It can be used for patients with conditions such as diabetes, cataracts and bleeding of the retina.

Mr Ajay Sinha, Joint Clinical Lead and Retinal Consultant, thanked the Friends at Broomfield Hospital and said:

"If there has been bleeding in the eye we need to be able to look in and see what is happening."

"It has a lot of applications for us - it is a front line piece of kit and something that any modern eye department can't be without."

The Friends at Broomfield Hospital have kindly donated a £6,000 probe to the Ophthalmology Department. The probe allows clinicians to establish a clear, full view of the eye and replaces the older model which recently stopped functioning.

The Friends at Broomfield Hospital formally presented the equipment to the department on December 5th 2016.



Here for you every
hour of every day

Funeral
Services

East of
England
COOP

South Woodham Ferrers

01245 328307

Maldon

01621 858578

Burnham-on-Crouch

01621 786666

Witham

01376 520870

It's the little things that count

www.eastofengland.coop/funerals



Wood Automotive

Excellence in Mechanical Repairs Since 1994

Mechanical Automotive | Wood Automotive

Wood Automotive is a friendly, professional garage based in Great Waltham, Chelmsford. Whether your car needs new tyres, a routine service, an MOT or an air con repair... we can do it all, and at really competitive prices too.

We have over twenty years' mechanical repair experience, which is applied when dealing with every vehicle that comes into the garage, ensuring that each job is completed to the highest possible standards. And as a family run business we are committed to building on the strong reputation we already hold for delivering excellence in all aspects of our work.

From first contact, Wood Automotive strives to be approachable, knowledgeable and honest. We want our customers to receive a first class service, each and every time; after all, a good reputation is what keeps our business growing.

The mechanical services we offer include:

- MOT's • Vehicle Servicing • Tyre Replacement • Tyre Repair • Clutches
- Vehicle Diagnostics • Air Conditioning Repair • Welding ... And much more



Phone: 01245 361180 • www.woodautomotive.co.uk

Unit 1 Walthambury Farm, Pleshey Road, Great Waltham, Chelmsford CM3 1AZ

How We Help - On The Wards



Trolley Dollies Kate and Liz

Every morning at 7:45am you will find our early bird volunteers in **Shop 1**, loading up our two big blue trolley's. They are preparing to take them on to the wards and many departments in the hospital so that all patients, as well as staff and visitors, have a chance to buy items they need. The trolley's are filled with a great selection of daily papers, magazines, sweets, chocolates and drinks straight from the chilled cabinets in our shop. Tissues and toiletries, pens and puzzle books and anything else the volunteer can find space for are also included. There is a good selection of fresh sandwiches delivered daily and kept chilled by a cooling shelf and we also offer a wide range of bagged sweets including some of the old favourites such as sherbet lemons, mint creams, murray mints and many more. We provide the trolley service five days a week, all run by volunteers.

The distance around the whole hospital trolley round is about six miles, a very good way to keep fit. The rounds are split into two, Monday - Friday. It is a rewarding time at the end of the round, a real feel good factor. The patients who are bed-bound are really grateful, as are the staff whose time is limited; they like to buy goodies. Anyone who would like to help with the trolley service and keep fit will be very welcome.

To Volunteer for the Friends at Broomfield Hospital and for more information call **01245 443285** or visit our Join Us page. www.fabh.org

The Friends at Broomfield Hospital Shop 1,
Broomfield Hospital, Court Rd, Chelmsford,
Essex CM1 7ET



S J BLACKBOURN **GENERAL BUILDERS**

Experienced local building company

All interior and exterior building work

Extensions, garages

Kitchen & bathroom installations

Disabled works & adaptations

Property maintenance

Hard landscaping, garden walls, paving etc

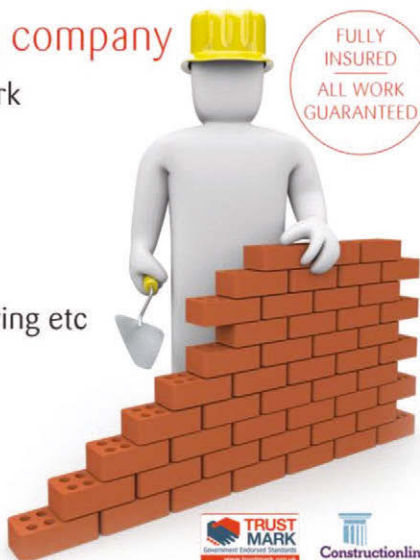
Please contact us for a free, no-obligation
consultation and estimate

Southlands, 288 Nine Ashes Road,
Blackmore, Essex CM4 0LA

Tel **01277 821022** | Mob **07956 372274**

Email **sjbbuilders@btinternet.com**

Please mention this Advert



PHONE: 01245 901 005

MOBILE: 07598 948 074

WEB: www.aldertreeservices.co.uk

23 Clyde Crescent, Chelmsford CM1 2LJ

Crown work



Hedge work



Tree removal



Stump grinding



As qualified tree surgeons, we provide a broad range of tree services to help you care for your trees and the grounds of your property. This includes crown work, tree removal, stump grinding, tree planting and hedge work.

We are your local tree surgery firm offering top-quality tree services for domestic and commercial clients in and around Essex.

Everything you want done with your trees and hedges will be tailored to your specific needs.

Also, all our arborists are NPTC and lantra qualified and we're covered by up to £5 million pounds worth of public liability insurance.

How You CAN HELP

Could you become a volunteer with the Friends at Broomfield Hospital and help make a difference to the lives of patients and their families, visitors and staff at the hospital?

If you have a few hours to spare you could be a very welcome part of our team, helping in one of our shops or with the trolley rounds on the wards.

To find out more information please call us on **01245 443285** between **(9-6pm)**

If you don't have time to be a volunteer but would still like to support our work then you can become an **Associate Member** of the Friends for only £10 a year by making a cheque out to Friends at Broomfield Hospital and send it to **SHOP 1, Broomfield Hospital, Chelmsford, Essex CM1 7WE.**

Please include your contact details and you will be sent a badge and newsletter to keep you in touch with the friends and to update you on our work.



Becoming a volunteer—please tick in the box to register your interest

Associate Member

☐

In the Shop

☐

Trolley Service

☐

Library Service

☐

Your commitment as a Friends volunteer could make a real difference, please complete your name & address in the section below and return it to the Friends Shop1, Broomfield Hospital, Chelmsford, Essex CM1 7WE

Name

Address.....

.....Post code Telephone

Friends at Broomfield Hospital (formerly the League of Friends) Registered Charity Number 260377



Swan Care Home

Residential Care Home

Dementia • Old Age • Alzheimer's Ages 65+

- Elderly/Dementia care for over 65 years
- Permanent and respite care offered
 - 18 single rooms plus one shared
 - Weekly GP visits
- Real time care technology used with access via a relatives gateway
- Residents outings and events organised
- Situated in the idyllic village of Tillingham
 - Visiting chiropodist and hairdresser
 - Access to well-being facilities
 - Warm friendly staff team

Leanne Smith (Registered Manager)



29 North Street, Tillingham CM0 7TR

Tel: 01621 779171

Fax: 01621 779091

Email: swan@rgcare.co.uk

Website: www.rgcare.co.uk



St Cedd's School

Independent co-educational school in Chelmsford for children aged 3-11



Nursery: The Perfect Start

EYFSP specialist teaching in an enabling and nurturing environment

Individual Pupil Progress

Children are challenged and explore their passions and strengths

Nurturing the Future

Grammar school and scholarship entry to independent schools at 11+

An International Dimension

Partner schools in India and Japan

A Centre of Excellence in Music

Excellent record of achievement in instrumental examinations
Chelmsford Cathedral Foundation School with choristers in the Cathedral Choir

Sporting Success

Experience the thrill of achievement, with extensive opportunities at local and national level

Breakfast Club from 07:30 / Term-Time Wrap-Around Care until 18:00

"We provide a secure and happy environment in which our children are encouraged to work and play with enthusiasm and commitment."

178a New London Road, Chelmsford CM2 0AR / www.stcedds.org.uk / info@stcedds.org.uk / 01245 392810

GALVIN

GREEN MAN

HOWE ST.

GREAT BRITISH PUB & DINING ROOM

Craft Ales

Traditional Pub Food

Sunday Roast

10% NHS Staff Discount



Galvin Green Man
Main Road, Howe Street
Essex CM3 1BG

www.galvingreenman.com

betty@galvinpubco.com - 01245 408 820

Please return this form to the Friends at Broomfield Shop1 at Broomfield Hospital, Chelmsford, Essex, CM1 7WE

Easy steps to make a donation

I would like to make a donation of £

Please make your donation payable to the Friends at Broomfield Hospital (or FaBH)

Name

Address

Postcode

Gift Aid Declaration

Under the Government's Gift Aid scheme, the Friends at Broomfield Hospital can recover the Income tax you pay (£10 to you becomes £12.82 to us), but you need to sign the declaration below:

I am a tax-payer and I wish the charity to reclaim tax on my donation:

Signed

Dated

Please note : I confirm I have paid or will pay an amount of Income Tax and/or Capital Gains Tax for the current tax year (6 April to 5 April) that is at least equal to the amount of tax that the Friends will reclaim on my gifts for the current tax year. I understand the charity will reclaim 25p of tax on every £1 that I have given.

Please notify the charity if you:

- # Want to cancel this declaration #Change your name or home address
- # No longer pay sufficient tax on your income and/or capital gains

If you pay Income Tax at the higher or additional rate and want to receive the additional tax relief due to you, you must include all your Gift Aid donations on your Self Assessment tax return or ask HM Revenue and Customs to adjust your tax code.



Quality Dental Care for all the family **ANTHONY CLOUGH**

BDS HONS LDS RCS ENG

New Patients Welcome

Telephone: 0844 8750039

“Sharrow Dental Surgery”

Moulsham Street, Chelmsford



**A comprehensive range of care
services tailor made for you**

All our employees are DBS checked

Unit 26, Baddow Park, West Hanningfield Road,
Great Baddow, Essex CM2 7SY

Telephone: **01245 477 042**

Out of Hours: **07453 022 343**

Email: **care@firststoprecruitment.com**

Web: **www.firststoprecruitment.com**

Personal Care

- Toileting, bathing and help dressing
- Help with getting up and going to bed

“Pop-in” Service

- Trips to see friends and relatives
- Sightseeing or leisure activities

Household duties

- Shopping, housework, laundry and ironing
- Meal preparation

Live in care

- 24 hour care and/or companionship

Community Support Workers

- Assist with medication
- Outings, activities and holidays

Night Staff

- Providing reassurance



SIMPLY HAIR AND BEAUTY



Simply Hair and Beauty is independently owned by
Laura Madgett and Holly Roe and is situated at the
Vineyards in Great Baddow, on the outskirts of
Chelmsford.

Professional and affordable, the salon is friendly and
welcoming. Simply Hair and Beauty is a relaxing hair
salon offering a wide variety of cuts, colours, restyles
and up dos.

15 The Vineyards, Great Baddow, Chelmsford
Essex CM2 7QS • Tel: 01245 472787

Email: **hello@simplyhairchelmsford.co.uk**

www.simplyhairchelmsford.co.uk



**10%
discount
off all hair
for NHS
staff**

OUR WONDERFUL VOLUNTEERS

An appeal is being made for more volunteers to join the welcoming and enthusiastic Friends at Broomfield Hospital.

People of any age and from all walks of life can be a volunteer with the Friends and it need not be a huge commitment, just a few hours on a regular basis will be greatly appreciated.

By becoming a volunteer with the Friends at Broomfield Hospital you will be part of a dedicated team making a vast difference to the lives of patients and visitors.

Our volunteers carry out various roles and they all have one thing in common, the satisfaction they gain from making a contribution and helping others. Whether it is on the wards, with our popular trolleys, or in our shops on the hospital site, our volunteers are a valued and well recognised part of the hospital scene.

Some volunteers are motivated by the benefits they or a loved one have had from treatment within the NHS, others want to spend their spare time in a constructive and positive way, giving something back to the community.

The Friends at Broomfield Hospital are dedicated to improving facilities for patients visitors and staff at Broomfield



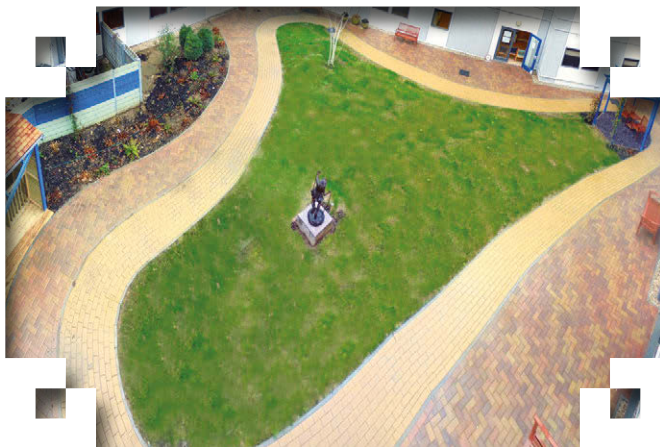
Marion and Carole

Hospital. The donations we have been able to give have funded a vast range of medical equipment and have helped pay for projects such as garden areas for patients and visitors.

The income from the shops and trolley service and any donations made to the Friends are channelled back in to the hospital, to help fund items requested by wards and departments.

If you would like to find out more about becoming a volunteer please call in to either of our shops on the hospital site or ring **01245 443285**.

SENSORY GARDENS FOR PATIENTS WITH DEMENTIA



Broomfield Hospital said: "The garden is already making a huge difference, helping patients with dementia have a more positive experience when they are in hospital. Getting outside into the fresh air gives them a break from being on the wards, lowers stress levels and it means that

A sensory garden specially designed for patients with dementia has been officially opened at Broomfield Hospital after a major 20-month project involving 60 volunteers, including the Friends at Broomfield Hospital.

The "forget-me-not" garden came to fruition thanks to the efforts of volunteers and was completely financed by charitable funds and donations.

A substantial contribution of £20,000 was made towards the garden project by the Friends at Broomfield Hospital as part of the organisation's ongoing aim to make life better at the hospital for patients, visitors and staff.

Fran Hodby, dementia specialist at

patients with dementia can be reminded of things they did in their younger days."

Patients are now able to enjoy relaxing walks around the garden, which includes a garden room, seating, a pergola and an evocative sculpture of a young girl skipping. The patients will also be able to enjoy activities including gardening groups and pet therapy.



***The winning design
by Michael Ekers***

The garden was designed by Michael Ekers who won a competition among Writtle College students to come up with a concept for the project. His design transformed a former uninviting courtyard area into a beautiful space, including a safe circular path and a soothing green and white palette of drought resistant and

shade tolerant plants. The "forget-me-not" garden project was led by members of Chelmsford's 41 Club part of the Round Table family.

A total of 20 tons of shingle had to be removed at the start of the project and volunteers from the 41 Club put in hundreds of hours of work ranging from project management to construction and planting. Alison Douglas, chairman of the Friends at Broomfield Hospital said: "We are delighted to have been able to make such a significant contribution towards such a worthwhile project. The end result is a credit to all the volunteers who put in such an immense amount of work and it is something that will be of lasting benefit for patients with dementia."



**Making Lives
Meaningful**



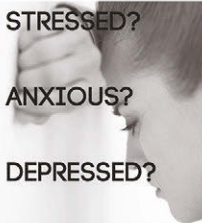
**WE CAN
HELP**

WE OFFER
COMPLEMENTARY
THERAPIES TO HELP
YOU GET THROUGH

STRESSED?

ANXIOUS?

DEPRESSED?



REFLEXOLOGY

MINDFULNESS

ACUPUNCTURE



OUR CLINICS IN
LONDON & ESSEX

Therapies are offered by
our Consultant
Psychiatrist, Dr Sarkhel
&
CNHC Registered, FHT
award winning
Reflexologist,
Malini Sarkhel.

CONTACT US TODAY
077 5343 0829

WWW.LIVINGMIND.CO.UK
INFO@LIVINGMIND.CO.UK

County Landscapes

Paving Specialists

Drives • Paths • Patios
Fencing • Turfing
Decking & Water Features
All Tree Work Undertaken
All Groundworks
Artificial Grass
Bespoke Ironwork
All work guaranteed
Portfolio & references
available on request

Office: 01245 630 822

Mobile: 07766 528 704

www.countylandscapesessex.co.uk

17 Widford Park Place, Chelmsford, Essex CM2 8TB



Andy's Aerials

Essex CM1 Your local aerial installer

Family-run business with
over 20 years of experience

Trading Standards
Approved Aerial Installer



Quality workmanship
at sensible prices

- » New aerial & satellite installations
- » Aerial & satellite repairs
- » Extra TV points
- » TV wall mounting
- » System design & install
- » Freesat & YouView installations

FreePhone **0800 77 97 047**
Mobile **07916 305 977**
Mobile Local Rate **0333 900 333 2**
Email andy@andysaerial.com
www.andysaerials.com

TRADITIONAL LONDON TAXI



LONDON TAXI - BASED IN CHELMSFORD

- THEATRE TRIPS TO/FROM LONDON
- AIRPORT RUNS
- WHEELCHAIR ACCESSIBLE

CALL 07583 789057

LEGACY GIVING REMEMBERING A LOVED ONE

Why are legacies so important to charities? Because with your gift the Friends at Broomfield Hospital can do so much more.

You don't have to be rich and famous to leave money to a charity when you die. Gifts left in Wills by people like you enables many of the charities we know and support today to survive.

So what better way to be remembered than by leaving a gift to the Friends at Broomfield Hospital in your Will.

Thanks to the generosity of people like you, the Friends have been able to donate even more money to make the time spent in hospital a little more bearable and helps doctors and nurses with the work they do by providing them with new and up-to-the-minute medical equipment. Your legacy gift will enable us to do even more in the future.

Legacy donations, big or small, help us to keep providing those all important extras and of course you can take care of your own family and friends before you think about making a donation to the Friends at Broomfield Hospital in your Will.

In essence it's the same as how you decide how much to donate ordinarily.

You would make sure you had taken care of yourself and your loved ones and then you'd choose to donate what's left over.

There are a few slightly different ways you can leave money to us in your Will:

- You can choose to leave a percentage of your estate known as residuary legacy
- You can leave us a set amount which is known as a pecuniary legacy (but bear in mind that inflation means that over time the real value of pecuniary gifts may change over time)
- Or you may choose to leave an item such as jewellery or property; this is known as specific legacy.

Your solicitor will be able to give you more advice about the different types of gift and we would encourage you to discuss any plans to leave a legacy to the Friends of Broomfield Hospital with your solicitor.

If you need any more details, simply contact Barbara Coupe on 01245 443285

For more information about 'give as you earn' donations and 'Just Giving' please refer to fabh.org

Registered charity number 260377

SAND DUNES

ENABLING THROUGH CARE

With over 30 years experience of providing independent living accommodation, your future is in safe hands at Sand Dunes.



- All inclusive charge with no hidden extras
- Laundry & cleaning service included
- Fully furnished rooms
- Communal facilities & social events
- Access to support if required
- Good accommodation & 3 hot meals a day

T. 01255 423 227 | E. jackie@sand-dunes.co.uk
6-8 Colne Rd, Clacton-on-Sea CO15 1PX



Tiptree Meals Ltd

Meals for the elderly

**PART
TIME
DELIVERY
DRIVERS
SOUGHT!**
Call for details!



Freshly prepared hot, cold or frozen meals delivered daily direct to your door.

All food cooked to order 365 days a year by professional people. Hygiene certificate grade 5.

We also offer a housework service, anything from one hour to a full house clean and can include washing, ironing and shopping.

All our services are provided by friendly, reliable local people at affordable prices.

We are a family business, established for over 32 years.

For a totally personal service please call us now on

01621 816963

or email kieron.shave@sky.com

www.tiptree-meals.co.uk



Gary K. Steggall



- + Tree Surgery
- + Reductions
- + Felling
- + Hedge Trimming
- + Seasoned Logs
- + Site Clearance
- + Free Estimates
- + Fully Insured
- + £5m Public Liability

07971 696375

01245 496758

garysteggall499@btinternet.com



www.yelotaxi.co.uk

Taxis to ALL UK Destinations

Airport & Seaport Transfers From £27



Pay In-Car or Securely Online at yelotaxi.co.uk

VISA

Book Online:
yelotaxi.co.uk

Book By Phone:
01376 33 44 55

Our iPhone App:



Our Android App:



The Official Chelmsford City Racecourse Taxi Service

OUR FREE LIBRARY TROLLEY SERVICE

As well as the Ward Trolley round we also have our free Library Trolley Service where our volunteers visit the wards and departments throughout the hospital bringing a friendly face and a chat to patients. The service runs on Tuesday and Thursday mornings and on the trolley is a wide selection of books for patients to choose from.

Roger and Marion Gardiner are two of our current library volunteers, having been introduced to volunteering through a close relative.

Roger retired after 25 years as an Engineer Surveyor/Risk Assessor for a large insurance company. Marion has had various part time roles over the years but ceased working a couple of years ago. They both found they had some spare time and volunteering has been the answer, it has given them the perfect opportunity to put something back into the community.

"A large part of taking the library trolley to the wards is a little light conversation with certain patients who perhaps don't receive many visitors and this is certainly no hardship for me, I enjoy getting into conversations with people."

"Volunteering suits my nature as I am very much a people person. Roger's love of



Roger and Marion

reading and being able to help choose a suitable book for a patient's reading taste makes this an ideal volunteering role for him" says Marion.

"As yet no-one has told me that the item I chose for them was rubbish, but perhaps that is because people are just being polite" says Roger.

If you would like to join our friendly team of Trolley Library Volunteers or donate some good quality paper back books, please do contact us on:

01245 443285

Glendale

residential care home

Glendale is an independent, friendly care home in Felsted, Essex. We are CQC and dementia registered for 20, providing both short and long term care. We have recently completed a large extension and we have brand new ground floor rooms with en-suite facilities and garden views available immediately. Our home is set in a beautiful village just a short walk away from local shops and restaurants.



For further information please contact the manager, Julie on 01371 820453 or email: info@glendaleresidential.co.uk web: www.glendaleresidential.co.uk



The Rose & Crown



We offer a warm, friendly welcome, traditional ales including the local 'Bishop Nick' beers, a real log fire (in the winter!) and a varied menu with traditional country products, fresh seafood and Italian specials...

01245 360359

www.roseandcrowngreatwaltham.com

Minnows End Chelmsford Road Great Waltham, CM3 1AG



Chelmer Footcare

Stubborn Verruca?

- Pioneering new Microwave technology
- 94% success rate with 3 treatments or less
- 76% overall success rate
- Treatment times in seconds
- Virtually no discomfort
- No dressings required
- No need to keep the foot dry

swift



01245 269069

www.chelmerfootcare.co.uk

2 Beehive Lane, Great Baddow, Chelmsford CM2 9SX

Yourstyle Services Ltd.

Help with everyday life

- Your home - help with housework, laundry, ironing, cooking and gardening
- Your leisure - help with shopping, hobbies and outings
- Getting organised - help with letters, appointments and bills
- Your health - help following illness or post operative or just some companionship
- Your pets - help with exercise, care and vet appointments
- Your holidays - we can help you plan, book and accompany you

Help from one hour a week to 24 hours a day

01245 426266

www.yourstyleservices.co.uk

THE DIGNITY PROJECT

Fashion comes to our Dignity team all thanks to a £1000 donation from the Friends.

Angela Wade (Research/Development and Dignity lead) has been able to buy much needed clothing for our patients who find themselves in hospital either as an emergency or who may not have family or friends to bring items in for them.

Angela said "The Dignity Project team helps provide that extra help for people who do not have suitable attire while staying here at Broomfield Hospital, and we are immensely grateful to the Friends

at Broomfield Hospital for supporting this important initiative".

Friends volunteers Sandra and Laura joined Angela, Audrey Judd (Domestic Team Leader) and Leanne Lawrence (Hotel Services Administrator) recently to see the wonderful selection of clothes they have purchased and to learn how the items are distributed around the hospital to those in need.

Our charity at Broomfield is forever grateful for the continuing support we receive from the Friends and their volunteers.





ESSEX ARB

TOTAL TREE SOLUTIONS

essexarb.co.uk

ESSEX
BUSINESS
AWARDS
2016
WINNER



Essex Arb. Ltd.
is an Arb. Assoc.

Approved
Contractor.

We are also
Council and
Trading Standards
Approved.

This means we achieve the
highest standards of best practice
in finished work, customer care and
health & safety.

We offer commercial and private clients a
personal service designed to meet your
needs: from hedge trimming to 24 hour
emergency cover.



- *All Aspects of Tree Work Undertaken*
- *Tree / Hedge Planting*
- *Woodland Management*
- *Stump Grinding*
- *Fully Insured & Qualified*
- *£10m Public Liability*
- *Free No obligation Quotation & Advice*
- *Supplier of Seasoned Hardwood Logs*



ESSEX ARBORICULTURE LTD

Woodham Ferrers, Essex

Call: 01245 329622 • 01621 778699 Email: info@essexarb.co.uk



NEWELL

PROPERTY DEVELOPMENT

Based in the centre of Chelmsford, Essex and with over 25 years of experience, Newell Properties Developments Ltd is a local family business primarily dealing with purchase/acquisition of sites with long term planning issues, factory break-ups and the remediation of brown field sites for change of use from commercial into residential land.

Commercial

We specialise in the refurbishment of offices in the Home Counties. We take great pride in internal design and exterior finish to ensure the finished product reflects modern office needs. We have been refurbishing offices for the last 15 years and believe we have a great understanding of what the modern office needs.

Residential

On acquiring sites for residential use we mainly work on a sole basis but we will consider either a joint venture or consortium project. We try and maximise the site to its full potential working very closely with town planners to create a master plan which will be acceptable to the local authority.

Contact tel: 01245 252111
email: ts@npdltd.co.uk








B.R.P.H LTD

Brad Rogers Plumbing & Heating LTD

specialise in domestic and commercial plumbing and heating services. We pride ourselves on our honesty and reliability and you will always be met with outstanding customer service and quality of work.

We are experts in our field and are all fully qualified to work with Natural gas, LPG and Oil. We are registered with both Gas Safe and OFTEC so you can be sure your engineer is highly trained.



Office - 01621 778215 • Mobile - 07828 842277
Website: www.bradrogersplumbing.co.uk

BROOMFIELD HOSPITAL SITE PLAN

Mid Essex Hospital Services
NHS Trust





**Same Day
Appointments
Convenient
Flexible
Available**

Comprehensive GP service provided
on a pay-as-you-go basis
Appointments till 8pm readily available week days
Full medical check ups
Complete range of vaccines available for travel, flu
and shingles prevention.

**Dr Sibel Peck, Dr Anne Squire, Dr
Judith Pluck, Dr Jo Josson McConnell
& Dr Justin Barkham**

01245 234134

Private GP Services, Springfield Hospital, Lawn
Lane, Chelmsford, Essex, CM1 7GU
www.privategpservices.co.uk



Sovereign

WILLS & ESTATE PLANNING

Friendly Essex based firm offering a
professional Will and Lasting Power of
Attorney service with free consultation in
the comfort and privacy of your home.

Wills, Trusts, Inheritance Tax Planning

Lasting Power of Attorney

Court of Protection

Probate

For any work undertaken,
Sovereign will make a donation
to Age UK Essex

For further information please contact
Sue on 01245 460383 / 07824554908

MEAD COLLECTIONS MAN IN A VAN SERVICE

All collections and removals

Flat, house & office
moves plus
clearances



Contact today on
07800 848633
kevinsemead@hotmail.com



ATP HEATING SERVICES LTD

- Oil Tank Replacement Service
- Oil Boiler Servicing & Repairs
- Oil Aga Servicing & Repairs
- Plastic & Metal Oil Tanks (Supplied & Installed)
- Oil Boiler Installations
- Chimney & Flue Sweeping
- Oil Tank Maintenance

For full service information &
free quotation please contact us on:

Tel: 01245 422355

www.atpheatingservices.co.uk

Unit 1, Reeds Farm Estate, Roxwell Road
Whittle, Chelmsford, Essex CM1 3ST



FRIENDS AT CHRISTMAS

For over 20 years the Friends have been working together with the Trust's own Charitable Office to ensure that Christmas is a special time at Broomfield.

Every year the Friends sponsor the outside Christmas tree that stands like a beacon at the top of Hospital Approach, they are on hand with mulled (non alcoholic) wine and mince pies at the dedication of the internal Christmas tree in the atrium. They provide the prizes for the annual Ward

Decoration Competition, which is a very hard fought event, and provide grants to the wards to ensure that all those patients that are unlucky enough to be in hospital over Christmas receive a small gift and extra seasonal nibbles.

The two shops are filled with lovely Christmas merchandise to try and make sure our hard working staff have an opportunity to purchase gifts when it is difficult for them to get to the shops.





M1 HEATING & PLUMBING

With over 20 years experience providing a reliable, trustworthy service in Chelmsford and the surrounding areas, our Gas Safe Registered engineers can offer you;

- New boiler installations
- Full central heating systems
- Sealed systems
- Kitchen and bathroom installations
- Underfloor
- Garden taps

Call us on:
07966 193159 | 01992 610863

POWELL SYSTEMS



Best wishes to all
staff, patients
and volunteers

Powell System Engineering is a Building Services Controls Company specialising in the Building Energy Management Systems using a product called Trend. The company works for key blue chip companies, the government, hospitals, schools and many large contractors. PSE takes advantage of new technology to assist clients in becoming more environmentally and energy efficient.

01689 879000
www.powell-systems.co.uk

Unit 2, Fitzroy Business Park
Sandy Lane, Sidcup, Kent DA14 5NL



K & H MEDICAL

Medical and Industrial Installations and Maintenance of:

- Gas Distribution Systems • Manifolds
- Gas Scavenging Systems
- Electrical Installations • Vacuum Systems
- Alarm Systems
- Patient Environment Installations
- Medical & Surgical Air Systems

K & H Medical Ltd are one of the leading installers of medical and laboratory gases in the UK and are now celebrating over 30 years as a market leader in this industry.

K & H Medical Ltd
Unit 25 M11 Business Link, Parsonage Lane,
Stansted, Essex CM24 8GF
Tel: 01279 757835 Fax: 01279 812894
Email: admin@khmedical.co.uk
www.khmedical.co.uk




SkinSENSE
GP CLINIC
Refresh, Rejuvenate & Reinvent



Independent GP services and Cosmetic clinic on a pay as you go basis.

Offering a range of treatments including:

- GP Consultation
- Full Health checkups
- Vaccinations
- Family Planning
- Mole and Skin tag removals
- Weight loss treatments
- IV Nutrition therapy
- Non Surgical Cosmetic procedures
- Acne treatments
- Lip & Cheek fillers
- Excessive sweating, to mention a few

At Skin Sense GP Clinic we understand that cosmetic treatments are as much about helping you achieve greater self-confidence as about beauty or looking younger. Book appointments at your convenience, same day and late appointments available.
Dr Soumya Lanka & Dr Raghu Lanka.

T: 01245 206106 M: 07954 303152
E: info@skinsensegpclinic.com
W: www.skinsensegpclinic.com

MULTI FAITH CENTRE

Mid Essex Hospital Services
NHS Trust



How Do You Contact Us?

A 24/7 on-call chaplain can be paged, via the switchboard, for advice or a visit. Otherwise we're on site Monday - Friday 8.30am - 4.30pm and Sunday 9am - noon. Our referral line is x5244 with voicemail if we're out.

Where is the Faith Centre?

The Faith Centre and Chaplaincy offices are situated at location A209. It is open 24 hours for anyone to come for quiet space and prayer. An Islamic Ablutions room is available 24 hours and screens and prayer mats are in the Faith Room. Other religious resources are available on request. The Spiritual Care and Chaplaincy Department is pleased to provide a calendar of high holy days and celebrations from different faith communities. If you or your faith community wish to hold a service on one of these significant days, please contact

the Chaplaincy Department in order to reserve the Faith Centre.

Regular services in the Faith Centre are as follows:

Monday - Thursday

7.30am: Hindu Meditation

Tuesdays

12.15pm -12.45pm: Holy Communion
(Church of England or Free Church)

2nd **Friday** of each month

12.15 -12.45pm: Roman Catholic Mass

Wednesdays 8.00am: Christian Meditation

Fridays 7:00am: Hindu Meditation

Fridays 1.15 -1.45pm: Jum'ah prayers
(Ablutions room available)

Other **weekdays** 12.15pm: Short service
of Christian prayers and reflections

Sundays: No services in Faith Centre
Holy Communion (Roman Catholic,
Church of England and Free Church)
or prayers are brought to the bedside
by our Eucharistic Ministers.



MEMBERS ANNUAL LUNCH





Basking Babies®

holistic health & happiness

Award winning baby massage classes
in Chelmsford, Danbury, Maldon & South Woodham Ferrers.

There are so many benefits of baby massage to both parent and baby, backed up by significant research. We offer a range of classes, both individual and group, which are always relaxing, friendly and non-judgemental.

EXPERIENCE THE MAGIC OF MASSAGE

For Chelmsford, Danbury, Maldon & South Woodham Ferrers classes contact Claire
claire@baskingbabies.co.uk • 07739 315 876



FAREWAY TAXIS LTD

WHY NOT TRY OUR NEW APP!!

IT'S QUICKER

IT'S EASIER

& ITS **BANGING!**



01245 355555



Foot Health Professional

Qualified and friendly treatment in your own home



Kate Felton MCFHP MAFHP

to book an appointment call

01245 223328 or 07759 119887

kathryn_felton@yahoo.co.uk

Appointments available weekdays, weekends and evenings

Diabetic foot health, corns, calluses, verrucas, and general foot care



SJ Tidd Roofing & Building is a well established, trustworthy, reliable and professional family company. We serve Chelmsford, Brentwood, and all surrounding areas.

- New Roofs & Re-Roofs • Roof Repairs • Chimney Work • Lead Work
- Lead Roofs • Fascias, soffits & Guttering • Flat Roofs • Felt Roofs • Lead Roofs
- Moss Removal • Roof Coating • Driveways • Walls • All General Building

T: 01268 558 301 • M: 07876 011 650

www.sjtiddroofingandbuilding.co.uk • stidd1990@hotmail.co.uk



Smile!
PRINT • ONLINE • MOBILE

Like us on Facebook

www.facebook.com/smilepublishingltd

HOSPITAL INFORMATION

Mid Essex Hospital Services
NHS Trust



Contacting Broomfield Hospital

Main Switchboard Telephone Number
01245 362000

For more information and a range of
telephone numbers, simply visit:

www.meht.nhs.uk

Visiting Broomfield Hospital

Visiting

Broomfield Hospital welcomes visitors and understands the important part they play in patient's recovery. Family and friends are able to visit patients every day. The hospital's visiting hours vary from ward to ward, so please contact the main switchboard or website for information.

Visitors are respectfully requested to limited visits to two people at any one time where possible, and that they stay for short periods of time using the chairs provided by the patient's bed. This helps prevent the ward area becoming too noisy and overcrowded for those patients who need rest. If children wish to visit, please check with the nurse in charge for advice about this.

To reduce the risk of infection spreading, alcohol gel is available at the entrance to the wards and at each bedside. All visitors are asked to use this when entering and leaving a ward.

Accessibility

If you require special access at Broomfield hospital or the Trust's services, please contact the Patient Advice Liaison Service, telephone 01245 514130 (9.00am to 4.00pm Monday to Friday) or out of hours please leave a message. We will call you back to make arrangements.

By Car

Car parking is available for patients and visitors', however it is in great demand and therefore we recommend that between the hours of 9am to 2 pm you leave in plenty of time as it may sometimes be difficult to park. Alternatively, if possible, please consider alternative ways of getting to the Trust.

Car Parking Charges:

Upto 15 mins	free
15 mins - 3 hours	£3.00
3 - 5 hours	£4.00
5 - 24 hours	£6.00

Weekly parking tickets are available at a reduced rate. Please visit the Cashiers Officer located by the Main Reception in the atrium to purchase a long-stay ticket. We operate a pay and display car park. Our car park ticket machines are cash only and do not give change. Please use the change machine by Cashiers Office located by the Main Reception in the atrium.



Acorn Stairlifts
Regain the freedom of your home

Regain the freedom of your home with an Acorn Stairlift

- Next day installation available
- 365-day local service and support
- Free survey and quotation

**CALL NOW ON FREEPHONE
0800 016 9066**
FOR YOUR FREE SURVEY AND QUOTATION



WaltersMedical
Specialist Critical Care

Walters Medical addresses everything it believes is important in a medical supply company; a dedicated range of quality products, at realistic prices, great customer service and a can do attitude.

Tel: 0845 6800 377
www.waltersmedical.co.uk

Weltech House, The Ridgeway, Welwyn Garden City, Herts AL7 2AA



Call 07809610032
www.confidentialcounsellingsservices.co.uk
confidentialcounsellingsservices@outlook.com

A Holistic Approach to Wellbeing

Confidential Counselling Services provides a wide range of affordable healthcare. We offer psychological and complementary therapies for children, young people and adults from highly qualified team. Confidential Counselling Services also provides Group and Individual Supervision for qualified therapists and students.

EMDR Reiki Massage Counselling Hypnosis Reflexology

This year's plans faltering?

Using a coach might be the answer...

Richard Pickering is a trained personal development coach based in the Chelmsford / Colchester area who can help you find the answer to what may be holding you back

Richard's approach is informal, impartial, non-judgemental, confidential...

COACHING 2BU
07917 044 063
coaching2bu.co.uk

Sallywags Chelmsford

We have been delivering quality childcare since 2007. We are a small family run setting, situated on Beaulieu park sports field. All our staff have relevant qualifications & all are first aid trained. Latest Ofsted inspection 2015 rated "Good"

We offer full day care from 7.30 - 6.30pm open 51 weeks of the year. Morning and afternoon sessions. Funded sessions for 2,3,4 yr old children.

FULL AND PART-TIME DAY CARE FOR CHILDREN FROM 3 MONTHS TO 5 YEARS

01245 468 857
kerry.sallywags@googlemail.com
www.sallywagsessex.co.uk

DLB AESTHETICS

Fully Qualified & GDC Registered Dental Nurse carrying out Facial Aesthetic Procedures in Surgery & Mobile. Dermal Fillers and Botulinum Toxin

Insured and Passed by UK Aesthetic Training London

For prices please contact me
Tel: 07921889628
Email: Demib_x@hotmail.com



H.E HILL + SON

1-3 THE STREET, HEYBRIDGE
CM9 4NB.

- FURNITURE
- CARPETS
- ELECTRICAL GOODS

01621 853 364

Best wishes to Hospital Radio and all staff, patients and volunteers from:

Petro Designs Limited

Unit 20, West Station Yard, Maldon

Tel: 01621 840055

Architectural Consultants & Chartered Building Surveyors

HOSPITAL INFORMATION

CONTINUED

Sat Nav Location:

Broomfield Hospital Postcode: CM1 7ET

By Bus

Please see below the buses and route numbers that provide a service to Broomfield Hospital. For more information about bus transport around Chelmsford and the surrounding areas please visit

www.firstgroup.com/ukbus/essex/journeyplanning

70/70X

70: COLCHESTER - CHELMSFORD

Via Marks Tey, Coggeshall, Braintree, Gt Leighs

70X: COLCHESTER - CHELMSFORD

Via Braintree

Service 70 provides direct links to Little Waltham, Braintree, Coggeshall, Marks Tey and Colchester. Operates up to every 30 minutes.

42/42A/542

42: HOWE STREET - BROOMFIELD HOSPITAL - GALLEYWOOD

Via Town Centre, Tile Kiln

42A: STANSTED AIRPORT - BROOMFIELD HOSPITAL - GALLEYWOOD

Via Great Dunmow, Town Centre, Tile Kiln

542: GREAT DUNMOW - BROOMFIELD HOSPITAL - CHELMSFORD

Services 42/42A link Galleywood, Tile Kiln, Chelmsford Town Centre, Broomfield Road,

Mid Essex Hospital Services
NHS Trust



Great Waltham, Dunmow and Stansted Airport every 15 minutes Monday to Saturday.

40

40: CHELMSFORD - GREAT BADDOW (BAE SYSTEMS)

Via Town Centre, Meadgate Estate, Readers Corner

Service 40 serves the Hospital every 30 minutes.

47

47: CHELMSFORD - BROOMFIELD HOSPITAL

Via Springfield Park, Chelmer Village, Sainsburys Store, North Springfield
Service 47 from Chelmer Village serves the Hospital every 30 minutes.

Chelmer Valley Park and Ride Mini Bus

Essex County Council and Mid Essex Hospitals Services NHS Trust are offering a community link service between Chelmer Valley Park and Ride and Broomfield Hospital in Chelmsford). Monday to Friday. Every 23 minutes between the two sites. First bus leaves at 6.37am from Chelmer Valley Park & Ride car park. Last bus leaves at 18.40pm from Broomfield Hospital

By Train

The hospital has excellent, frequent public transport links to the mainline railway station, with regular rail services to stations between London Liverpool Street and Ipswich. Services are provided by Greater Anglia train services.

P SMITH
PLUMBING & HEATING

- BOILER SERVICES
- BOILER BREAKDOWNS
- FULL INSTALLATIONS
- SYSTEM UPGRADES
- PART I ENERGY EFFICIENT
- UNDER FLOOR HEATING
- LANDLORD REPORTS

9 Redmayne Drive
Chelmsford CM2 9XF
www.psmithplumbingandheating.co.uk

07801 817443
01245 763632
smith-paul104@sky.com

 No 219311



SANDON SUNDAY MARKET
NOW OPEN

LAZYBONES MARKETS

AT SANDON PARK & RIDE - CM2 7RU
JCT 18, A12 & CLOSE TO JCT 28, M25

10AM - 4PM

A VARIETY OF STALLS, HOT FOOD,
ON-SITE TOILETS & PLenty OF PARKING
* VEHICLE HEIGHT RESTRICTION OF 2.2 METRES

FOR PITCH ENQUIRIES TEL:
07956 826730 07478 350176

www.lazybonesuk.co.uk

Thank you to all the Staff and best wishes to patients

G + G GALLO
ENTERPRISES LTD
DRINKS DISTRIBUTORS

Tel: 01376 343188
Web: www.gandggallo.com
Email: sales@gandggallo.com

430 Urban Hive, Avenue West, Skyline 120 Business Park,
Great Notley, Braintree, Essex CM77 7AA



LASER electrical

glad to be associated with Broomfield Hospital

- Design - Electrical Maintenance
- Commercial - Domestic - Industrial
- Data Networking - Emergency Lighting
- Fire Alarms - A.O.V Systems • T.V. Distribution Systems
- Audio / Video Door Entry Systems • Intruder Alarms

24 Hour Emergency Call Out
Inspection & Testing - Pat Testing

Tel: 01245 398380
www.laserelectrical.com

D&B SCAFFOLDING LIMITED

D&B Scaffolding offer a complete scaffolding service for commercial, industrial and domestic projects. It is a service that is competitively priced, fast, safe and reliable. If you are planning work that requires scaffolding then please contact us. We can visit your site and give you a competitive quote for your requirements.

D&B Scaffolding provide the best service to our customers through the experience and commitment of our staff.

Email: office@dbsscaffolding.co.uk
Tel: 01245 362683 • Fax: 01245 362798

- Montpelier House • Blasford Hill • Little Waltham •
- Chelmsford • Essex • CM3 3PG •



CTC CHELMSFORD CITY TILING

FOR ALL ASPECTS OF FLOOR & WALL TILING

CTC offers a tiling service working closely with our clients to achieve the perfect finish

Office 01245 351685 | Mobile 07970 943614
Email: chelmsfordtiling@gmail.com
Website: www.chelmsfordcitytiling.co.uk

Are you a parent facing challenges?

Is your son or daughter suffering with anxiety, mental health issues or experiencing other difficulties?

Do you constantly worry about her/him?

Would you like to be able to:

Communicate well with your son/daughter?

Manage your anxiety and other challenges? Keep positive?

You are VITAL for your loved one and it's ESSENTIAL for YOU to get support

Contact me for a free consultation to find out how I can help
Silvia Meredith Certified Coach and Mentor
Tel 07946 611467 silvia@silviameredith.com
www.silviameredith.com

Ground Control
Caring for our Environment

Kingfisher House, Radford Way, Billericay, Essex, CM12 0EQ

Ground Control is one of the UK's fastest growing, privately owned, external landscape solutions providers, always providing customers with what they need for less.

01277 650697
www.ground-control.co.uk



HOSPITAL INFORMATION

Mid Essex Hospital Services
NHS Trust



CONTINUED

For more information, visit
[www.abelliogreateranglia.co.uk/
travel-information/
station-information](http://www.abelliogreateranglia.co.uk/travel-information/station-information).

Finding Your Way at Broomfield Hospital

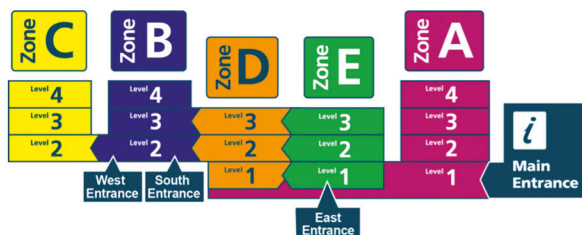
Broomfield Hospital is a large site with buildings reaching widely across the campus. In order to ensure our patients reach their destination quickly as possible and safely, a simple wayfinding system is in operation. The wayfinding system is based on ward/clinic names, zones and destination numbers.

On arrival to the hospital, if you do not know the destination number of the ward/clinic you are visiting, simply find it on the directory boards located at any entrance to the hospital. All wards and departments are listed alphabetically including their destination number.

Then, simply follow the signs to the correct zone and thereon to the correct destination number.

For example, Day Stay Unit is at Destination Number B448 which is located in Zone D, Level 4.

Cross section showing zones,
zone floors levels and entrances



Facilities at Broomfield Hospital

Broomfield Hospital offers a range of facilities from shops and restaurants to patient entertainment systems.

Cash Machines

Cash dispensers are available at the following locations

- **Zone A**, Level 1 (Atrium) - inside WH Smith (free of charge)
- **Zone B**, Level 2 (South Entrance) - opposite Reception desk (£1.85 charge applied)

Cashiers & Change Machine

The cashiers are located in the atrium, Zone A near the Main Reception desk. Cashiers can assist in providing change, dealing with enquiries regarding parking and travel costs and reimbursements.

A change machine is also provided at the Cashiers should you need to change notes into coins for car parking and vending machines.

JACKSON & KELLY STAINLESS STEEL CATERING FABRICATIONS

Are very pleased to support the
Staff and Volunteers at **Broomfield Hospital**

Tel: 01245 363731

Lynderswood Farm, Lynderswood Lane,
Braintree, Essex CM77 8JT

UCCM PEST CONTROL

- Standard Treatments Include
- Mice & Rats • Bed Bugs • Wasps • Fleas
 - False Widow Spiders • Carpet Beetles
- And much more, just ask!

Call Steve on
07476 150677

Dealing with Domestic, Agriculture and Commercial

All treatments by fully qualified technicians in all rodents and insects

SECBUILD LTD

BUILDING CONTRACTOR NHBC

- * FREE ESTIMATES ON *
- * NEW BUILDINGS * EXTENSIONS *
- * CONVERSIONS * ALTERATIONS *
- * INSURANCE AND GRANTWORK UNDERTAKEN *
- * BUILT TO QUALITY & ON TIME *

TEL/FAX: 01621 743627

MOBILE: 07860 201164

62B NIPSELLS CHASE, MAYLAND, CHELMSFORD, ESSEX CM3 6EJ
NHBC REGISTERED

MAKE YOUR CHILD'S DEVELOPMENT FUN! TRY RUGBYTOTS

Our dynamic weekly play sessions enable boys and girls aged 2-7 to develop their social and physical skills in a fun, positive environment. For more details, just call or email.

0345 313 0422

adrian@rugbytots.co.uk

rugbytots.co.uk
The world's favourite
rugby play programme



Have You Broken Your Denture?

Then Call **CDL** on 01245 257576

Or come to visit us at our friendly Laboratory

65-66 Victoria Road Chelmsford CM11PA

**We Provide Denture Repair with
Collection & Delivery Service**

Same Day Repair before 11.00!



DAWS Heath Timber Ltd

YOUR LOCAL SUPPLIER OF TIMBER, FENCING,
PLYWOOD, SKIRTING BOARDS, GARDEN PRODUCTS,
PLANED TIMBER, PLASTERBOARD & MUCH MORE.

VISIT US AT
200 DAWS HEATH ROAD, BENFLEET, ESSEX SS7 2TB

DELIVERY SERVICE AVAILABLE

**www.dawsheathtimber.co.uk
dawsheathtimber@yahoo.co.uk**

Tel: 01702 552895

Smile!

If you would like to advertise in the next
edition of this magazine please contact
our purchasing department for further details.

0800 083 5222

www.smilepublishing.com



HOSPITAL INFORMATION

Mid Essex Hospital Services
NHS Trust



CONTINUED

Level 3 - near Terling Ward (A305)
Level 4 - Maternity waiting area (A404)
- Neo Natal unit (A406)

Zone C

Level 2 - Lift Lobby

Zone E

Level 1 - Lift Lobby
Level 2 - Lift Lobby

Coffee Shops

Costa Coffee

Mid Atrium, adjacent to the entrance
to Zone E Minimum opening hours:

08:00 - 18:30 Monday to Friday

10:00 - 17:00 Saturday & Sunday

Closed 25th – 26th December and 1st
January

Fontanella Coffee Shop

Front of Atrium Minimum opening hours:

08:00 - 18:30 Monday to Friday

10:00 - 17:00 Saturday & Sunday

Closed 25th – 26th December and 1st
January

Roundhouse Coffee Shop

E121: St Andrew's OPD waiting area

08:30 - 15:00 Monday to Thursday

08:30 - 14:30 Friday

Closed Weekends & Bank Holidays

Shops & Café's (Newsagents and Food)

Friends at Broomfield Hospital Shop 1

South Entrance **09:00 - 18:00**

Monday to Friday

Closed Weekends & Bank Holidays

Friends at Broomfield Hospital Shop 2

End of Atrium, adjacent to A111

09:00 - 16:00 Monday to Friday

Closed Weekends & Bank Holidays

M&S Simply Food

Mid Atrium Minimum opening hours:

08:00 - 20:00 Monday to Friday

10:00 - 20:00 Saturday & Sunday

Closed 25th – 26th December and
1st January

WH Smith

Mid Atrium Minimum opening hours:

07:00 - 19:00 Monday to Friday

09:00 - 16:00 Saturday & Sunday

Closed 25th – 26th December and
1st January

Pudding Wood Café

Just off main Hospital Street near X-Ray
at Destination number (D140)

07:00 - 15:00 Monday to Friday

Vending Machines

Zone A - Level 1 -near Breast clinic (A104)

Zone A - Level 2 - A & E department
waiting room & Felsted Ward (A205)

Zone A - Level 3 - near Terling Ward (A305)



Manor Tree Services

Your local & family run tree services

John Foss
City & Guilds Qualified

Call today on
07702 317190
07548 371856
01621 778330

Alternatively email us
fossjohn@gmail.com

City & Guilds
NPTC
qualified

Free estimates, quotations & advice
All types of tree work undertaken
Tree planting & pruning
Hedge laying
Woodland management
Crown reduction & stump grinding
Landscaping & fencing services
£5m Public liability
Seasoned logs available for purchase
Free delivery of woodchip within 6 mile radius

2 Manor Road, Dengie, Essex, CM0 7UG



Family Run Italian Restaurant

01245 259990

www.ilpalazzo.co.uk

46 Duke Street, Chelmsford, Essex CM11JA

FORDS OF ALTHORNE

Essex based coach & bus hire

Tel: 01621 740326 Email: info@fordscoaches.co.uk

Our vehicles travel the whole of the United Kingdom and the continent for many different companies, groups, schools and private customers. We also operate our own extensive Day Excursion program and Theatre trips. We pride ourselves on a reputation built up over many years, during which many thousands of satisfied customers have travelled with us again and again. Recommendation is our reward.



Please help us
prevent infections
by using the hand
disinfectant provided
around the hospital

Thank you



NHS
Blood and Transplant

I have

Shared your organ donation decision yet?

Join the Register, share your decision, save lives

Visit **organdonation.nhs.uk**
or call **0300 123 23 23**

HOSPITAL INFORMATION

Mid Essex Hospital Services
NHS Trust



CONTINUED

Zone A - Level 4 - Maternity waiting area
(A404) & Neo-Natal unit (A406)

Zone C - Level 2 - Lift Lobby

Zone E - Level 1 - Lift Lobby

Zone E - Level 2 - Lift Lobby

Trolley Service

A trolley service operates (subject to volunteers' availability) on the wards selling sweets, drinks and newspapers to patients. The trolley service does not accept debit/credit cards.

Patient Entertainment (Hospedia)

Hospedia is a service available to Patients throughout the hospital, offering Free radio and a variety of TV Packages which include free outbound calls to 01,02 and 03 numbers for the duration of any package brought. Also included in the package are free games and internet access. Card machines are located around the hospital, as well as Hospedia Representatives visiting wards daily to assist with any problems or to

help purchase credit. They can also advise you on the best package for your stay. You can also pay by Debit or Credit card.

Hospedia staff are on site Monday - Friday 9 - 6.30pm and Saturdays 9 - 2pm.

For more information, please visit:

www.hospedia.co.uk

Post Box

There is a Royal Mail post box located outside M&S Simply Food in the Atrium, Zone A.

Public Payphones

Payphones are available for use at the following locations

- Zone A, Level 1 (Atrium) - beside Cashiers
- Zone B, Level 2 (South Entrance) - opposite lifts
- Zone D, Level 1 (Central Corridor) - opposite vending machines
- Zone E, Level 1 (East Entrance) - lift lobby



HISTORY OF BROOMFIELD HOSPITAL



The history of the NHS

We take the National Health Service for granted now, but there was a time that health care was a luxury not everyone could afford. Hospitals charged for their services and poor people often went without medical treatment, relying instead on dubious – and sometimes dangerous – home remedies, or on the charity of doctors who gave their services free to their poorest patients.

Older people who were no longer able to look after themselves also fared badly. Many ended their lives in the workhouse – a Victorian institution feared by everyone

– where paupers did unpaid work in return for food and shelter. Workhouses changed their names to Public Assistance Institutions in 1929, but their character and the stigma attached to them remained.

Throughout the 19th century philanthropists and social reformers tried to provide free medical care for the poor. One such man was William Marsden, a young surgeon, who in 1828 opened a dispensary for advice and medicines. His grandly named London General Institution for the Gratuitous Cure of Malignant Diseases (now called The Royal Free Hospital) would provide treatment free of charge to any destitute or sick person who asked for it.



Even with consultant medical staff giving their services free of charge and money from legacies, donations, subscriptions and fund-raising events, the hospital struggled to fulfil its vision. With overwhelming demand, and on the brink of bankruptcy, the Royal Free was forced to ask patients to pay whatever they could towards their treatment – just like every other voluntary hospital in the country.

The need for free health care was widely recognised, but it was impossible to achieve without the support or resources of the state.

The National Health Service became reality on 5 July 1948. It brought hospital services, family practitioner services (doctors, pharmacists, opticians and dentists) and community-based services into one organisation for the first time.

It was a momentous achievement but it was not easy. Food was still rationed, building materials were short, there was

an economic crisis and a shortage of fuel. The war had created a housing crisis – alongside post-war re-building of cities, and the designation of overspill areas, the New Towns Act (1946) created major new centres of population and all needed health services.

Within three years of its creation, the NHS, which had been conceived as free of direct charges for everyone, was forced to introduce some modest fees. Prescription charges of one shilling (5p), were introduced in 1952. A flat rate of £1 for ordinary dental treatment was brought in at the same time.

By the end of the 20th century, the NHS with its workforce of over one million people and a budget of around £42 billion is a sophisticated and modern organisation with all the advantages of state of the art technology. Yet the fundamental questions and tensions that emerged in the early days of the NHS have challenged its senior management and successive Governments ever since.

Chelmsford & Essex Hospital, Chelmsford

Chelmsford & Essex Hospital was opened in 1883 and in its first year had just 53 patients. The reputation of the hospital, in New London Road, Chelmsford,

Proud to *support*

Mobile Automotive Services Ltd
Ken Greenaway
07860 515355

Kerry Motor Engineers
Cambelt Specialist, Servicing,
Clutches and Gearboxes
Tel: 01245 500111 • Mob: 07885 678891

Beckwith & Son
Engineering Ltd
Sheet Metal Components & Storage Equipment
Tel: 01245 224775 Fax: 01245 224364
www.beckwithengineering.co.uk

CHELMER LOFT CONVERSIONS
TEL: 07837 845609
*Hooks and Cheese, Hatfield Peverel,
Chelmsford CM3 2DW*

FAHY CONSTRUCTION
Tel: 01245 299 311 / 07801 823622
Email: fahyconstruction@btconnect.com
Web: www.fahyconstruction.com

Javalin Network Services Ltd
5 Grafton Place, Chelmsford CM2 6TG
Tel: 01245 463377
www.javalin.co.uk

KNIGHT MEATS LTD
are happy to support
The Volunteers at
Broomfield Hospital

Christy Cooling Services
Air Conditioning & Refrigeration
Temple Wood Estate, Stock Road,
Chelmsford, Essex CM2 8LP
TEL: 01277 841500

Best wishes to all staff, patients and volunteers from

GRAY & SONS
Rignals Lane, Galleywood, Chelmsford, Essex CM2 8RE
Tel: 01245 475181
www.grayandsons.co.uk

Best wishes to all staff, patients & volunteers from all at

**BELLAMY SURVEYING &
CONSULTANCY SERVICES LTD**
For all surveying & project management
Tel: 01245 478333 Mob: 07734 686776
Email: kevin@thebellamygroup.co.uk

Best Wishes to Staff, Patients and Volunteers from
**Wickham Engineering Hose
& Hydraulics Ltd**
24hr Hydraulic Hose Breakdown Specialists
Tel: 01621 868848
www.wickhamengineeringltd.co.uk

NICHOLAS WILLIAM LAMBORN
Mortgage Brokerage and Consultancy
We are delighted to support the volunteers
at Broomfield Hospital
nick@nicklamborn.freereserve.co.uk

THE DUCKLING NURSERY
Tel: 07771 645270

Writtle Infants School, Lodge Road, Chelmsford CM1 3HZ

Best wishes to all staff, patients and volunteers
Jovic Plant
01245 224211
Mayes Lane, Sandon, Chelmsford CM2 7RP

Best wishes to staff, patients and volunteers from
BEAVER LODGE PRINTS LTD
For all your picture framing needs
01787 272591 • www.beaverlodgeprints.co.uk
Unit 25 Fifth Avenue, Bluebridge Ind Estate, Halstead, Essex CO9 2SZ

Best wishes to all staff, patients & volunteers from
CHICKS CATERING SERVICES
Professional catering for all occasions
Weddings - Dinners - Buffet
Telephone **Louise Collinson** on **01245 265570**

Best wishes to all staff, patients & volunteers from
THURROCK FORK LIFT TRUCKS LIMITED
Telephone: 01245 323256
*43 King Edwards Road, South Woodham Ferrers,
Chelmsford, Essex CM3 5PQ*

Borehams General Farm
Giant Boot Sale
Every Sunday & Bank Holiday Mondays
Sellers arrive 6am to 10am
Tel: 01371 876006 or 07779 948946

A J F
Landscape Gardens
5 Howard Close, Braintree, Essex CM7 3DT
Tel: 01376 528780 MOB: 07770 873374

D.S.ENGINEERING
(Witham) LTD
CNC TURNING & MILLING
SHEET METAL FABRICATION
Tel 01376 510294 Fax 01376 510183 Email info@dse-ltd.co.uk
7 Crittall Road, Witham, Essex CM8 3DR

Perspective Landscapes
are proud to support Broomfield hospital

Best wishes to all patients, staff and visitors
St Mary w St Leonards Church
Broomfield
01245 440318 • www.stmarybroomfield.org

GEOFFREYS TAXIS
Tel: 01621 855451
Mob: 07889 336563
Email: geoffrey.dell@outlook.com

Best wishes to all staff, patients and volunteers
FREEMIX CONCRETE
Tel: 0845 894 32 36
Halls Farm, High Cross Lane, Little Canfield, Essex CM6 1TQ
www.freemixconcrete.co.uk
Email: **sales@freemixconcrete.co.uk**

Thank you to all the advertisers

65

HISTORY OF BROOMFIELD HOSPITAL

CONTINUED

depended upon the skill of its physicians and surgeons. Throughout the hospital's early years its entire medical work was carried out by Chelmsford General Practitioners, working on an entirely voluntary basis.

By 1903 the number of patients had gone up to 376 and in 1926 the first resident house surgeon was appointed.

In 1936 one of the existing general practitioners become the first consultant on the hospital staff and gradually a few others abandoned general practice to devote all their time to specialist work.



Broomfield Hospital, Chelmsford

Broomfield Hospital, built as a sanatorium for TB patients, was one of the last of its kind to be completed before the outbreak of the Second World War.

Building work began in June 1937 and after delays caused by wartime difficulties, the hospital's first patients were admitted in 1940. There were 312 male patients, bed occupancy was anything from 6 months to about four years per patient.

The hospital was soon working to full capacity and was the only centre for thoracic surgery for pulmonary tuberculosis in Essex. Towards the end of the war 50 per cent of patients were ex-service men.

As TB declined, the hospital developed. The North East Metropolitan Regional Hospital Board took over when the National Health Service was founded in 1948. Previously all patients were male, until in 1959 saw the first intake of 50 ladies and six newborn babies with their mothers. By the 1960s Broomfield had become a general hospital with just one chest ward.

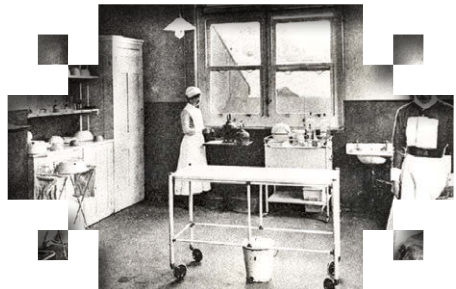
Highlights from the hospital's history

- 1940** In May the hospital is opened for the treatment of tuberculosis patients.
- 1947** The hospital gets its first bus.
- 1948** The hospital becomes the responsibility of the North East Metropolitan Regional Hospital Board as the National Health Service is launched.
- 1950** The Mass X ray unit was started and covered an area of 1,000 square miles. It closed in 1972.

- 1953** The first student nurse arrives from the Commonwealth (Nigeria).
- 1957** The Hospital League of Friends was founded and is still giving valuable support to the hospital today.
- 1959** The first women and their babies are admitted to the hospital (previously only male patients).
- 1960** Broomfield became a General Hospital and training for general nursing was established.
- 1963** The Right Hon Enoch Powell officially opened a new crèche as an aid to the recruitment of nurses.
- 1970** Plans are revealed for the first stage of development, costing £3 million, for new district general services.
- 1973** Rising costs hold up the development plans.
- 1981** Work begins at last on the development and the cost has risen to £13 million. Dame Elizabeth Coker, Chairman of the health authority cuts the first turf to launch the scheme.
- 1983** The CAT scanner is opened by Princess Anne after years of fund raising – 28 July.
- 1985** Development work is completed giving Broomfield modern facilities at last.
- 1986** A proposal emerges for a cancer centre at Broomfield Hospital but the plans do not come to fruition, despite a major campaign by local

people. But heart patients at the hospital benefit from the latest equipment thanks to the efforts of local fund raisers.

- 1987** A boost for hospital services as the Princess Royal opens a new ward block and work starts on the upgrading of the east wing of the hospital.
- 1988** The hospital's west wing is demolished and the former concert hall at the hospital is turned into the new Medical Academic unit.
- 1990** The go ahead is given for the penultimate phase of the development at the hospital, including 196 acute beds, 96 beds and a 30 place day hospital for elderly patients and four operating theatres.
- 1991** Building works begin on the new Medical Academic Library.
- 1992** Mid Essex Hospital Services NHS Trust is formed and full Trust status is achieved on 1 April.



Proud to *support*

**Best wishes to staff, patients
and volunteers,
from Anthony Brooks
Painter
Mob: 07799473135**

Best wishes to all staff, patients and volunteers
BDR Micro Instruments Ltd
01245 476777
Church Street, Great Baddow, Chelmsford, Essex CM2 7HY

Best wishes from
CCS WINDSCREENS LTD
Tel: **01245 490590**
www.ccswindcreens.co.uk

Best wishes to all staff, patients and volunteers from
The Lion Inn
01245 394900
www.lioninnhotel.co.uk
Main Road, Boreham, Essex CM3 3JA

FLAGFINDER COACHES
Excellence in Passenger Transport
01376 320 501
www.flagfinders.com

IFDS GROUP
*International Financial Data Services are
one of the largest employers in Essex.*
To **join us** please visit **www.careersatifds.com**

Best wishes to all Staff, Patients & Volunteers from
Eddie Driscoll
DRISCOLL WINDOW CLEANING
Tel: **01245 360 540**

SPL
Retail Displays
2 Crittall Drive, Braintree, Essex, CM7 2RT
Call: 01376 550552
Email: david@storeproducts.co.uk

Best wishes to all staff, patients & volunteers from all at
Forwardsread Ltd
2 Ongar Road, Trading Estate, Dunmow, Essex CM6 1EU
07803 989 378

**CHELMSFORD
ALEXANDER STUDIO**
Moulsham Mill, Parkway, Chelmsford CM2 7PX
07799 232314

STEVE COUSINS

Tel: 07770 890126

2 Dartmouth Road, Chelmsford, Essex CM1 6LT

C Davies and Sons

Groundwork Contractors

*The Barn, Woolmongers Lane,
Blackmore, Essex CM4 0JX*

www.cdaviespaving.co.uk

Best wishes to all patients and staff from all at

Craft Windows Ltd

*Meadowcroft Nursery, Woodham Road,
Battlesbridge, Essex SS11 7QU*

01245 322742 • www.craftwindowsltd.co.uk

SUPREME INSTALLATIONS

*Unit 1 New Farm, The Street, Stow Maries,
Chelmsford CM3 6RS*

Telephone 01621 856650

www.supreme-installations.co.uk

Wishing Patients A Speedy Recovery

City Diner

Breakfasts, Lunches & Dinners

6 Exchange Way, Chelmsford Essex CM1 1XB

01245 266178

Best Wishes to all Staff, Patients and Volunteers from

JOHNS DRY CLEANERS & TAILORS

Tel: 01245 269001

www.johnsdrycleaners.co.uk

Best wishes from

Boucherne

Private Residence for the Elderly. Visitors always welcome.

Tel: 01621 855429 • Email: boucherne@btinternet.com

www.boucherne.co.uk

SNOOKS LIFTING AND ENGINEERING LTD

Crane Hire and Contract Lifting Specialist

20 Green Lane, Burnham on Crouch, Essex, CM0 8PX

01621 770 590 • www.snookslifting.co.uk

Baby Sensory

*Nuffield Health and Fitness, Riverside Retail Park,
Essex CM1 1AN*

07854 882 524

www.babysensory.com

KNIGHT'S TAXIS

1A Guithavon Street, Witham

Tel: 01376 518383

Credit/debit cards accepted

Best Wishes to Patients and Visitors from

CHARMS

The Essex Therapy Centre

www.charmshbottherapycentre.btck.co.uk

therapy@charms.fsnet.co.uk

Best wishes to all staff, patients and volunteers from

Arvon Drain Cleaning

Local family company, competitive fixed rates

WWW.ARVONDRAINS.COM

01245 249499

NIGEL BRAND BUILDERS LTD

FOR ALL YOUR BUILDING NEEDS

BEST WISHES TO EVERYONE AT

BROOMFIELD & ST PETER'S

01376 552375 / 07714 695295

ACE CONTRACTS

*Unit 5/6, East Hanningfield Industrail Estate,
Chelmsford, Essex CM3 8AB*

Tel: 01245 400653

Thank you to all the advertisers

G. Collins & Sons. As a small local company and part of the community ourselves we try to support other local businesses and find that we can provide a better service for doing so. Whether you are looking for a simple funeral, a more elaborate or even a traditional service we can advise you through the whole process from the funeral to a lasting memorial and will take care of all the arrangements for you. For more information please see page **14**



Essex Celebrant. Glenn Mayes - Independent Celebrant and Professional Toastmaster. All venues through East Anglia, Cambridgeshire, Hertfordshire and beyond, with many being familiar. Baby namings to renewal of vows; funerals and memorials to civil ceremonies and corporate dinners. Your ceremony your way. Guidance and advice available whether religious or non religious. For more information please see page **16**



Stressed? Anxious? Depressed? We listen, assess and offer individually tailored treatment focusing on improving your well-being and social functioning. At **Living Mind**, we provide Reflexology, Mindfulness, Acupuncture. We also offer Psychiatric Assessments and Treatments for Emotional difficulties in Adults and Management advice on Dementia. Contact us at 07753430829 www.livingmind.co.uk or please see page **38**



At **SKIN DEEP MALDON** we provide bespoke holistic therapies tailored to the individual's needs. Many are steeped in history, some dating back to Ancient Egypt; your well-being is at our core. We offer Reflexology, Indian Head Massage, Hot Stone Massage and Body Massage. SKIN DEEP MALDON **"Where Life Is Not Stressful"**. For more information please see **Inside Front Cover**



Kare Plus is the UK's most established multi-service healthcare franchise. Hosting its first ever Annual Conference and Award Ceremony recently, local franchise Kare Plus Chelmsford cleaned up, winning three awards on the evening. The Kare Plus network is now looking forward to another strong 2017, with further growth, additional service offerings and more records set to be broken. For more information please see pages **10 & 24**



TMC Ltd is one of the most established transformer, distribution & site electrical equipment manufacturers in the UK, with over 35 years' experience within the industry. Please contact our helpful sales team with your requirements. For more information please contact us on: Tel: 01621 843322 | Email: sales@tmctransformers.co.uk Web: www.tmctransformers.co.uk or please see page **16**



Yourstyle Services Ltd provides a bespoke home help and personal assistant service to help you manage your home and routines. We set high standards and our bench mark is 'would we be happy for this service to be provided to our family member'. All staff are trained and police checked. See our advertisement on page **42**



Alder Tree Services is your local tree surgery firm offering top-quality tree services for domestic and commercial clients in and around Essex, including Chelmsford, Bishops Stortford, Epping, Brentwood, Braintree and Dunmow. As qualified tree surgeons, we provide a broad range of tree services to help you care for your trees and the grounds of your property. Get in touch today 01245 901 005 or please see page **30**



HISTORY OF BROOMFIELD HOSPITAL

Mid Essex Hospital Services
NHS Trust



CONTINUED

- 1994** Frank Bruno MBE opened the new screening room and mamographic facilities on 13 July.
- 1994** Broomfield Dialysis Centre is officially opened on 3 November.
- 1995** The final go-ahead has been given for the development costing over £25 million to increase clinical space at Broomfield by more than 50%.
- 1996** 18 October sees Prime Minister John Major, undertaking the Topping Out Ceremony.
- 1997** Broomfield celebrates its 60th Anniversary.
- 1998** Building work begins on new Diabetes Centre thanks to the efforts of local fundraisers.
- 1998** Official opening of the East Wing by the Trust's chairman, Sir Jeffery Bowman, former Nurse Tutor Margaret Craig, and former consultant anaesthetist Dr David Walmsley.
- 1998** 3 November is the officially opening of the new Diabetic Centre, Thomas Willett House, by Stuart Rawlins editor of the Essex Chronicle.
- 1999** The Medical Assessment Unit opened on 16 December by Joan Beard, chairman of Essex Council.
- 2000** April Broomfield Hospital takes control of the renal unit from the Royal London Hospital.
- 2000** May sees the 100th edition of the trust's staff magazine.



Sand Dunes enabling through care. With over 30 years' experience of providing independent living accommodation, your future is in safe hands at Sand Dunes. All-inclusive charge with no hidden extras, laundry & cleaning service included, fully furnished rooms, communal facilities and social events, Access to support if require & good accommodation and three hot meals a day. For more information please see page 40



The '**Rose**' business is under the ownership of Ben Johnson, who was brought up in Great Waltham. At the 'Rose' we take pride in being a genuinely independent local pub. We offer a warm, friendly welcome, traditional ales including the local 'Bishop Nick' beers, a real log fire (in the winter!) and a varied menu with traditional country products, fresh seafood and Italian specials...For more information please see page 42

The Rose & Crown

MI Heating & Plumbing. With over 20 years experience providing a reliable, trustworthy service in Chelmsford and the surrounding areas, our Gas Safe Registered engineers can offer you: new boiler installations, full central heating systems, sealed systems, kitchen and bathroom installations, underfloor, garden taps. Call us on 07966 193159 / 01992 610863 or for more information please see page 48



At **Skin Sense GP Clinic** we understand that cosmetic treatments are as much about helping you achieve greater self-confidence as about beauty or looking younger. For more information please see page 48



Swan Care Home is a twenty bed residential care home for the elderly located in Tillingham. Facilities & Services: Elderly/Dementia care for over 65 years • Permanent and respite care offered • Weekly GP visits • Real time care technology used with access via a relatives gateway • Residents outings and events organised • Visiting chiropodist and hairdresser • Access to well-being facilities • Warm friendly staff team. Tel: 01621 779171 or see page 32



The benefits of baby massage at **Basking Babies** are wide ranging and impressive. The benefits are also backed up by significant research. Learn how to massage your baby in a relaxed and friendly environment to reap these benefits for you and your baby. Our baby massage classes are fun, relaxed and informative and provide you with tools to be able to confidently massage your baby at home. For more information please see page 52



DISCLAIMER

This publication was produced by Smile Publishing, (Company No. 03709145) at no cost to Friends at Broomfield Hospital and Mid Essex Hospital Services NHS Trust. Production costs were met in full by the advertising the publication contains. Friends at Broomfield Hospital and Mid Essex Hospital Services NHS Trust and Smile Publishing Ltd do not make any recommendations as to the fitness of the advertisers appearing in this publication to carry out their services and no recommendations should be deemed to have been made.

Artwork and/or plates originated for use in this publication remain the property of Smile Publishing Ltd and must not be reproduced without the permission of the publishers.

Smile Publishing Ltd, Holly House, 220-224 New London Road,
Chelmsford, Essex CM2 9AE.
Tel: 0800 083 5222
© Smile! 2017 Issue 9


COMMUNITY ACTION

Mid Essex Hospital Services
NHS Trust



Age Concern Information Line.....	0800 00 99 66
Child Death Helpline.....	0800 282986
ChildLine.....	0800 11 11
Consumer Credit Counselling Service.....	0800 138 1111
Cruse Bereavement Care.....	0870 167 1677
DIAL U.K.....	01302 310123
Disabled Living Foundation Helpline.....	0845 130 9177
Drinkline.....	0800 917 8282
GamCare (for gamblers and those affected by problem gambling).....	0845 6000 133
Gingerbread Advice Line for Lone Parents.....	0800 018 4318
National Council for One Parent Families Lone Parent Helpline.....	0800 018 5026
National Debtline.....	0808 808 4000
National Drugs Helpline.....	0800 77 66 00
National Missing Persons Helpline.....	0500 700700
NHS Direct.....	0845 46 47
NSPCC Child Protection.....	0808 800 5000
Parentline Plus (practical help & information for parenting).....	0808 800 2222
Refuge Domestic Violence Helpline.....	0808 2000247
Relate.....	0845 4561310
Release (drugs and legal advice for users, families & friends).....	0207 7299904
Salvation Army Family Tracing Service.....	020 7367 4747
Samaritans.....	08457 90 90 90
Shelterline (help with housing problems).....	0808 800 4444
Victim Supportline.....	0845 30 30 900





Cherry Wood Grange

Care Home

Exceptional Care, No Exceptions

*High quality residential,
nursing and dementia care.*


Cherry Wood Grange is a beautiful new care home opening in Autumn 2017 in the heart of Chelmsford city centre.



Our new home will combine excellent facilities with exceptional care provided by a professional and compassionate team, focused on enhancing well being and quality of life.

For more information please call us on: **01245 918 212** or email us: CherryWoodGM@carebase.org.uk



 Cherry Wood Grange Care Home,
Writtle Road, Chelmsford, Essex. CM2 0FZ

 cherrywoodgrangecarehome.co.uk

 /CherryWoodGrange  @CherryWGrange